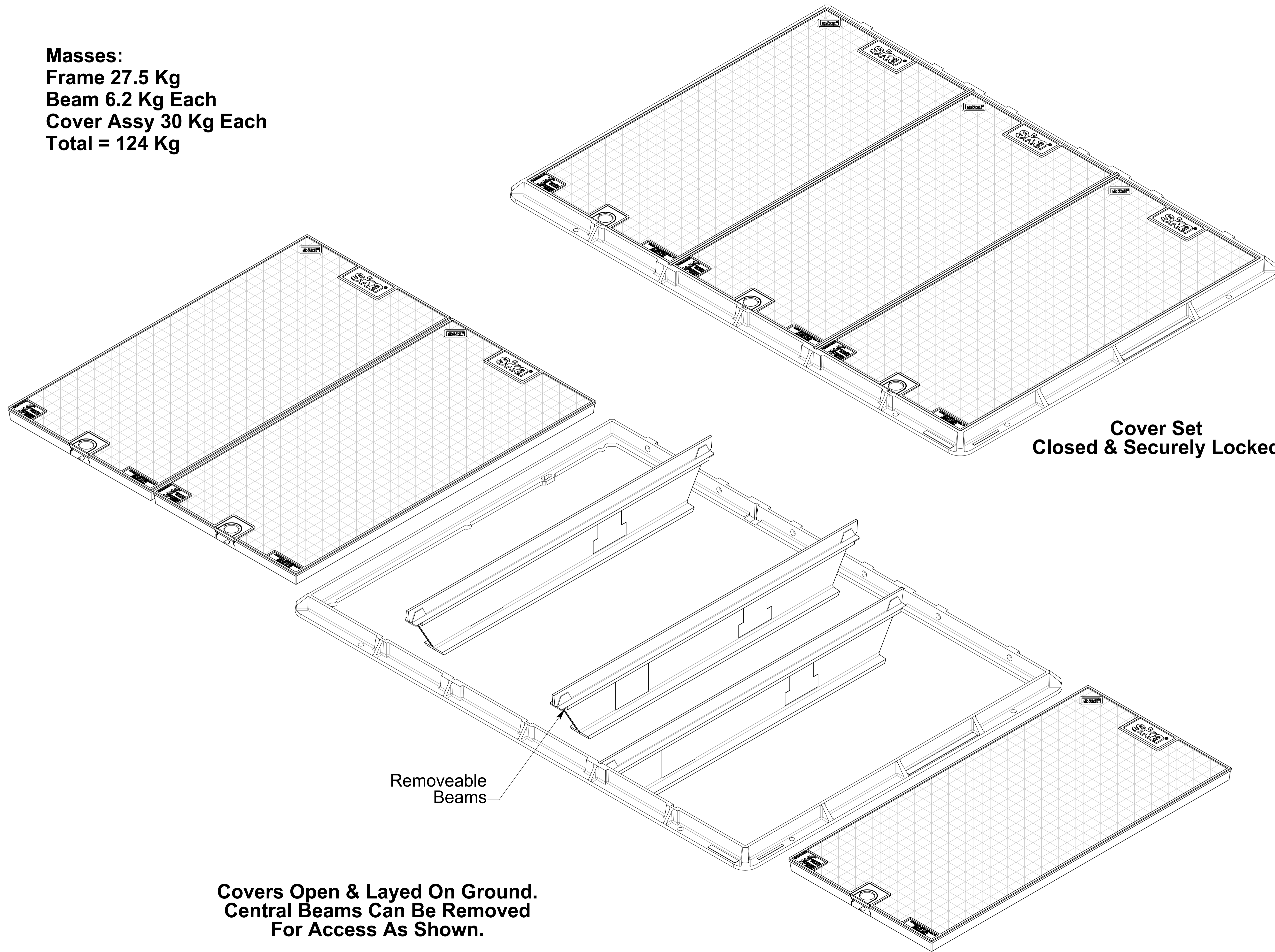


**Masses:**  
**Frame 27.5 Kg**  
**Beam 6.2 Kg Each**  
**Cover Assy 30 Kg Each**  
**Total = 124 Kg**



**Cover Set  
 Closed & Securely Locked**

Removeable  
 Beams

**Covers Open & Layed On Ground.  
 Central Beams Can Be Removed  
 For Access As Shown.**

**Refer To Sika Installation Guide**

Issue:	Issued By:	Or No:	Appvd By:	Date:
A	GS			15-07-02
Released for Information Released for Catalogue				
B	HH			01-03-03
Title Change				
C	db			22-06-22
Product Code Updated				

CLIENT

PROJECT:  
**Aluminium Security  
 Access Cover Set  
 1200 x 1800**

**To Class B080 kN Loads  
 To AS 3996 : 2006**

TITLE:  
**Lock Block Cover Set  
 1200 x 1800**



PO Box 58-491, Greenmount  
 Auckland, New Zealand.  
 Phone: +64 09 274 5929  
 Fax: +64 09 273 9509  
 Email: info@sikatech.co.nz  
 Website: www.sikatech.co.nz

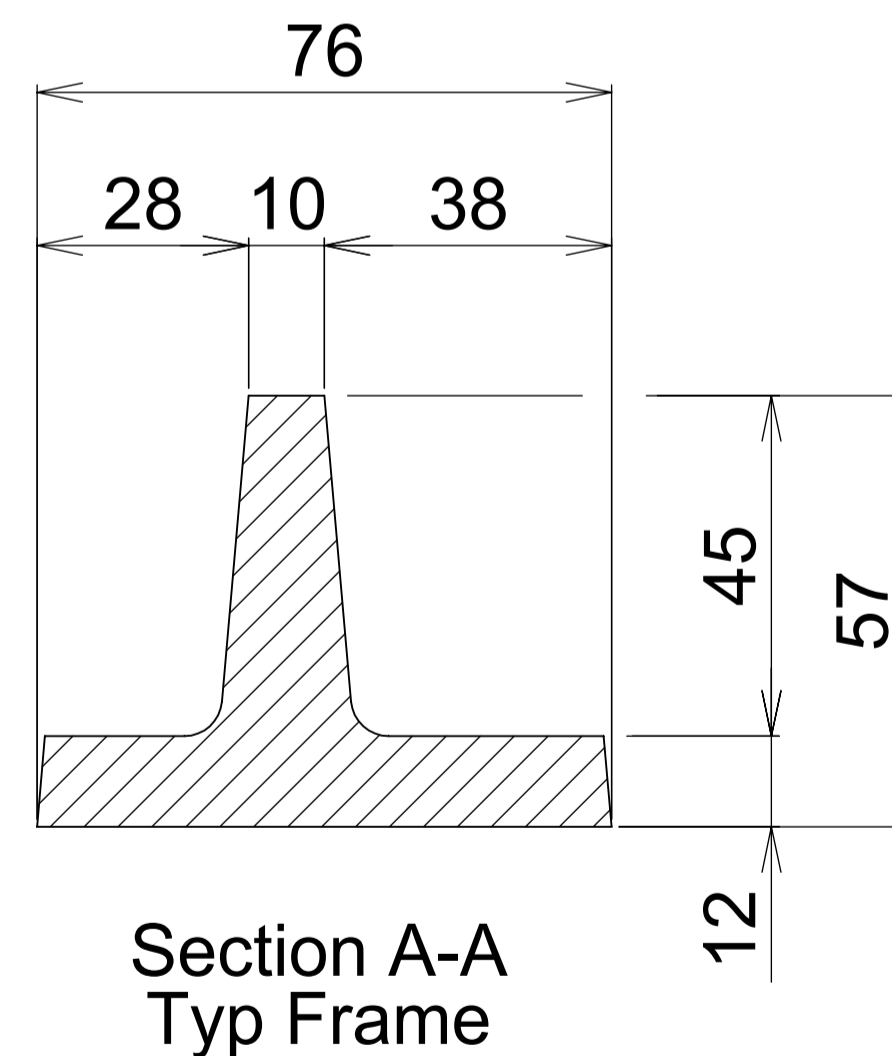
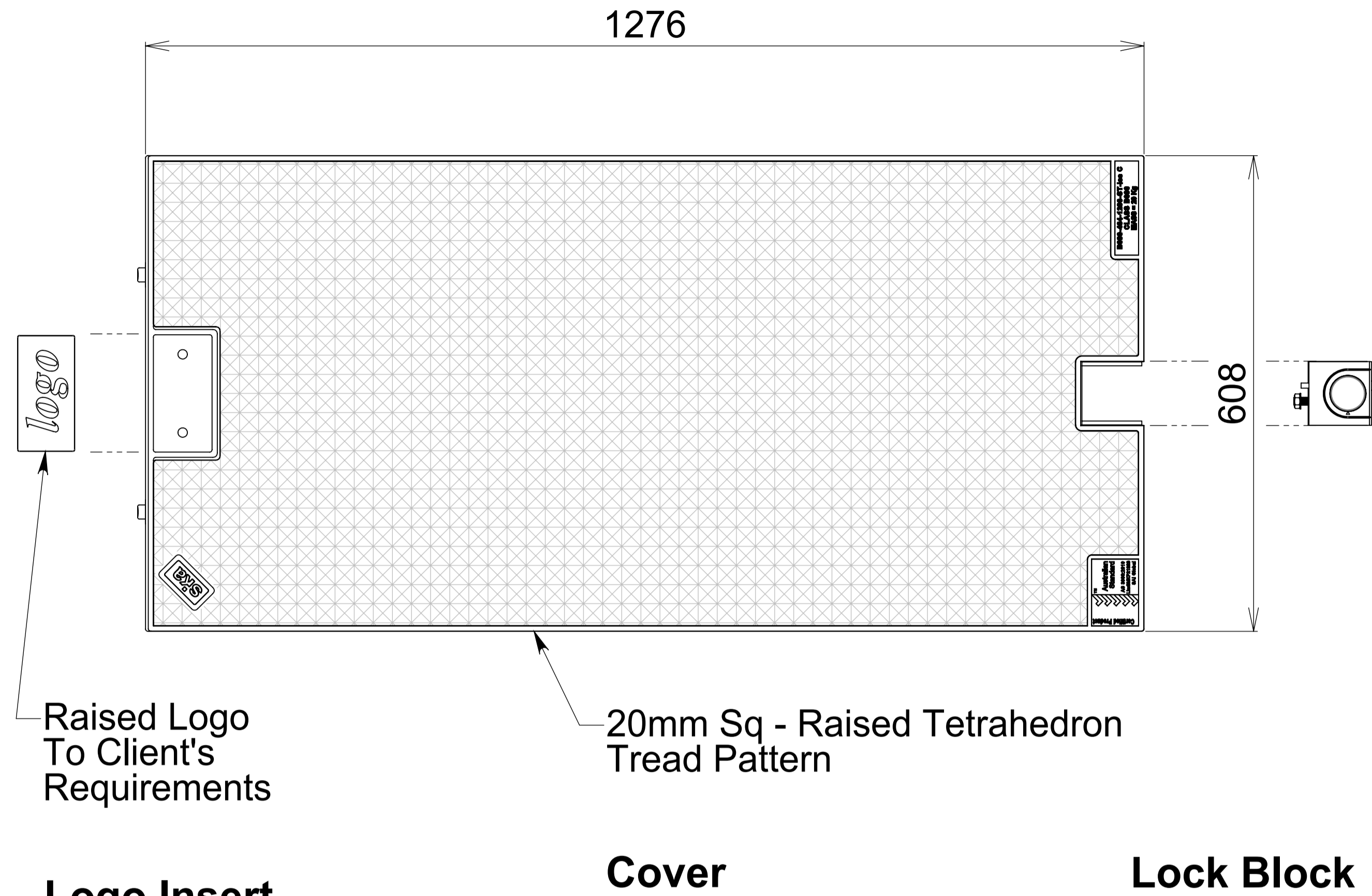
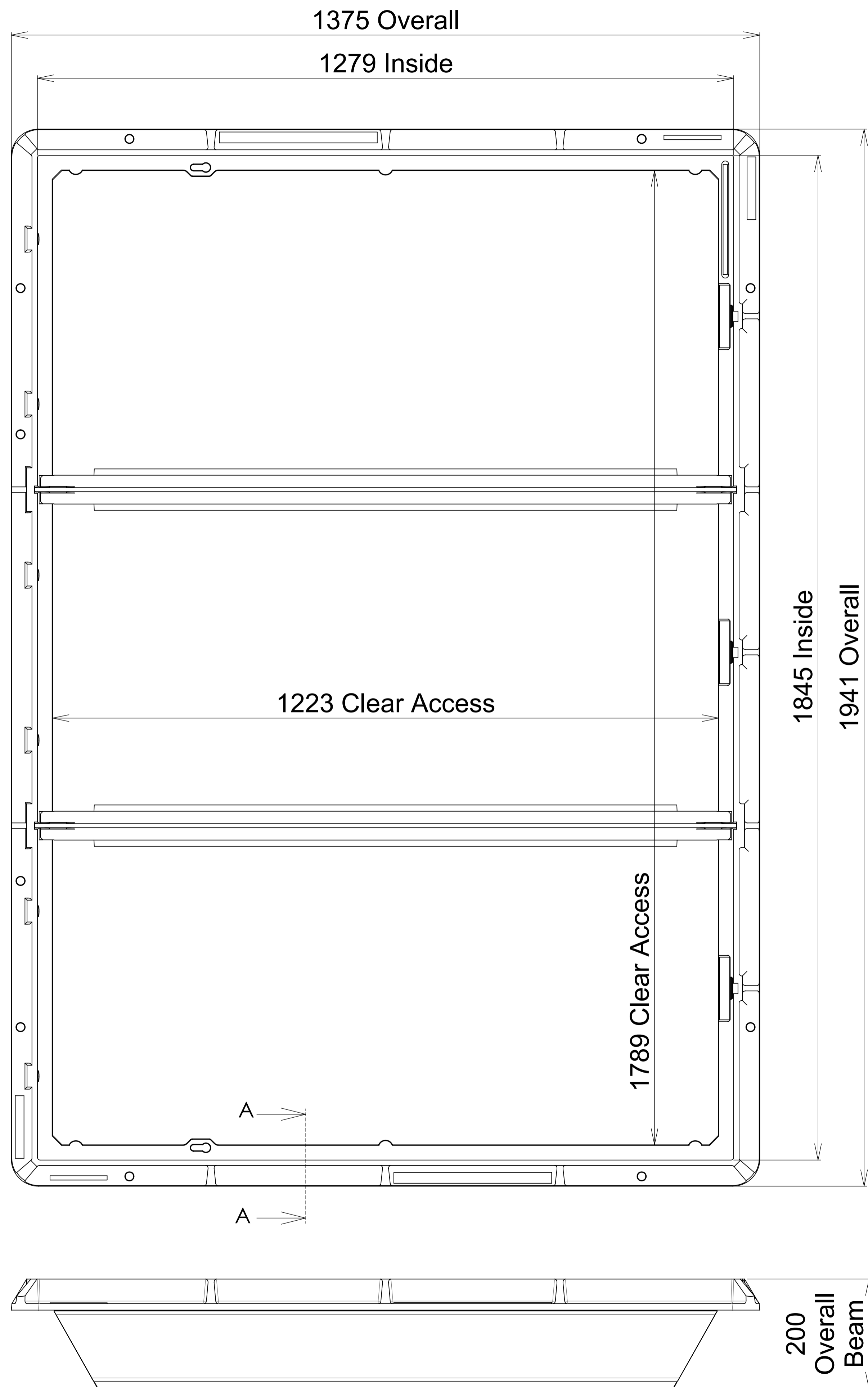
COPYRIGHT RESERVED ©

THIS INFORMATION IS HIGHLY CONFIDENTIAL  
 & IS THE EXCLUSIVE PROPERTY OF  
 SIKA TECHNOLOGY LIMITED.

Unless Specified:  
 All Dimensions In Millimeters  
 Drawn to AS 1100

Drawn By:	NL	Date:	03-10-01
Engineer:	GS	Date:	03-10-01
Checked By:		Date:	
Approved By:		Date:	
Drg Size:	A1	Sht:	1
SCALE At A1:	DNS	Of:	3
Drg No:	B080-403-1218-ST-A00		

Iss:  
**C**



**Masses:**  
**Frame 27.5 Kg**  
**Beam 6.2 Kg Each**  
**Cover Assy 30 Kg Each**

**Refer To Sika Installation Guide**

Issue:	Issued By:	Or No:	Appvd By:	Date:
A	GS			15-07-02
Released for Information Released for Catalogue				
B	HH			01-03-03
Title Change				
C	db			22-06-22
Product Code Updated				

CLIENT

PROJECT:  
**Aluminium Security  
 Access Cover Set  
 1200 x 1800**

**To Class B080 kN Loads  
 To AS 3996 : 2006**

TITLE:  
**Lock Block Cover Set  
 1200 x 1800**



PO Box 58-491, Greenmount  
 Auckland, New Zealand.  
 Phone: +64 09 274 5929  
 Fax: +64 09 273 9509  
 Email: info@sikatech.co.nz  
 Website: www.sikatech.co.nz

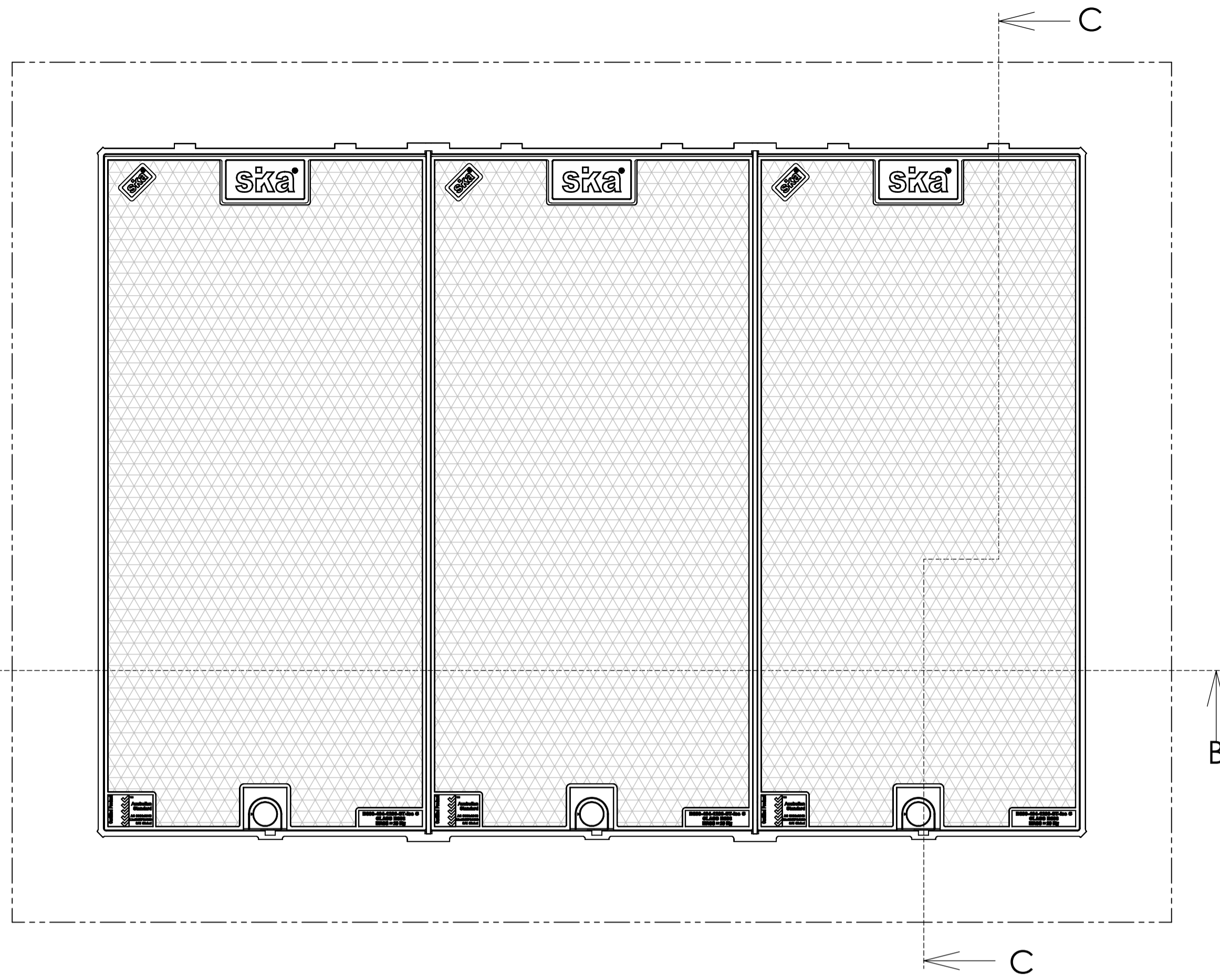
COPYRIGHT RESERVED ©

THIS INFORMATION IS HIGHLY CONFIDENTIAL  
 & IS THE EXCLUSIVE PROPERTY OF  
 SIKA TECHNOLOGY LIMITED.

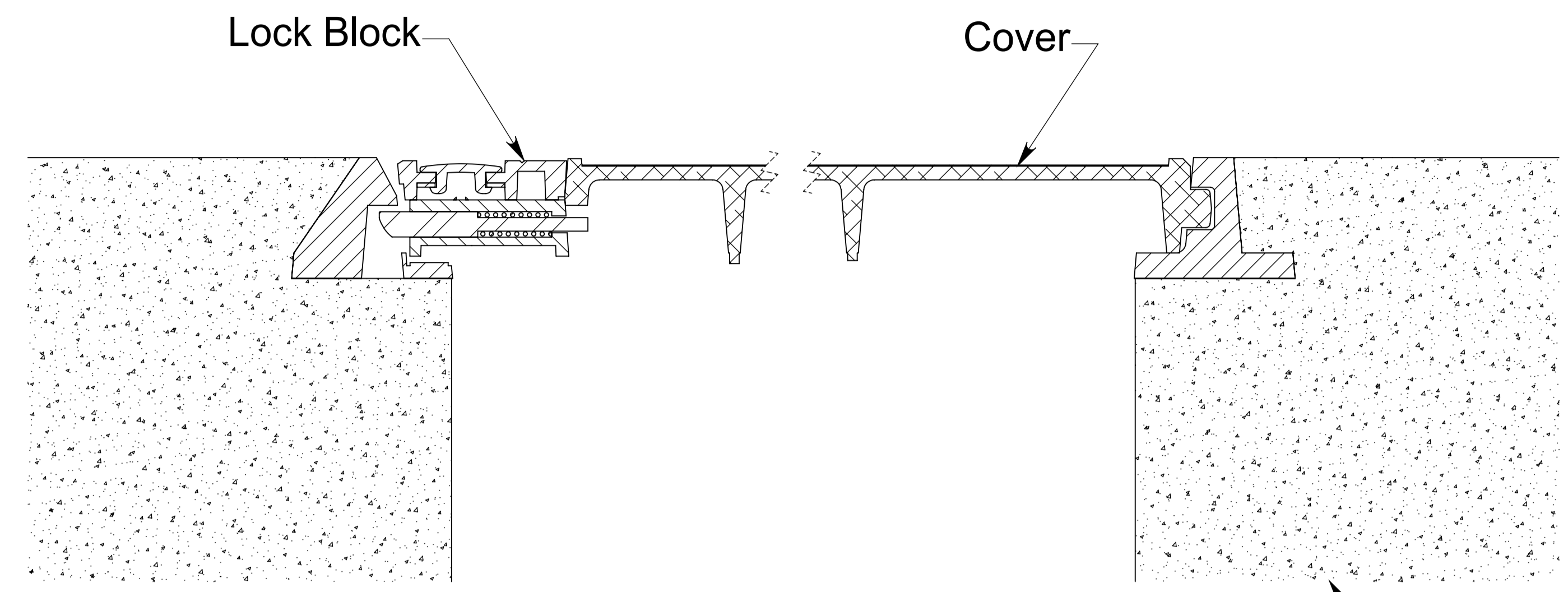
Unless Specified:  
 All Dimensions In Millimeters  
 Drawn to AS 1100

Drawn By:	NL	Date:	03-10-01
Engineer:	GS	Date:	03-10-01
Checked By:		Date:	
Approved By:		Date:	
Drg Size:	A1	Sht:	2
SCALE At A1:	DNS	Of:	3
Drg No:	B080-403-1218-ST-A00		

Iss:  
C

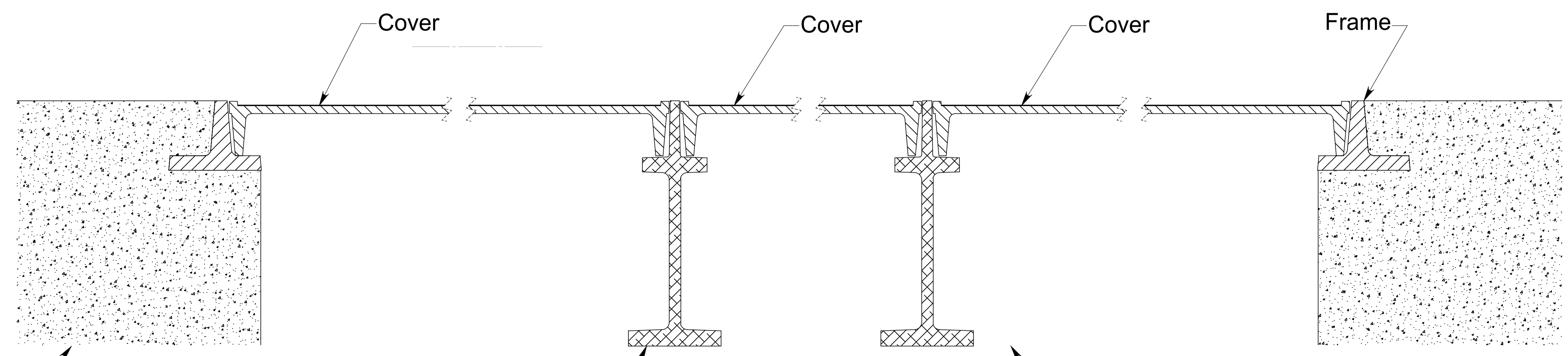


**Cover Set In Ground  
Set In Concrete Nib**



**Typical Installation Section C-C**

Frame Set In 200 x 200  
Minimum Concrete Nib,  
On All Four Sides



**Typical Installation Section B-B**

Frame Set In 200 x 200  
Minimum Concrete Nib,  
On All Four Sides

**Refer To Sika Installation Guide**

Issue:	Issued By:	Or No:	Appvd By:	Date:
A	GS			15-07-02
Released for Information Released for Catalogue				
B	HH			01-03-03
Title Change				
C	db			22-06-22
Product Code Updated				

CLIENT

PROJECT:  
**Aluminium Security  
Access Cover Set  
1200 x 1800**  
  
**To Class B080 kN Loads  
To AS 3996 : 2006**

TITLE:  
**Lock Block Cover Set  
1200 x 1800**



PO Box 58-491, Greenmount  
Auckland, New Zealand.  
Phone: +64 09 274 5929  
Fax: +64 09 273 9509  
Email: info@sikatech.co.nz  
Website: www.sikatech.co.nz  
COPYRIGHT RESERVED ©

THIS INFORMATION IS HIGHLY CONFIDENTIAL  
& IS THE EXCLUSIVE PROPERTY OF  
SIKA TECHNOLOGY LIMITED.

Unless Specified:  
All Dimensions In Millimeters  
Drawn to AS 1100

Drawn By:	NL	Date:	03-10-01
Engineer:	GS	Date:	03-10-01
Checked By:		Date:	
Approved By:		Date:	
Drg Size:	A1	Sht:	3
SCALE At A1:	DNS	Of:	3
Drg No:	B080-403-1218-ST-A00		