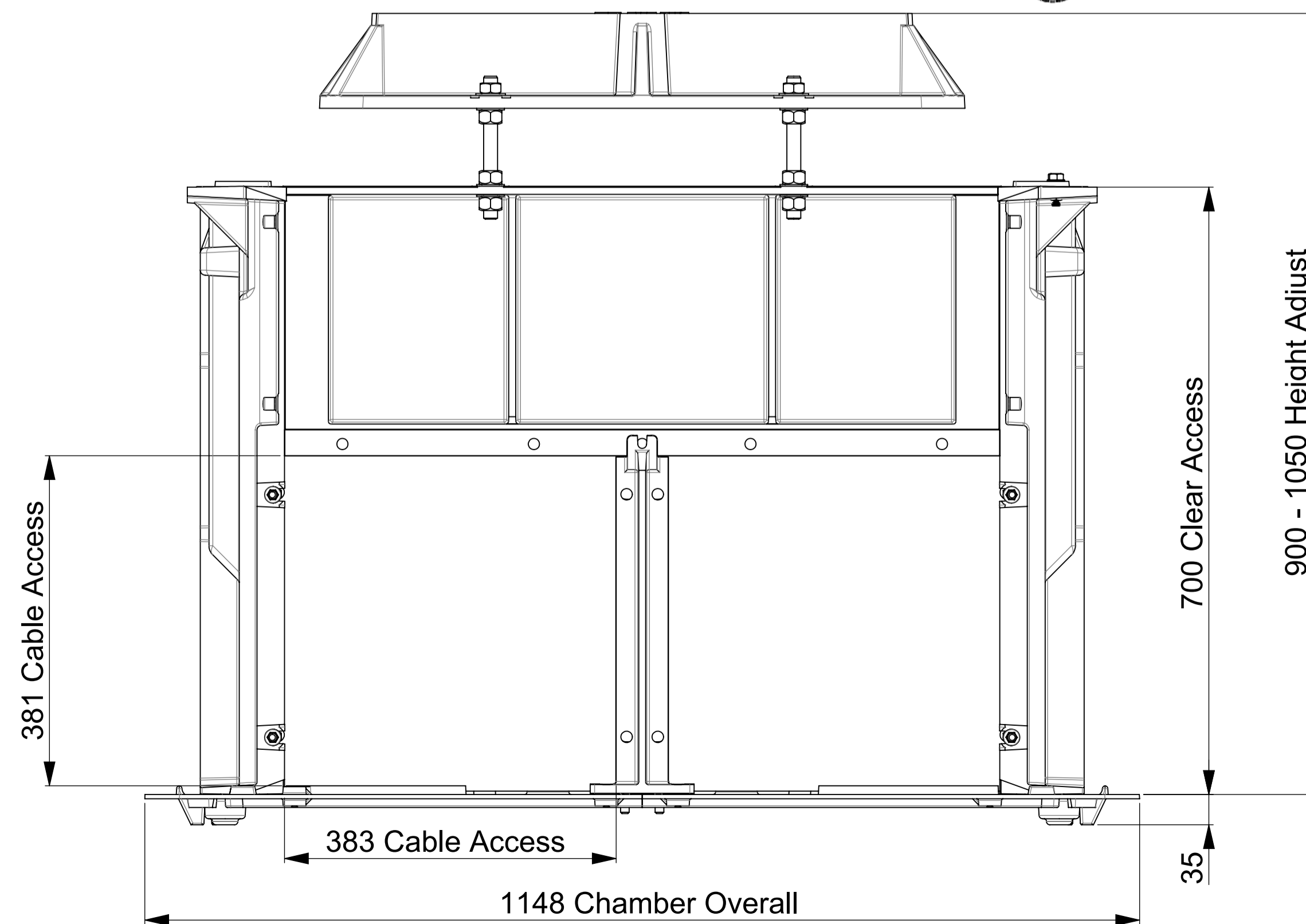
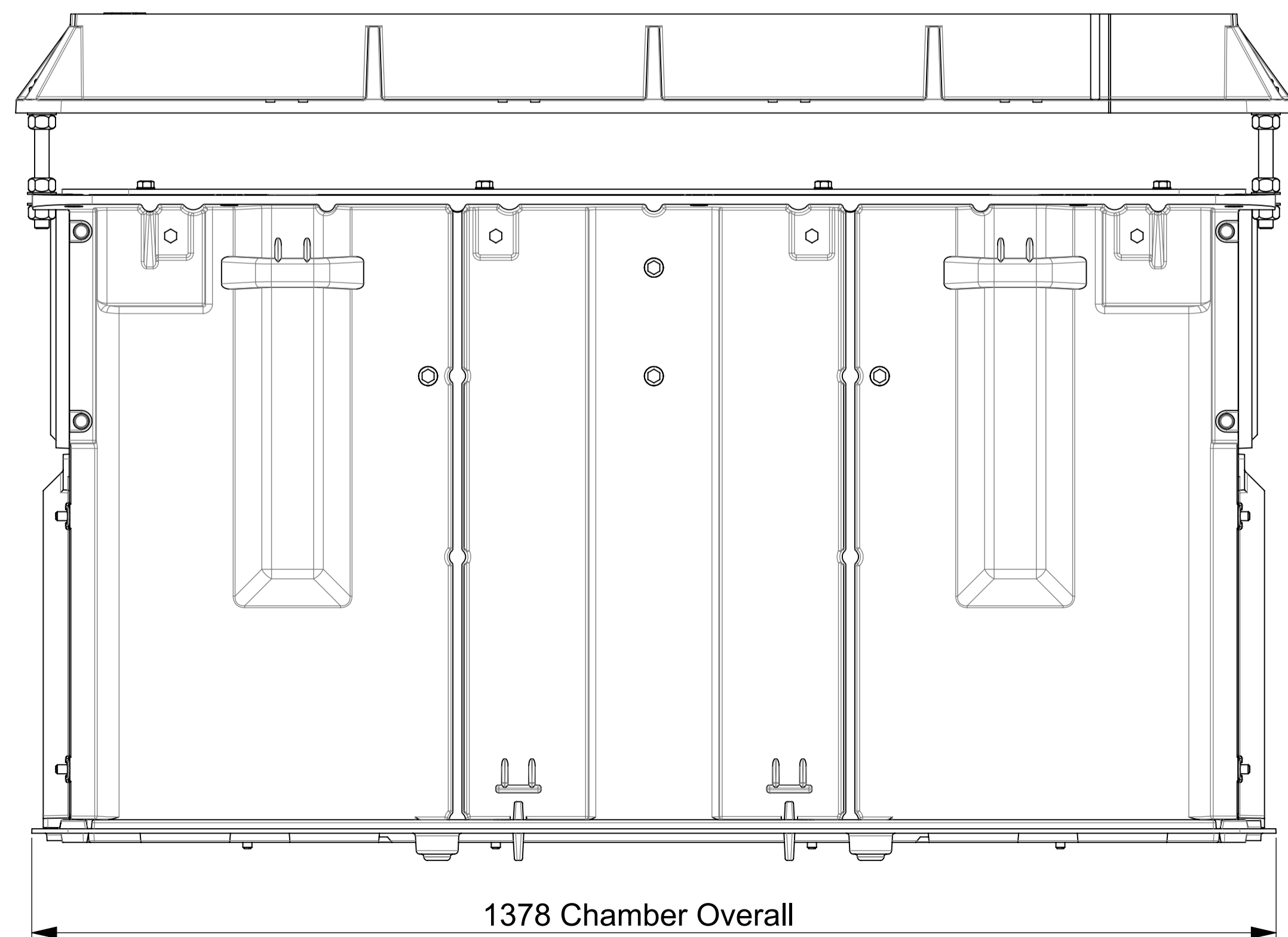
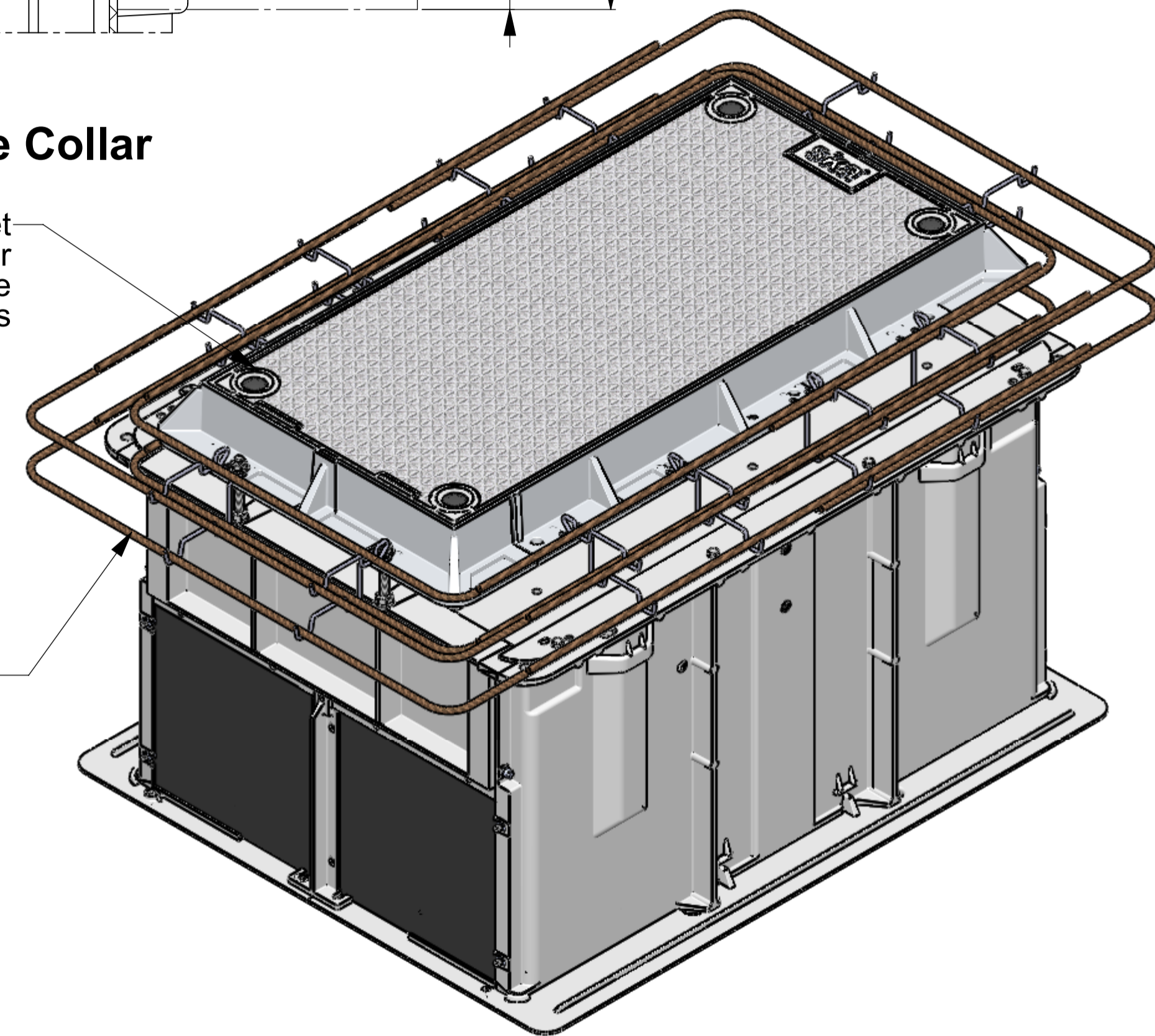


**Concrete Collar**

Class D 210kN Cover Set  
Easily Adjusted For  
Height and Ground Slope  
Via Threaded Rods

Sika Kitset  
Reinforcing Steel  
D210-11-RS-1206  
4- H12, 75 Cover, 600 Min Lap



Issue:	Issued By:	Or No:	Appvd By:	Date:
A	db			05-08-21

Released for Information				
B	db			22-09-21
Flatpack Kitset Reinforcing Steel				

CLIENT

PROJECT:  
**Aluminium Security  
Access Cover Set and  
Chamber Package**

**To Class D210 kN Loads  
To AS 3996 : 2006**

TITLE:  
**D210kN Chamber Package  
1200 x 900 x 700H  
Solid Top**



PO Box 58-491, Greenmount  
Auckland, New Zealand.  
Phone: +64 09 274 5929  
Fax: +64 09 273 9509  
Email: info@sikatech.co.nz  
Website: www.sikatech.co.nz

COPYRIGHT RESERVED ©

THIS INFORMATION IS HIGHLY CONFIDENTIAL  
& IS THE EXCLUSIVE PROPERTY OF  
SIKA TECHNOLOGY LIMITED.

Unless Specified:  
All Dimensions In Millimeters  
Drawn to AS 1100

Drawn By:	db	Date:	05-08-21
Engineer:	DH	Date:	05-08-21
Checked By:		Date:	
Approved By:		Date:	
Drg Size:	A1	Sht:	1
SCALE At A1:	1:5	Of:	1
Drg No:	<b>D210-308-120907-SP-S35</b>		