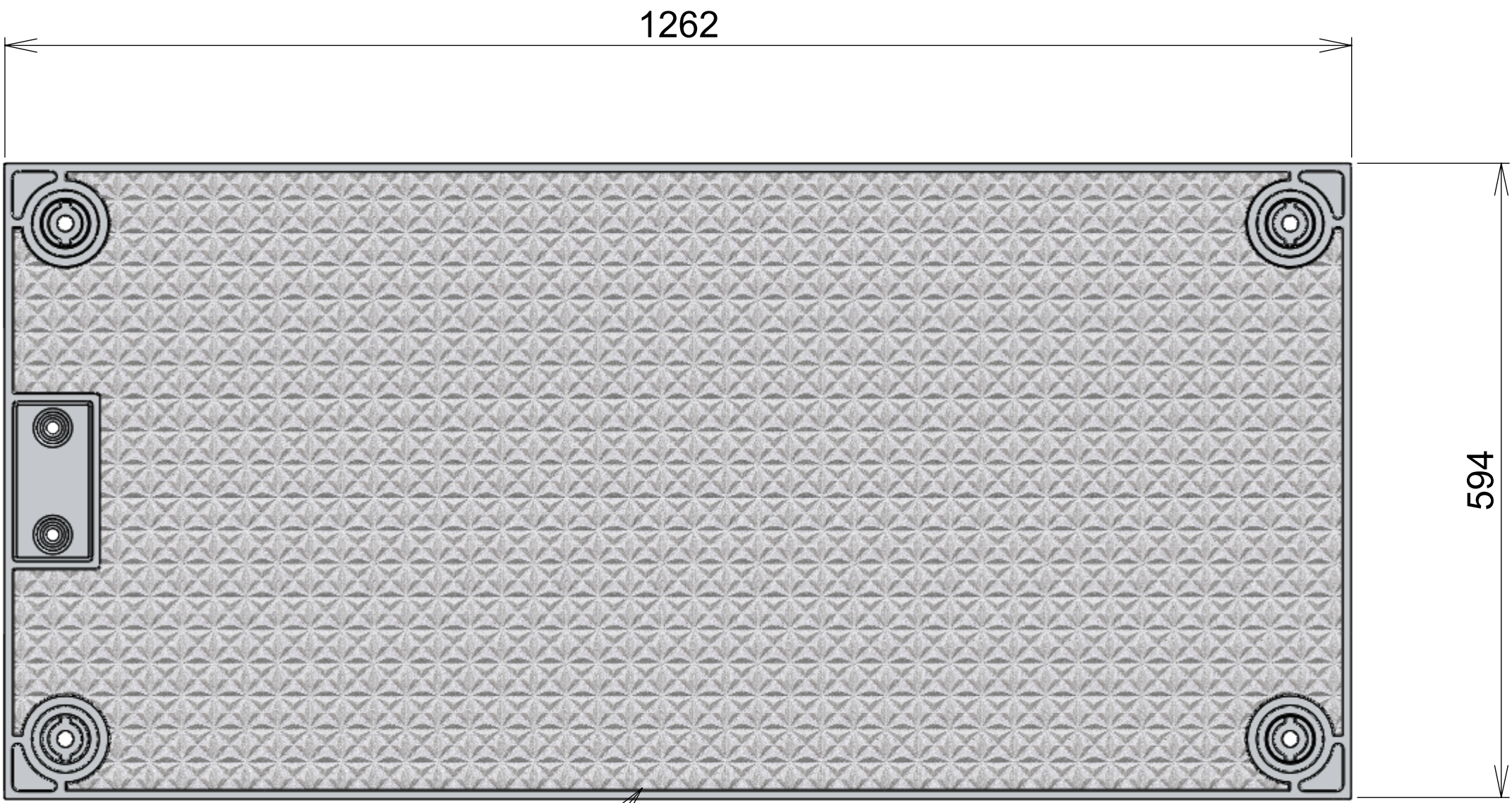


Cover



Cover

30mm Sq - Raised Tetrahedron
Tread Pattern

Embossed Logo
To Client's
Requirements

2222 Overall

634 Clear Opening
with Removable Beam In

1200 Clear Opening with Removable Beam In

556 Clear Opening

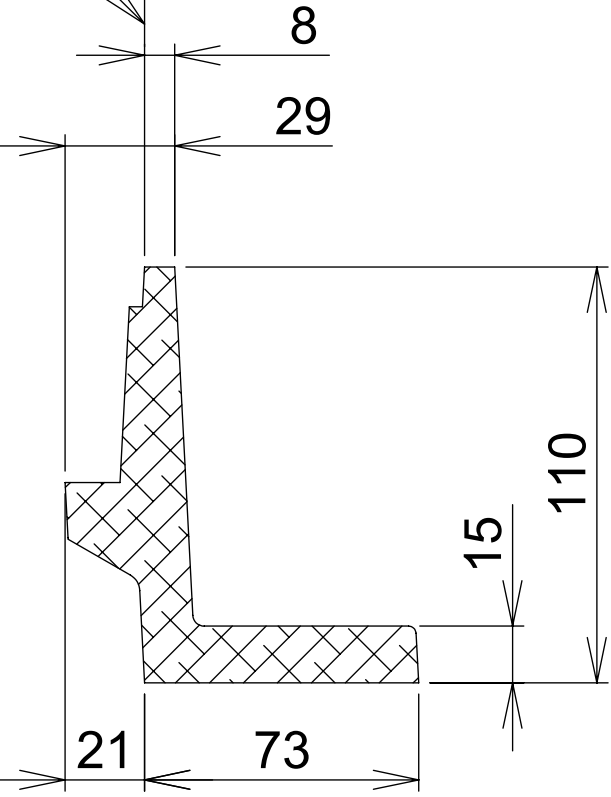
2034 Clear Opening

745 Overall

A
A

139 Overall
110 Frame

Inside Frame



Section A-A

Issue:	Issued By:	Or No:	Appvd By:	Date:
A	NL			09-09-09
Released For Information				
B	SC			25-05-11
Frames Resized				
C	SC			19-04-16
Minimum Concrete Nib was 250 x 250				
D	db			31-08-21
Reviewed and Updated				

CLIENT

PROJECT:
**Aluminium Security
Access Cover Set**

To Class D210kN Loads
To AS 3996 : 2006

TITLE:
**Bolted Cover Set
2100 x 600 Solid Top**



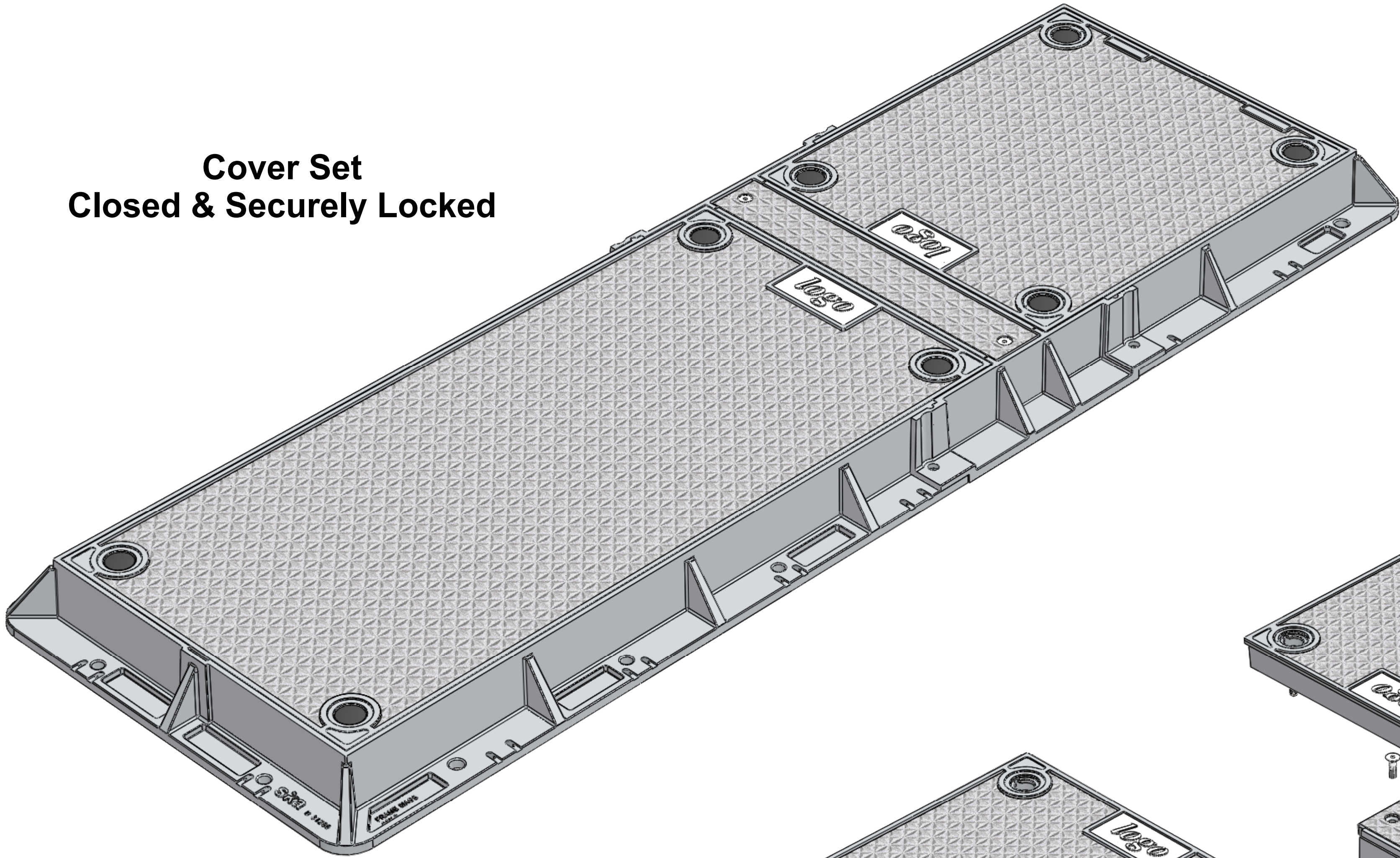
PO Box 58-491, Greenmount
Auckland, New Zealand.
Phone: +64 +9 274 5929
Fax: +64 +9 273 9509
Email: info@sikatech.co.nz
Website: www.sikatech.co.nz
COPYRIGHT RESERVED ©
THIS INFORMATION IS HIGHLY CONFIDENTIAL
& IS THE EXCLUSIVE PROPERTY OF
SIKA TECHNOLOGY LIMITED.

Unless Specified:
All Dimensions In Millimeters
Drawn to AS 1100

Drawn By:	N Lush	Date:	09-09-09	
Engineer:	D Hill	Date:	09-09-09	
Checked By:		Date:		
Approved By:		Date:		
Drg Size:	A1	Sht:	1	Iss:
SCALE At A1:	DNS	Of:	3	D
Drg No:				
D210-303-2106-ST-A00				

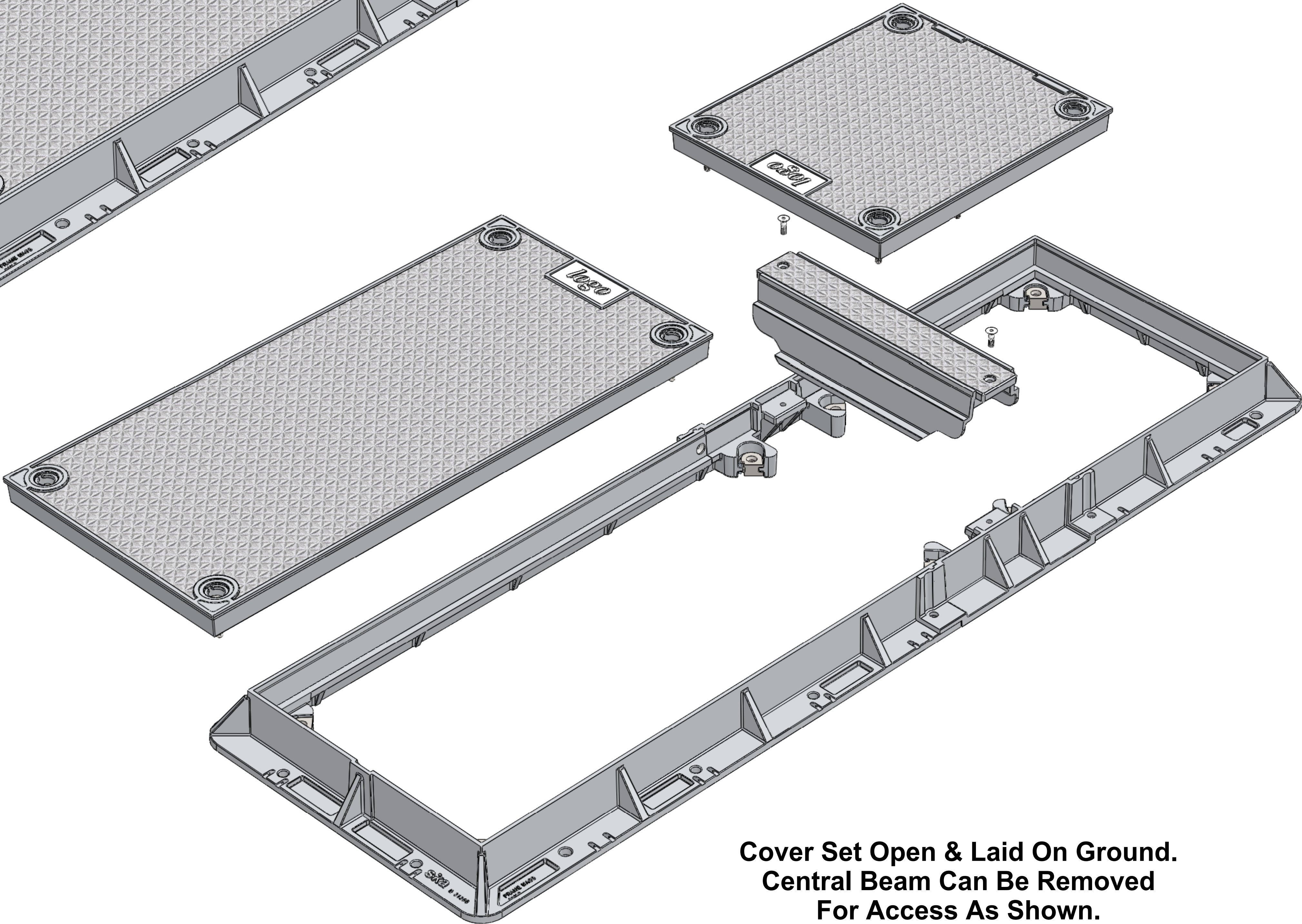
Refer Sika Installation Guide

Cover Set
Closed & Securely Locked



Masses:

1200 x 600 Cover = 38 kg
700 x 600 Cover = 25 kg
Beam = 8 kg
2100 x 600 Frame = 46 kg
TOTAL = 117 kg



Cover Set Open & Laid On Ground.
Central Beam Can Be Removed
For Access As Shown.

Issue:	Issued By:	Or No:	Appvd By:	Date:
A	NL			09-09-09
Released For Information				
B	SC			25-05-11
Frames Resized				
C	SC			19-04-16
Minimum Concrete Nib was 250 x 250				
D	db			31-08-21
Reviewed and Updated				

CLIENT
.

PROJECT:
**Aluminium Security
Access Cover Set**

To Class D210kN Loads
To AS 3996 : 2006

TITLE:
**Bolted Cover Set
2100 x 600 Solid Top**

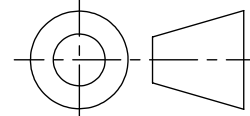


PO Box 58-491, Greenmount
Auckland, New Zealand.
Phone: +64 +9 274 5929
Fax: +64 +9 273 9509
Email: info@sikatech.co.nz
Website: www.sikatech.co.nz

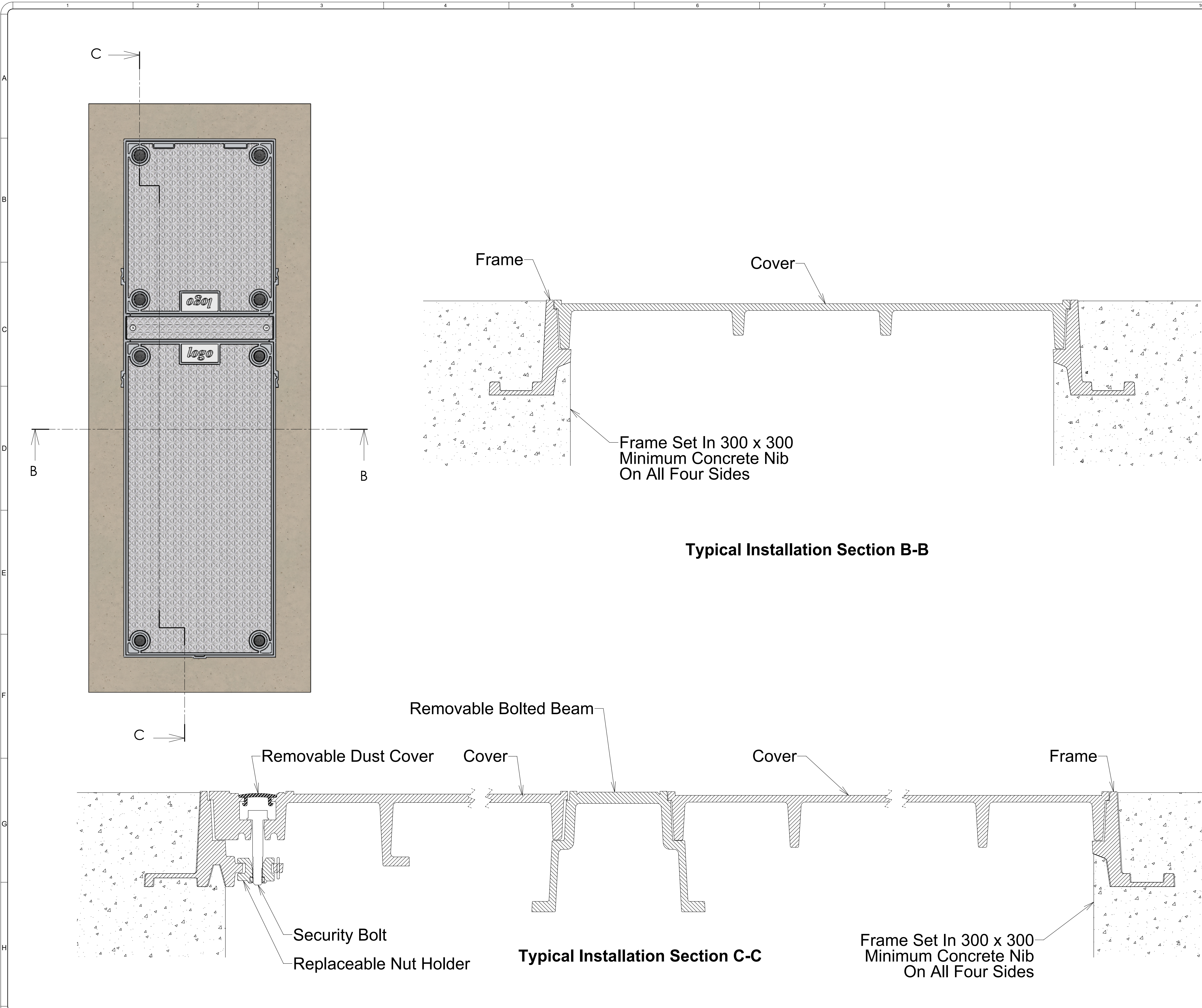
COPYRIGHT RESERVED ©

THIS INFORMATION IS HIGHLY CONFIDENTIAL
& IS THE EXCLUSIVE PROPERTY OF
SIKA TECHNOLOGY LIMITED.

Unless Specified:
All Dimensions In Millimeters
Drawn to AS 1100



Drawn By:	N Lush	Date:	09-09-09	
Engineer:	D Hill	Date:	09-09-09	
Checked By:		Date:		
Approved By:		Date:		
Drg Size: A1		Sht:	2	Iss:
SCALE At A1: DNS		Of:	3	D
Drg No:				
D210-303-2106-ST-A00				



Issue:	Issued By:	Or No:	Appvd By:	Date:
A	NL			09-09-09
Released For Information				
B	SC			25-05-11
Frames Resized				
C	SC			19-04-16
Minimum Concrete Nib was 250 x 250				
D	db			31-08-21
Reviewed and Updated				

CLIENT

PROJECT:
Aluminium Security Access Cover Set

To Class D210kN Loads
To AS 3996 : 2006

TITLE:
**Bolted Cover Set
2100 x 600 Solid Top**



PO Box 58-491, Greenmount
Auckland, New Zealand.
Phone: +64 +9 274 5929
Fax: +64 +9 273 9509
Email: info@sikatech.co.nz
Website: www.sikatech.co.nz

COPYRIGHT RESERVED ©

THIS INFORMATION IS HIGHLY CONFIDENTIAL
& IS THE EXCLUSIVE PROPERTY OF
SIKA TECHNOLOGY LIMITED.

Unless Specified:
All Dimensions In Millimeters
Drawn to AS 1100

Drawn By:	N Lush	Date:	09-09-09	
Engineer:	D Hill	Date:	09-09-09	
Checked By:		Date:		
Approved By:		Date:		
Drg Size: A1		Sht:	3	Iss: D
SCALE At A1: DNS		Of:	3	
Drg No:				
D210-303-2106-ST-A00				