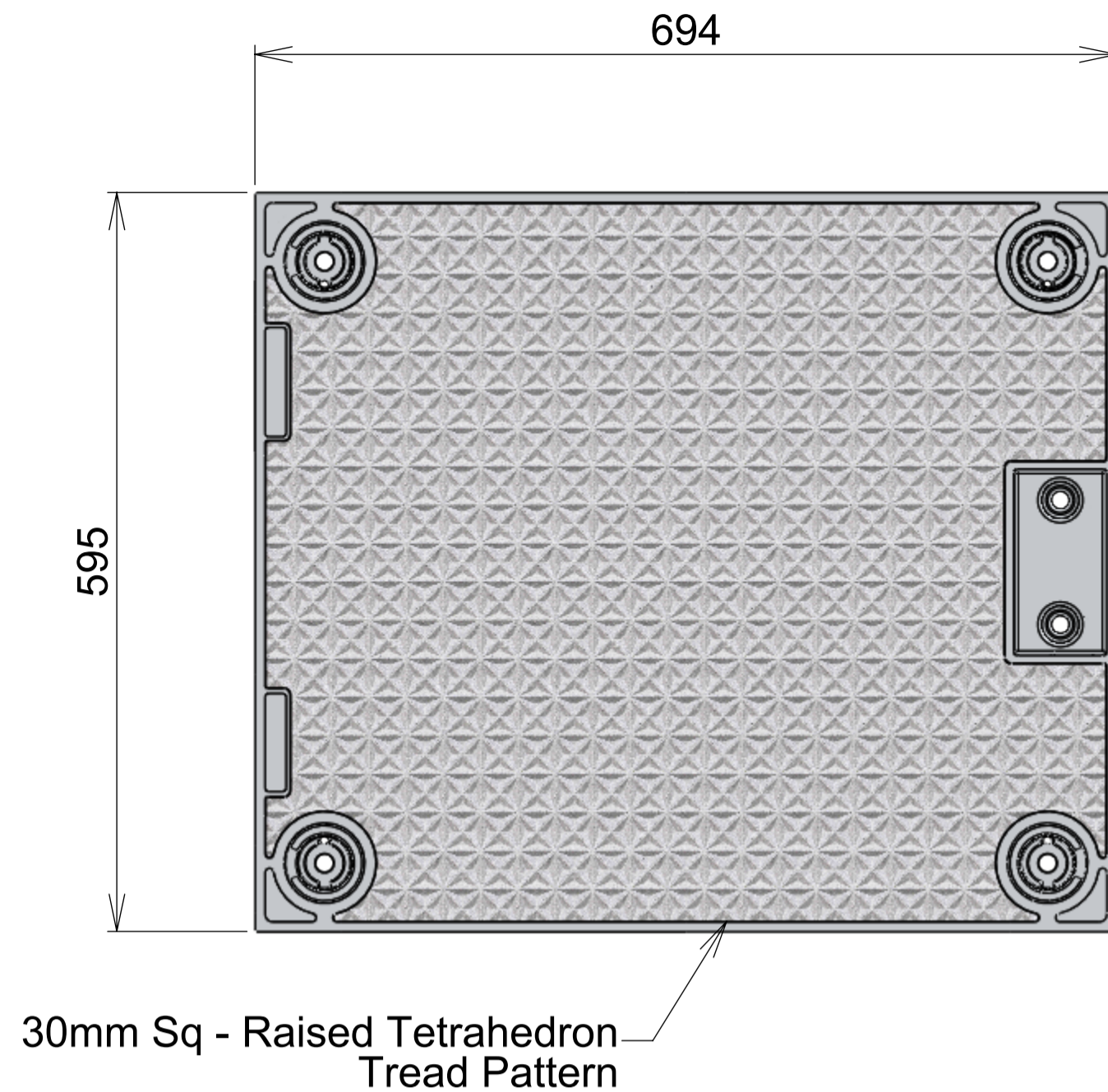
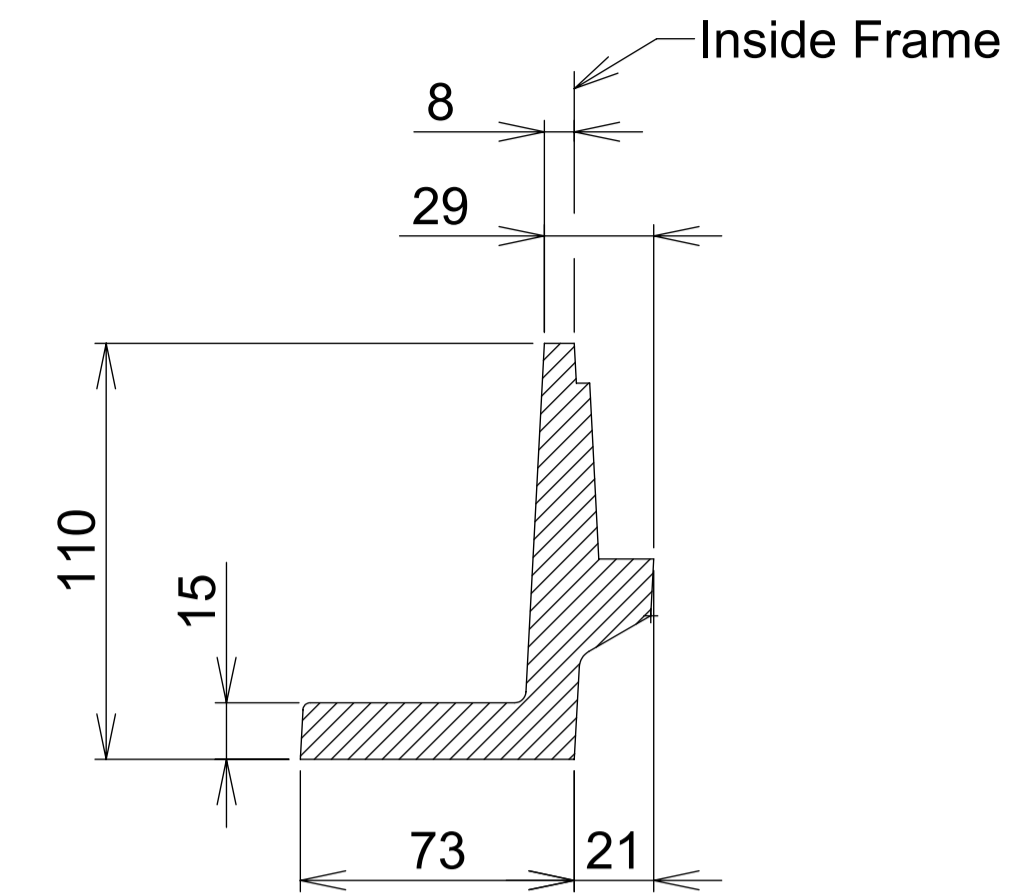


Frame

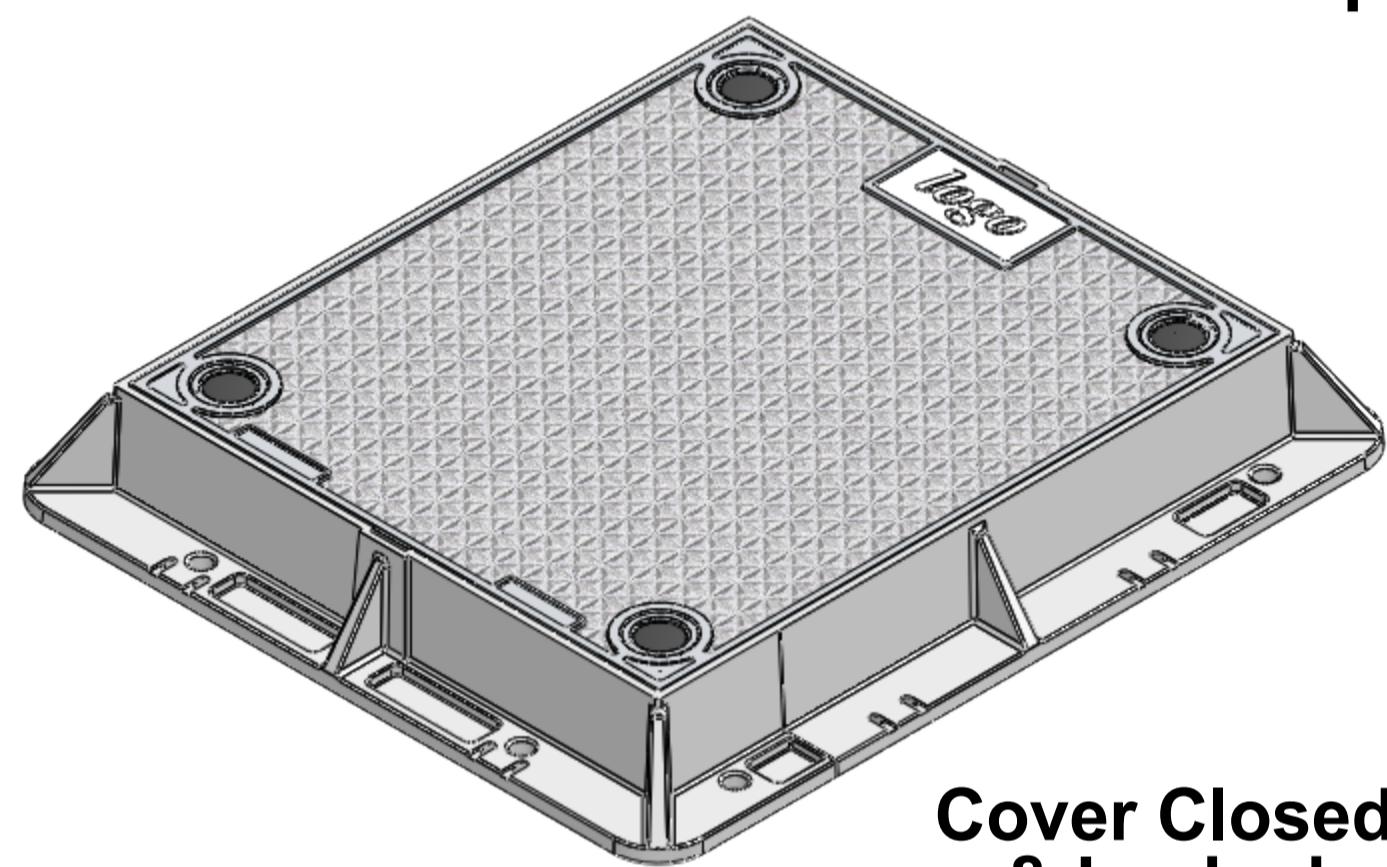


Cover

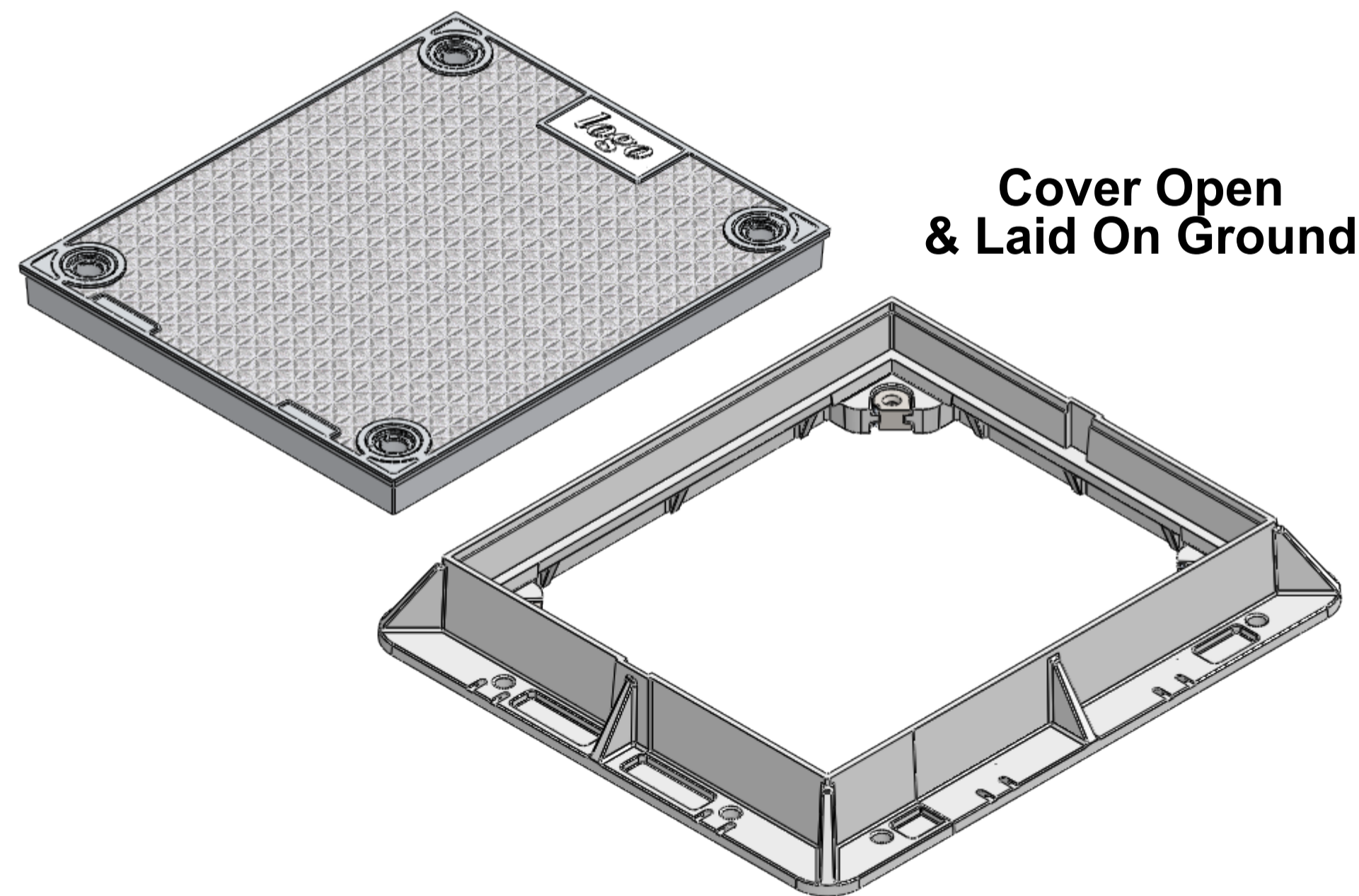
Embossed Logo To Suit Client's Requirements



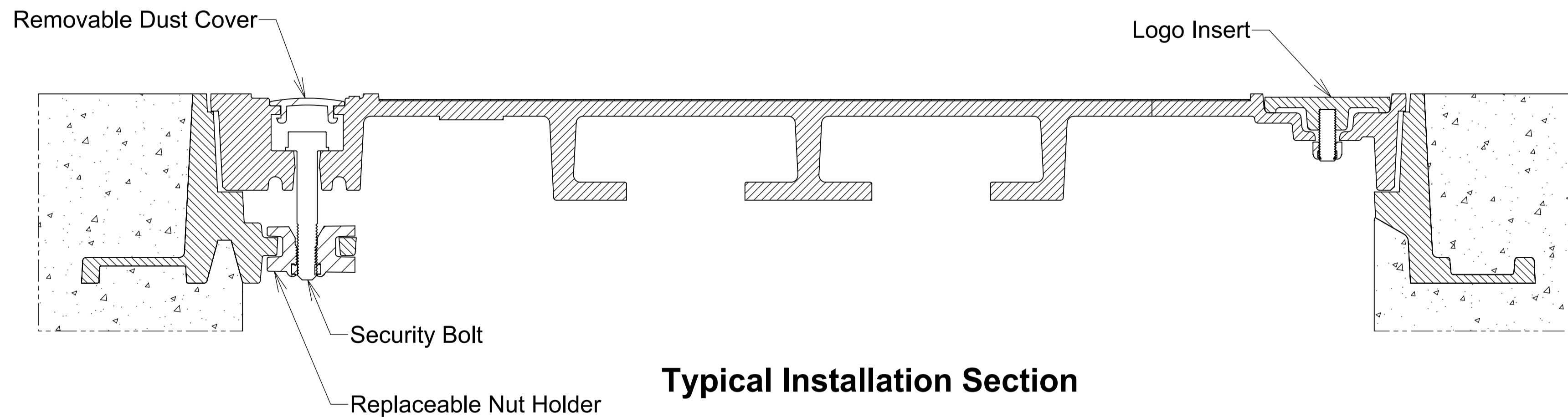
**Section A-A
Typ Frame**



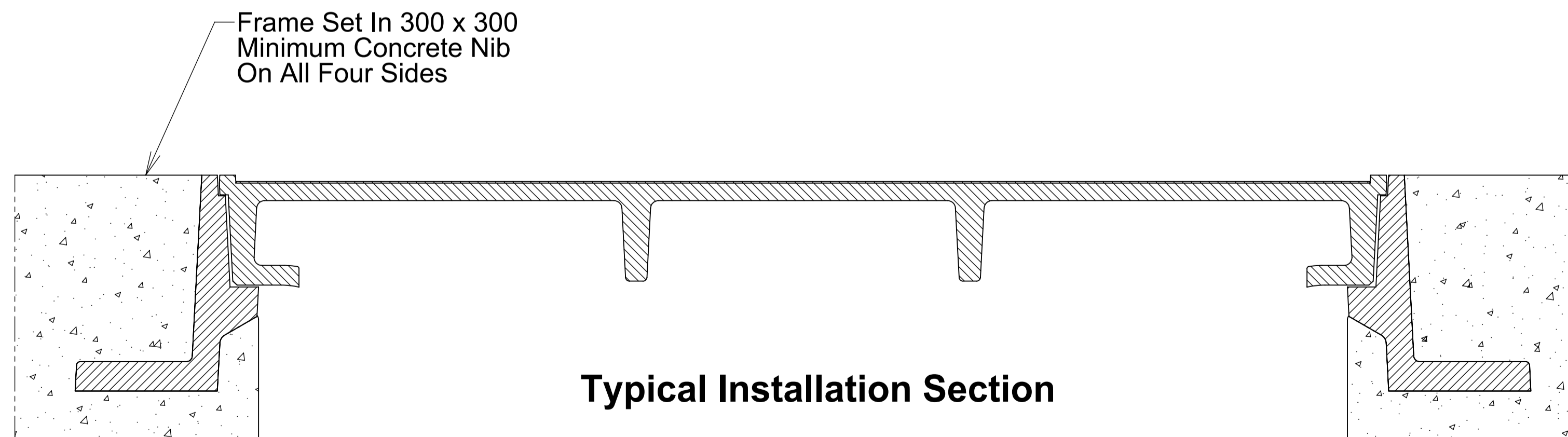
**Cover Closed
& Locked**



**Cover Open
& Laid On Ground**



Typical Installation Section



Typical Installation Section

Masses:
Frame = 22 kg
Cover = 25 kg

Refer Sika Installation Guide

| Issue: | Issued By: | Chkd By: | Appvd By: | Date: |
|------------------------------------|------------|----------|-----------|----------|
| A | NL | . | . | 14-09-06 |
| Released For Approval | | | | |
| B | NL | . | . | 13-08-09 |
| Redrawn To Match As Built | | | | |
| C | db | . | . | 19-04-16 |
| Minimum Concrete Nib was 200 x 200 | | | | |
| D | db | . | . | 30-08-21 |
| Reviewed and Updated | | | | |

CLIENT

PROJECT:
**Aluminium Security
 Access Cover Set**

**To Class D210kN Loads
 To AS 3996: 2006**

TITLE:
**Bolted Cover Set
 700 x 600 Solid Top**



PO Box 58-491, Greenmount
 Auckland, New Zealand.
 Phone: +64 09 274 5929
 Fax: +64 09 273 9509
 Email: info@sikatech.co.nz
 Website: www.sikatech.co.nz

COPYRIGHT RESERVED ©

THIS INFORMATION IS HIGHLY CONFIDENTIAL
 & IS THE EXCLUSIVE PROPERTY OF
 SIKA TECHNOLOGY LIMITED.

Unless Specified:
 All Dimensions In Millimeters
 Drawn to AS 1100

| | | | |
|--------------|-----------------------------|-------|----------|
| Drawn By: | N Lush | Date: | 14-09-06 |
| Engineer: | G Spain | Date: | 14-09-06 |
| Checked By: | | Date: | |
| Approved By: | | Date: | |
| Drg Size: | A1 | Sht: | 1 |
| SCALE At A1: | 1:10 | Of: | 1 |
| Drg No: | D210-303-0706-ST-A00 | | |