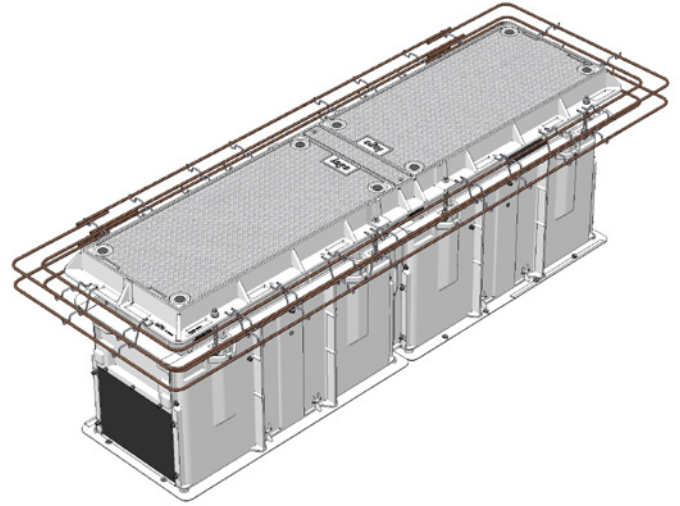
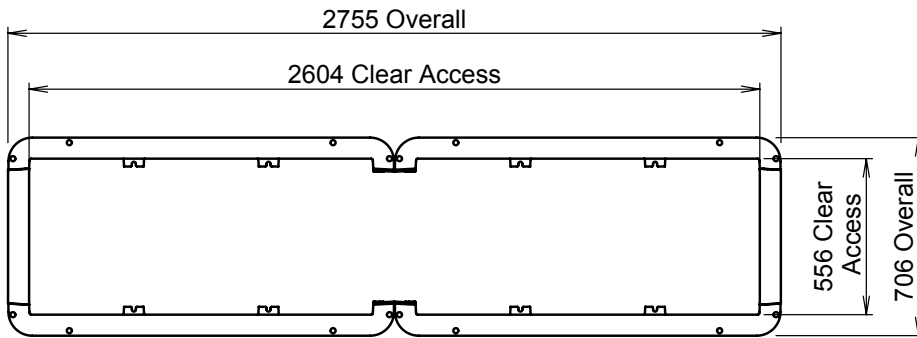


## CLASS D CHAMBER AND COVER SET PACKAGE 2600 X 600 X 700H

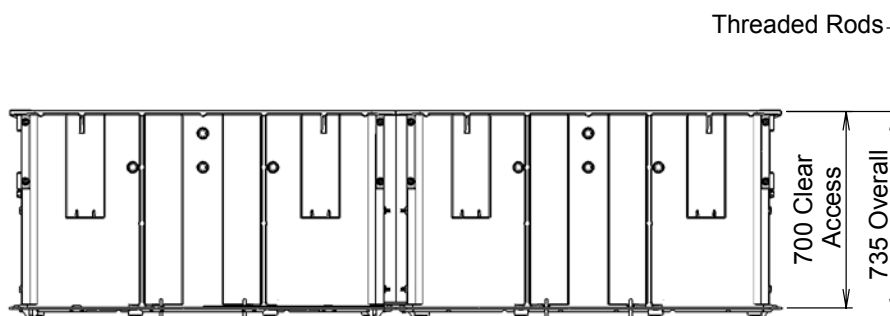
**Dimensions:** 2600 X 600 x 700  
**Standard:** AS 3996-2006  
**Design Load:** Class D210kN  
**Weight:** Covers 40 kg ea Frame  
 52 kg Beam 9 kg;  
 Chamber 147 kg  
**Security:** Bolting Torque  
 Coupling Req'd for  
 Operation  
**Product Code:** D210 308 260607 ST



<b>2600</b> LONG	<b>600</b> WIDE	<b>700</b> HIGH	<b>AS</b>	CLASS D	<b>210</b> KN
---------------------	--------------------	--------------------	-----------	---------	------------------

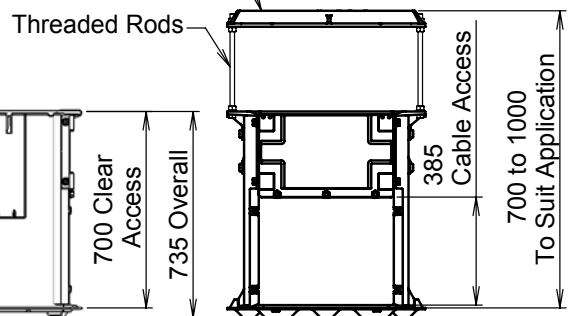


Plan



Side Elevation

Matching Cover Set Shown. Easily Adjusted For Height & Ground Slope, Via Threaded Rods.



End Elevation