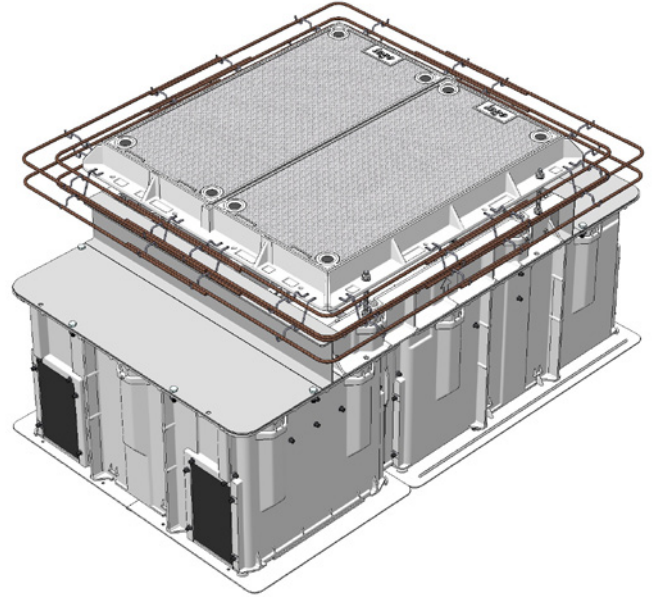
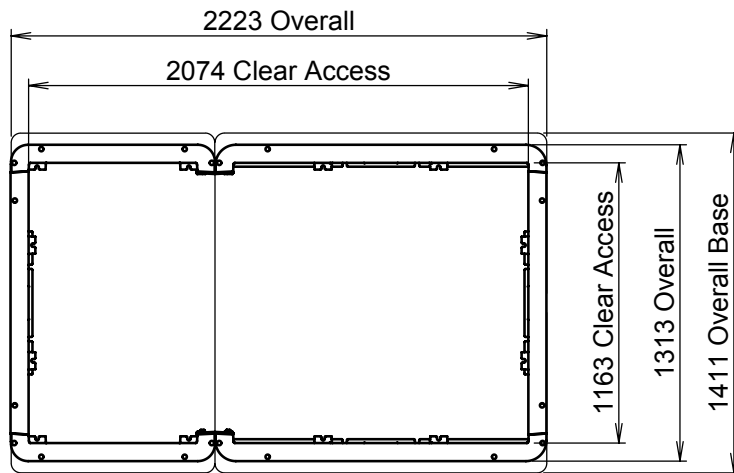


## CLASS D CHAMBER AND COVER SET PACKAGE 2100 X 1200 X 700H

Dimensions:	2100 X 1200 x 700
Standard:	AS 3996-2006
Design Load:	Class D210kN
Weight:	Covers 40 kg ea Frame 39 kg Beam 22 kg; Chamber 165 kg
Security:	Bolting Torque Coupling Req'd for Operation
Product Code:	D210 308 211207 SP

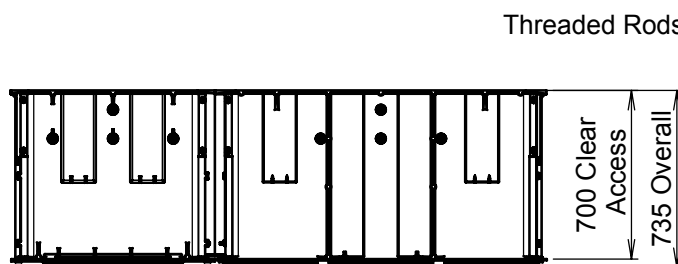


<b>2100</b> LONG	<b>1200</b> WIDE	<b>700</b> HIGH	<b>AS</b>	<b>CLASS D</b>	<b>210</b> kN
---------------------	---------------------	--------------------	-----------	----------------	------------------

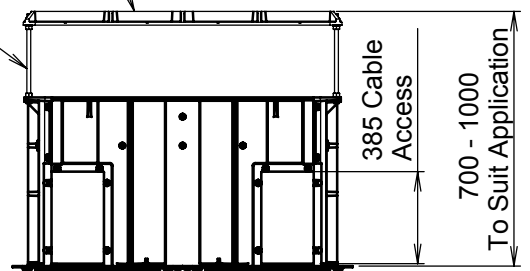


Plan

Matching Cover Set Shown.  
Easily Adjusted For  
Height & Ground Slope,  
Via Threaded Rods.



Side Elevation



End Elevation