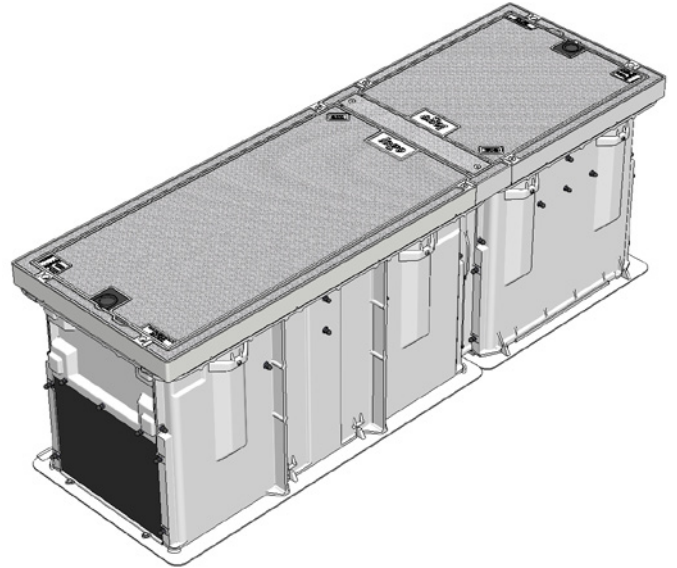
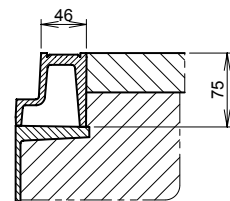
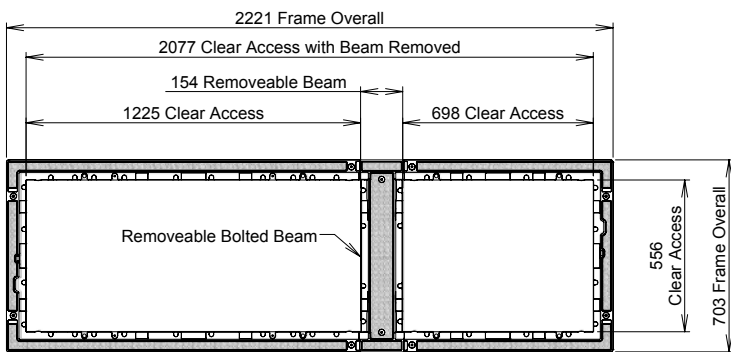


CLASS B CHAMBER AND COVER SET PACKAGE 2100 X 600 X 700H

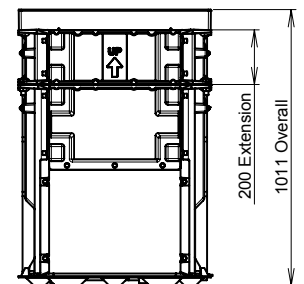
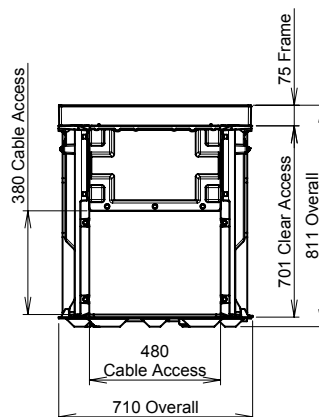
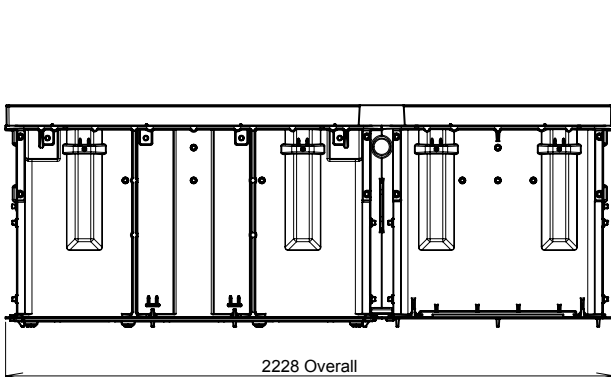
Dimensions: 2100 X 600 x 700
Standard: AS 3996-2006
Design Load: Class B80kN
Weight: Covers 30 kg, 18 kg;
 Frame 23 kg Beam 4 kg; Chamber 110 kg
Security: Lock Block, Key Lifter
 Required for Operation
Product Code: B080 4C08 2106 ST



2100 LONG	600 WIDE	700 HIGH	AS	CLASS B	80 kN
---------------------	--------------------	--------------------	-----------	----------------	-----------------



Typical Installation
Frame Supported by
Chamber / Extension Flange



Extensions Available Separately