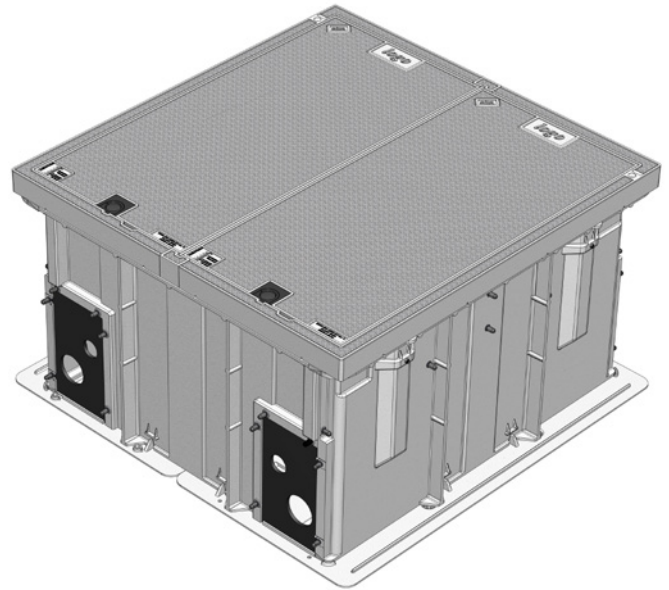
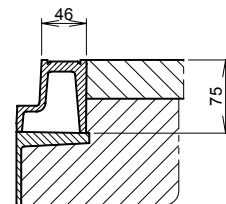
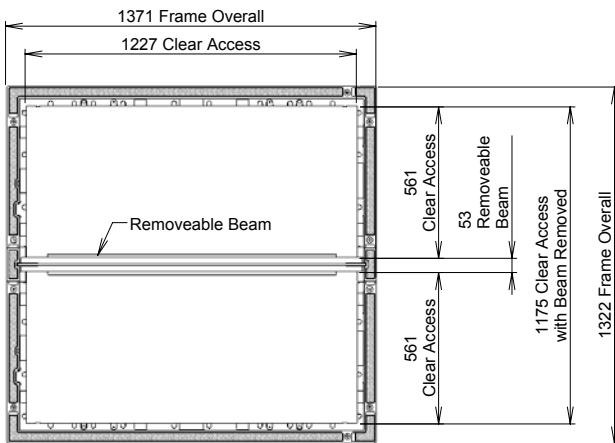


CLASS B CHAMBER AND COVER SET PACKAGE 1200 X 1200 X 700H

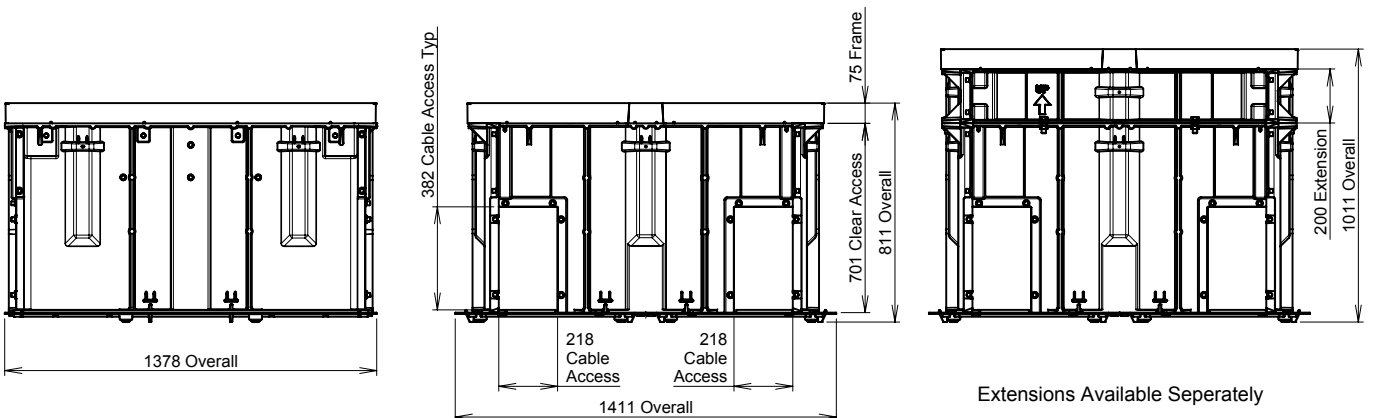
Dimensions:	1200 X 1200 x 700
Standard:	AS 3996-2006
Design Load:	Class B80kN
Weight:	Covers 30 kg ea Frame 20 kg Beam 10 kg; Chamber 111 kg
Security:	Lock Block, Key Lifter Required for Operation
Product Code:	B080 4C08 1212 ST



1200 LONG	1200 WIDE	700 HIGH	AS	CLASS B	80 kN
---------------------	---------------------	--------------------	-----------	----------------	-----------------



Typical Installation
Frame Supported by
Chamber / Extension Flange



Extensions Available Separately