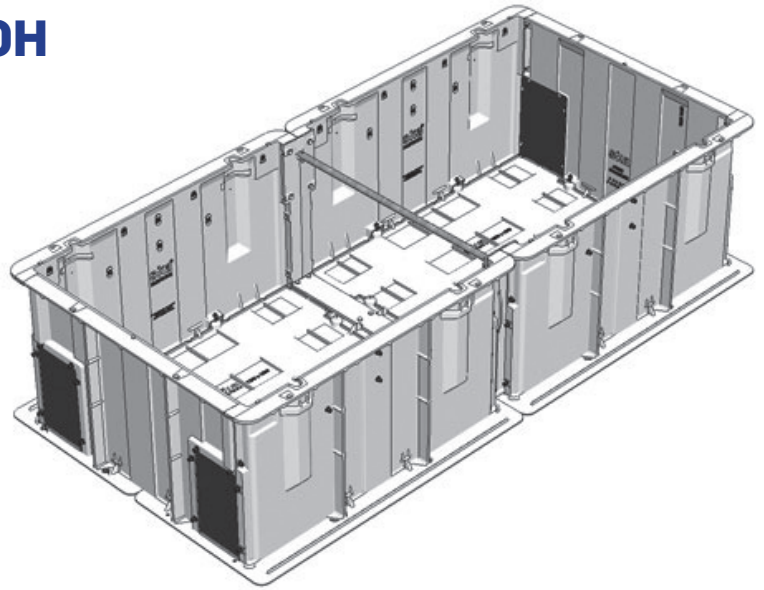


CHAMBER 2600 X 1200 X 700H

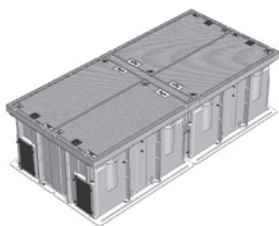
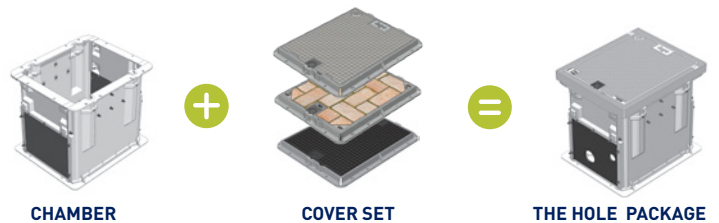
Aluminium Sika Chambers are lightweight, strong and durable. Delivered flat-pack for convenient transportation and engineered for rapid installation in challenging locations. Get the hole cost advantage.



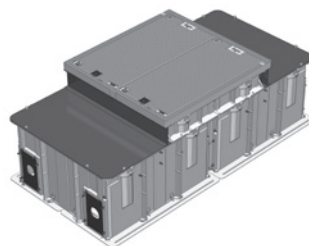
- Dimensions:** 2600 X 1200 X 700
- Standard:** AS 3996-2006
- Design Load:** Class D 210kN
- Weight:** 200kg
- Heaviest Part:** 21kg
- Product Code:** D210-07-261207

2600 LONG	1200 WIDE	700 HIGH	200 KG	AS	CLASS D	210 kN
---------------------	---------------------	--------------------	------------------	-----------	----------------	------------------

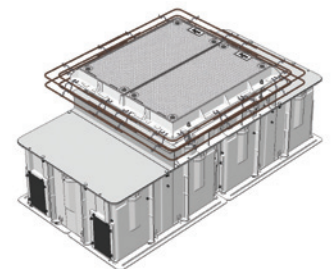
MAKE IT A PACKAGE WITH SIKA COVER SETS



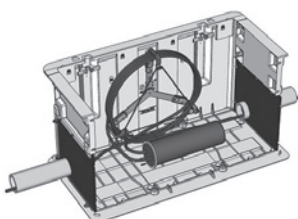
CLASS B CHAMBER AND COVER SET PACKAGE 2600 X 1200 X 700H



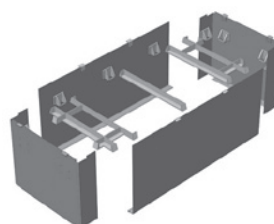
CLASS B CHAMBER AND COVER SET PACKAGE 2600 X 1200 X 700H PARTIAL ACCESS



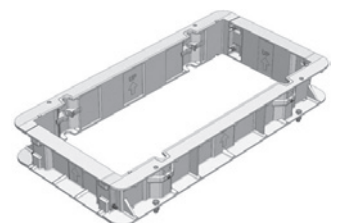
CLASS D CHAMBER AND COVER SET PACKAGE 2600 X 1200 X 700H



CABLE MANAGEMENT BRACKET



REUSABLE CHAMBER SHUTTERS



CHAMBER EXTENSION