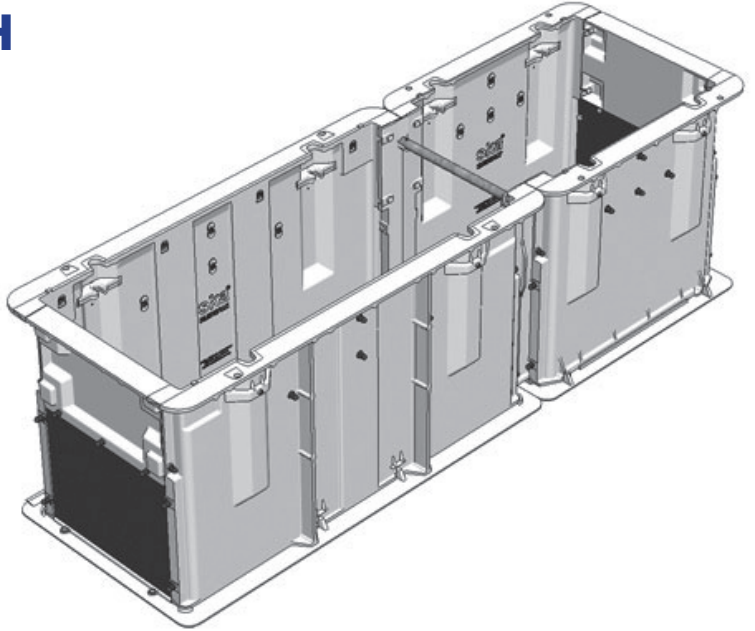


CHAMBER 2100 X 600 X 700H

Aluminium Sika Chambers are lightweight, strong and durable. Delivered flat-pack for convenient transportation and engineered for rapid installation in challenging locations. Get the hole cost advantage.



- Dimensions:** 2100 X 600 X 700
- Standard:** AS 3996-2006
- Design Load:** Class D 210kN
- Weight:** 110kg
- Heaviest Part:** 20kg
- Product Code:** D210-07-210607

2100
LONG

600
WIDE

700
HIGH

110
KG

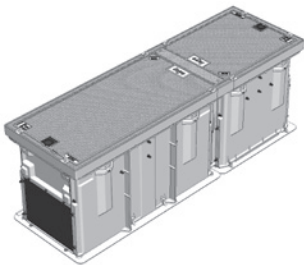
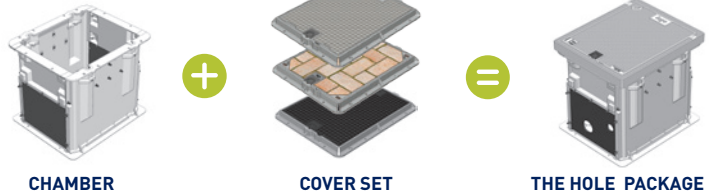
AS

CLASS D

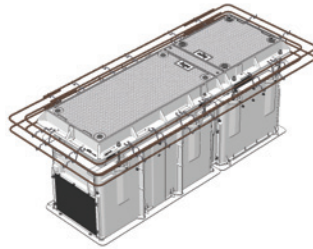
210
kN

MAKE IT A PACKAGE

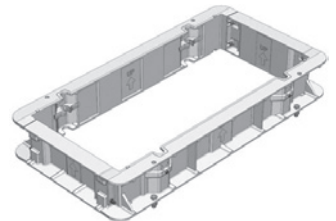
WITH SIKA COVER SETS



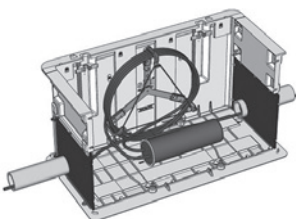
CLASS B CHAMBER AND COVER SET PACKAGE 2100 X 600 X 700H



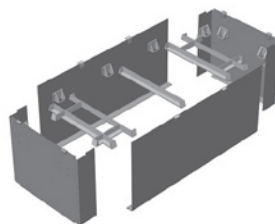
CLASS D CHAMBER AND COVER SET PACKAGE 2100 X 600 X 700H



CHAMBER EXTENSION



CABLE MANAGEMENT BRACKET



REUSABLE CHAMBER SHUTTERS

Visit our website for product details: sikatech.co.nz