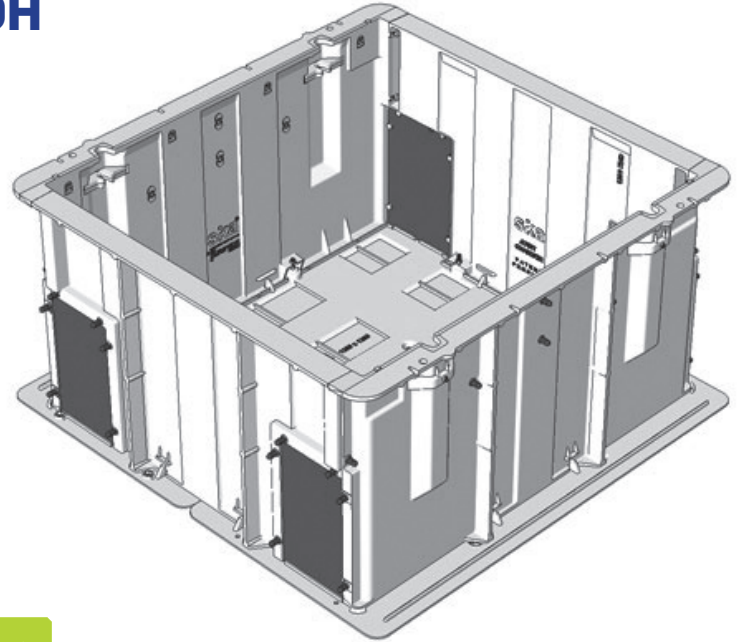


# CHAMBER 1200 X 1200 X 700H

Aluminium Sika Chambers are lightweight, strong and durable. Delivered flat-pack for convenient transportation and engineered for rapid installation in challenging locations. Get the hole cost advantage.

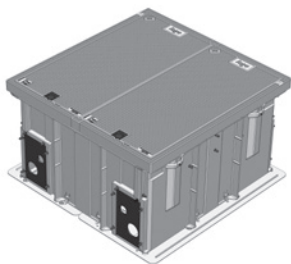
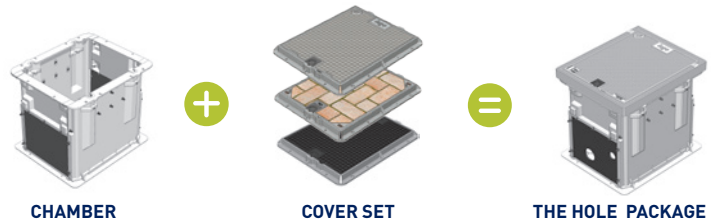
- Dimensions:** 1200 X 1200 X 700
- Standard:** AS 3996-2006
- Design Load:** Class D 210kN
- Weight:** 111kg
- Heaviest Part:** 20kg
- Product Code:** D210-07-121207



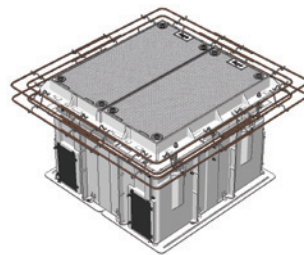
<b>1200</b> LONG	<b>1200</b> WIDE	<b>700</b> HIGH		<b>AS</b>		<b>210</b> kN
---------------------	---------------------	--------------------	--	-----------	--	------------------

## MAKE IT A PACKAGE

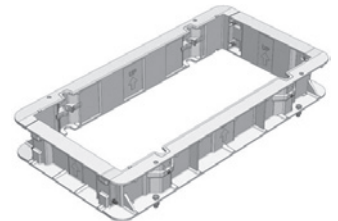
WITH SIKA COVER SETS



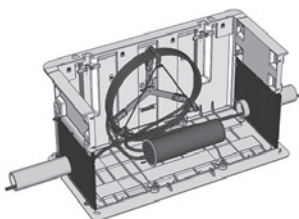
**CLASS B CHAMBER AND COVER SET PACKAGE 1200 X 1200 X 700H**



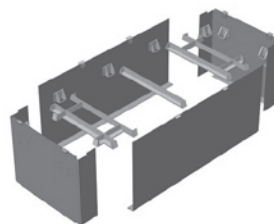
**CLASS D CHAMBER AND COVER SET PACKAGE 1200 X 1200 X 700H**



**CHAMBER EXTENSION**



**CABLE MANAGEMENT BRACKET**



**REUSABLE CHAMBER SHUTTERS**

Visit our website for product details: [sikatech.co.nz](http://sikatech.co.nz)