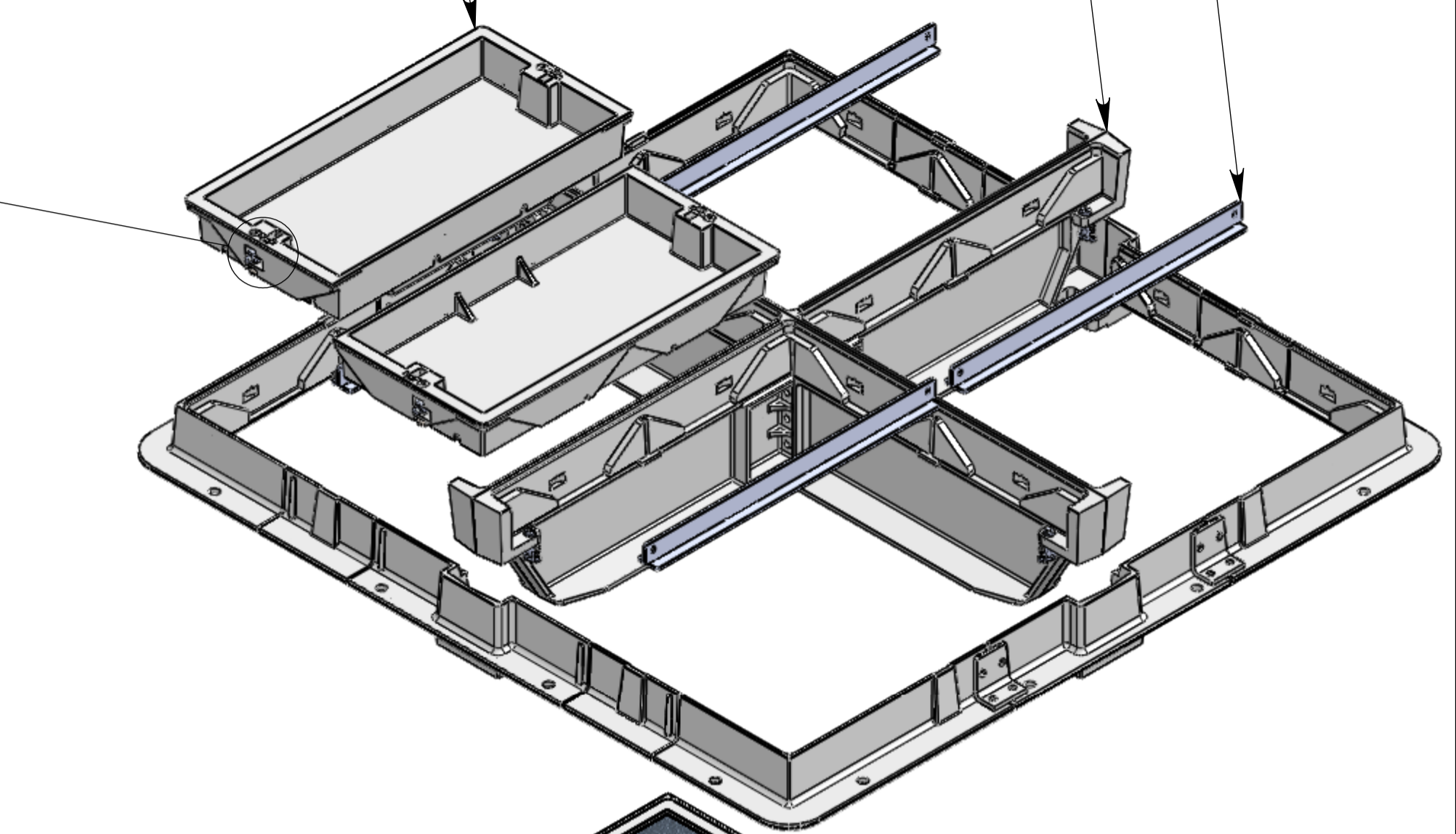


QT Latch
Operate with M10 Hex Key
(Secured to the Cover)

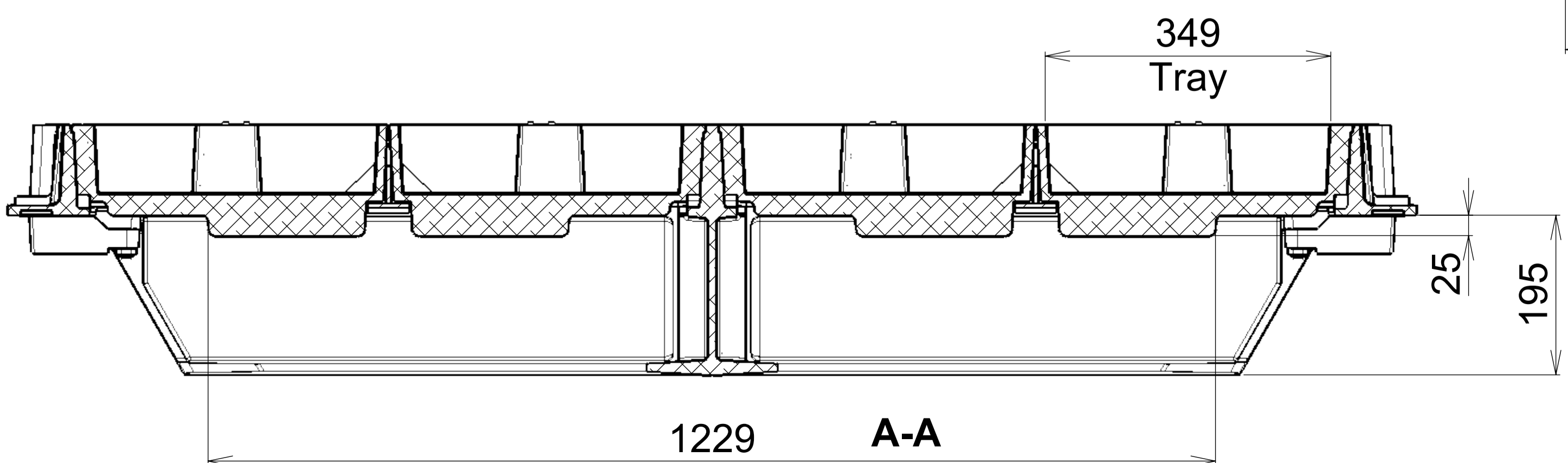
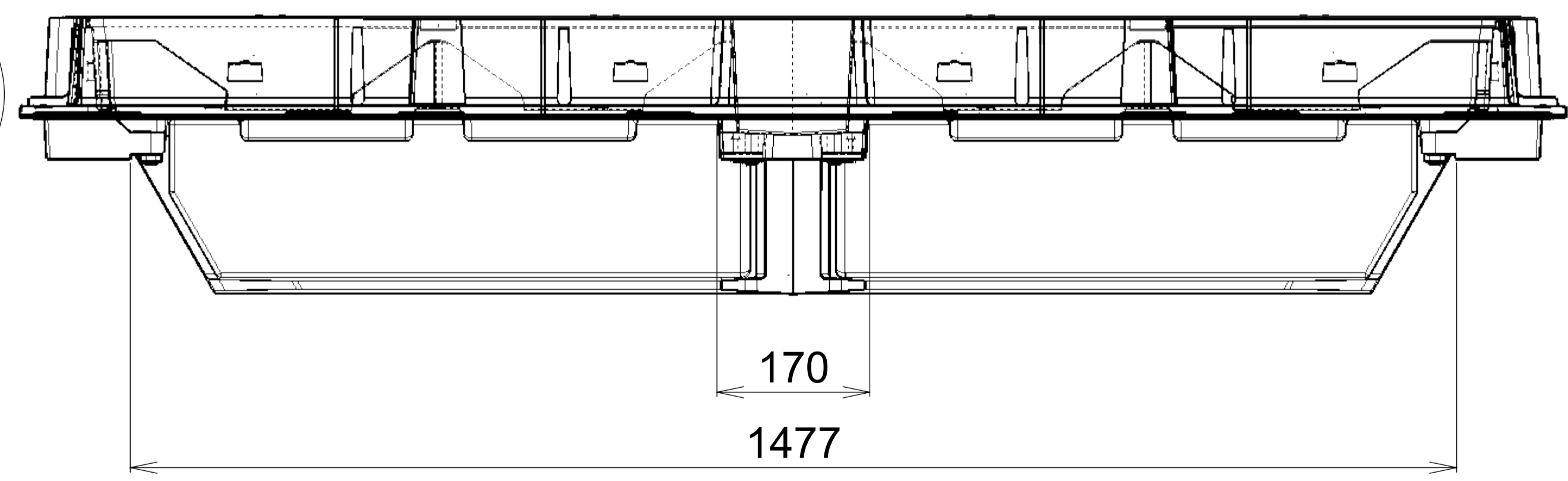
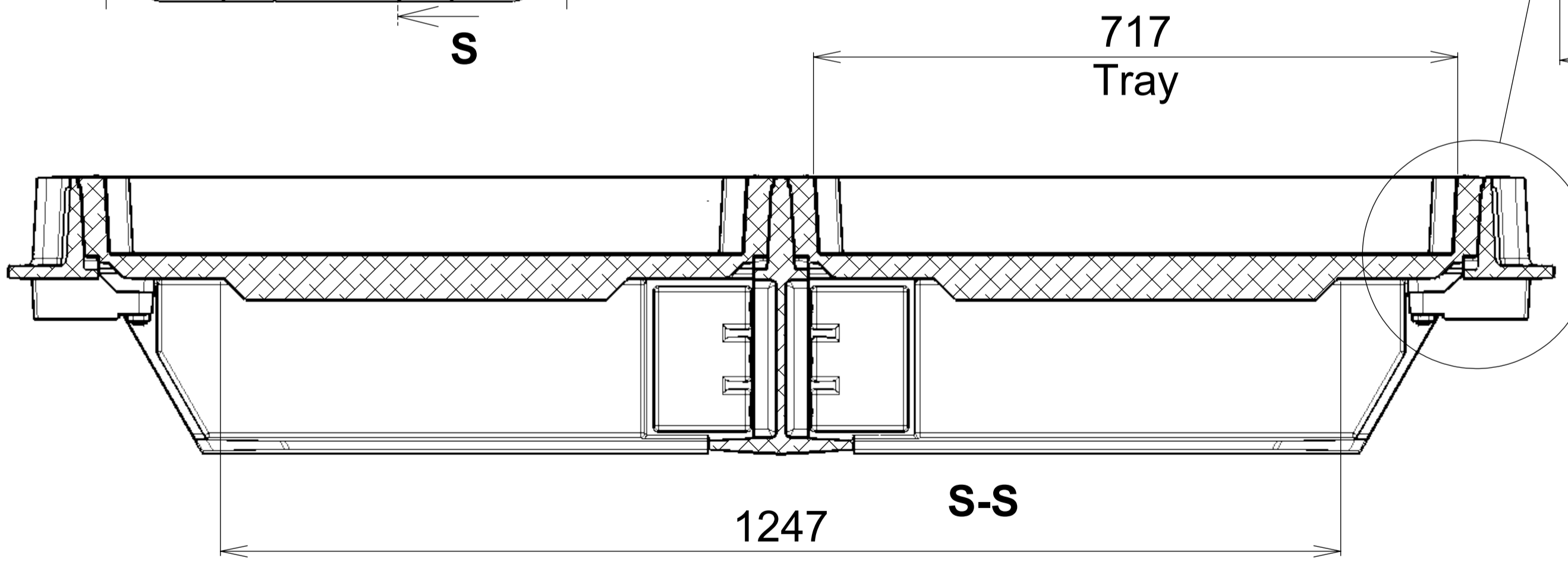
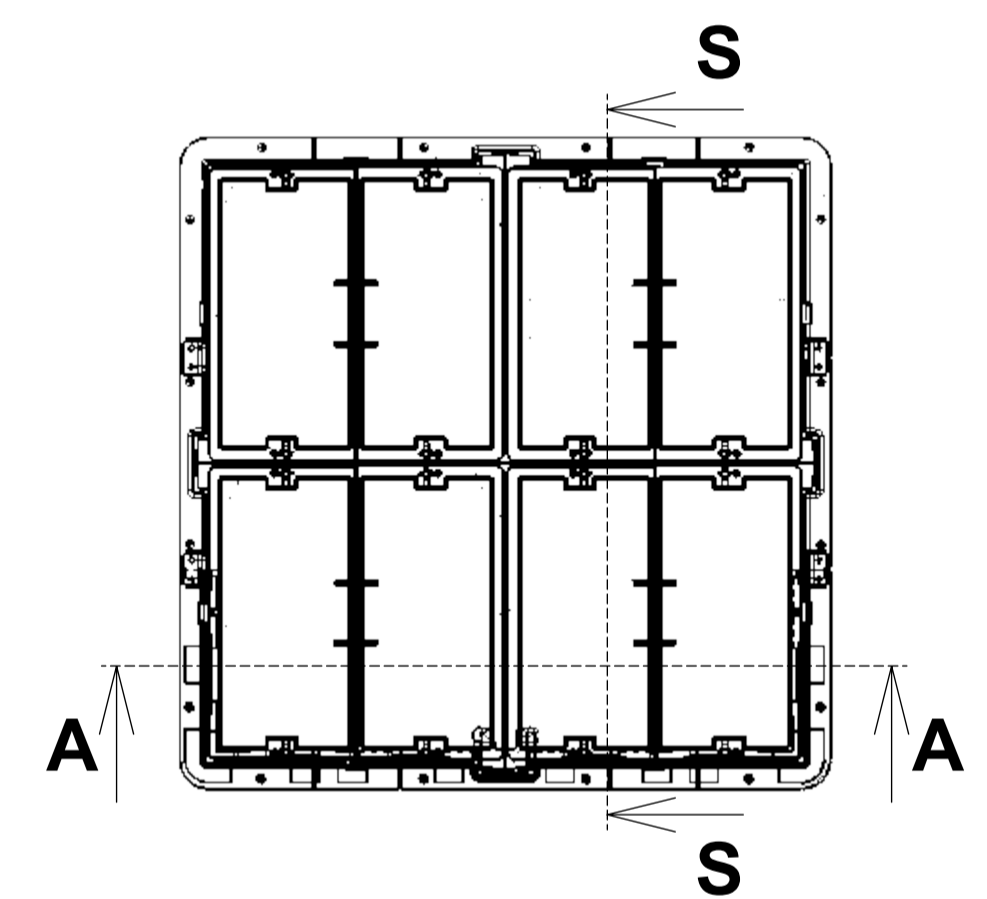
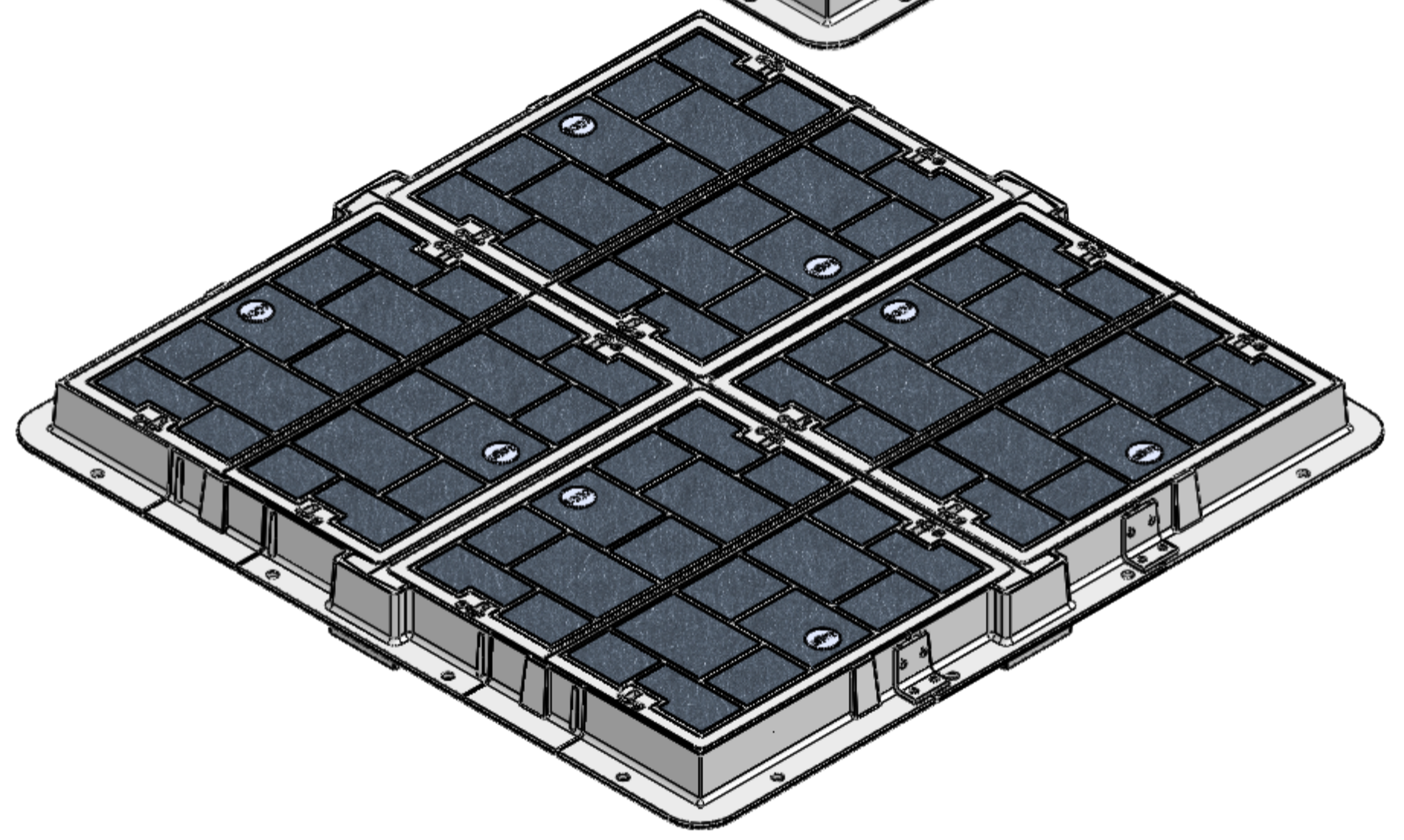
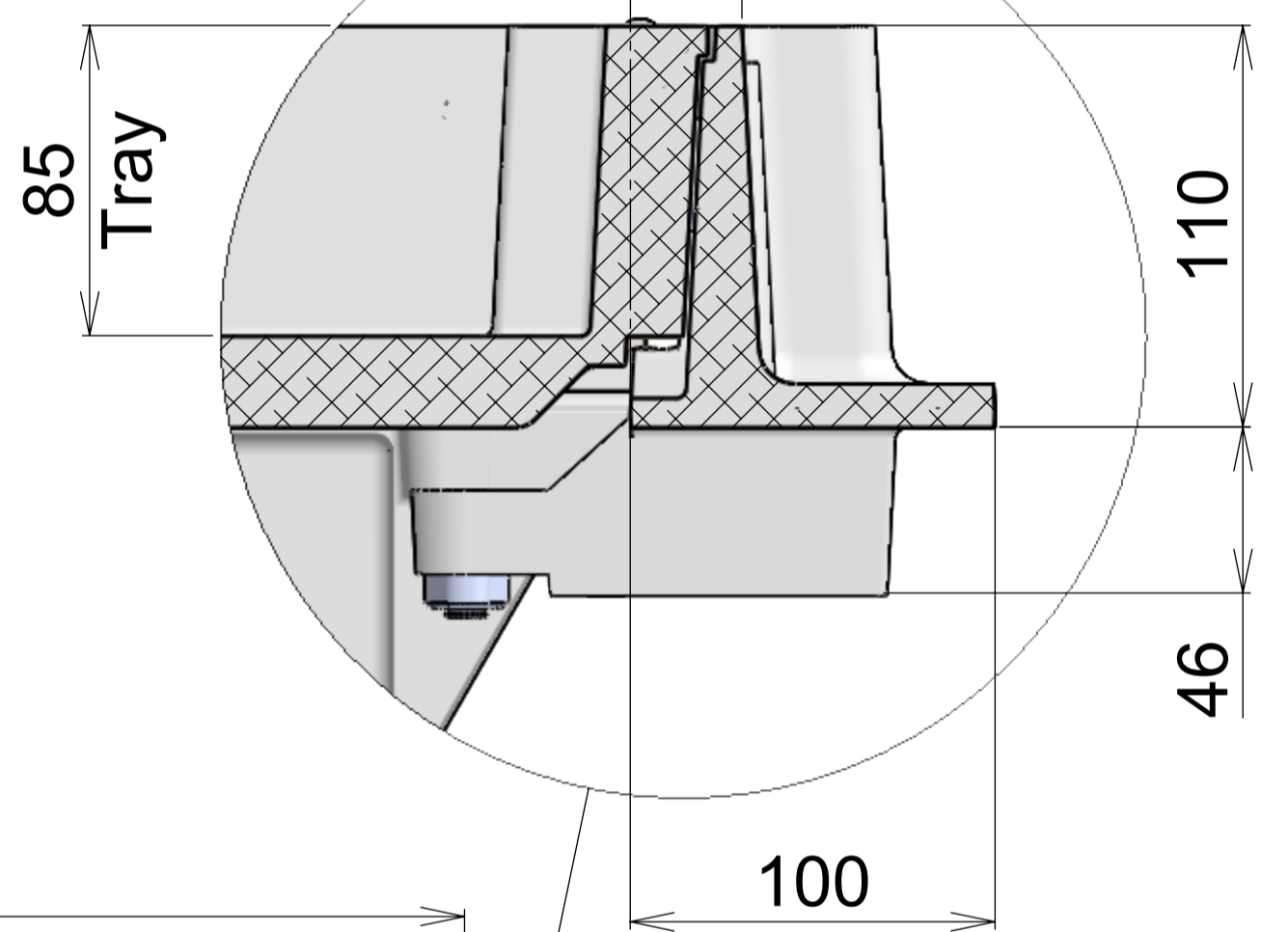
Infill Paver Cover
D210-7V04-0707-IP

Removable
Slide Bars

Removable
Beam Assembly



CA 30.5



Issue:	Issued By:	Or No:	Appvd By:	Date:
A	sfc	.	.	23-10-19

Released For Manufacture

CLIENT

PROJECT:
**Aluminium Security
Access Cover Set**

To Class D210kN Loads
To AS 3996 : 2006

TITLE:
**QT Latched VLoc Cover Set
1500 x 1500 Infill Paver**



PO Box 58-491, Greenmount
Auckland, New Zealand.
Phone: +64 +9 274 5929
Fax: +64 +9 273 9509
Email: info@sikatech.co.nz
Website: www.sikatech.co.nz
COPYRIGHT RESERVED ©

THIS INFORMATION IS HIGHLY CONFIDENTIAL
& IS THE EXCLUSIVE PROPERTY OF
SIKA TECHNOLOGY LIMITED.

Unless Specified:
All Dimensions In Millimeters
Drawn to AS 1100

Drawn By:	sfc	Date:	23-10-19
Engineer:	DH	Date:	23-10-19
Checked By:		Date:	
Approved By:		Date:	
Drg Size:	A1	Sht:	1
SCALE At A1:	NTS	Of:	1
Drg No:	A		

COMPONENT MASS
FRAME: 60 kg
BEAM ASSEMBLY: 70 kg
EMPTY COVER: 30 kg
FILL@ 2300 kg/m³: 47 kg
77 kg

D210-7V03-1515-IP-A00