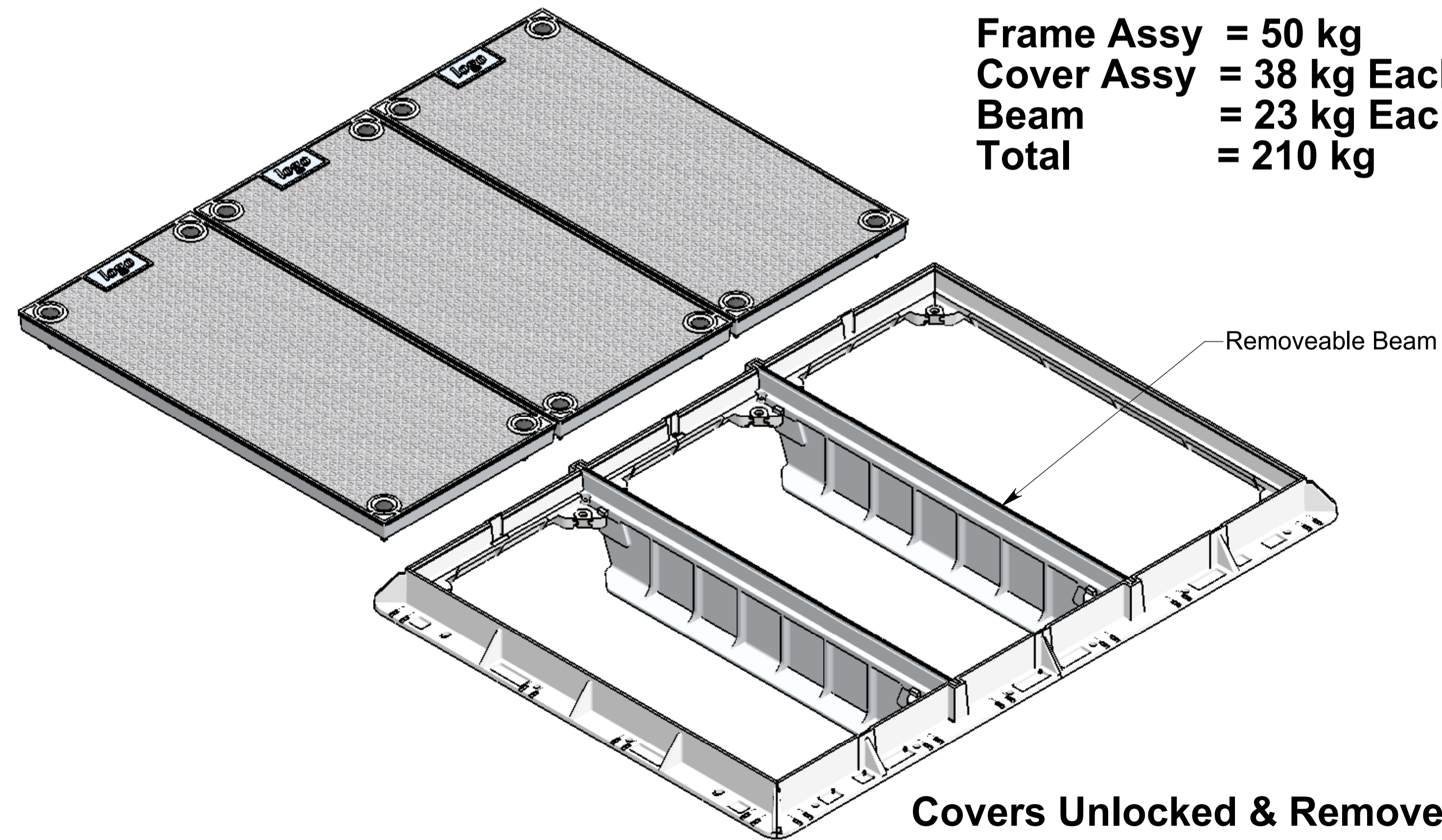
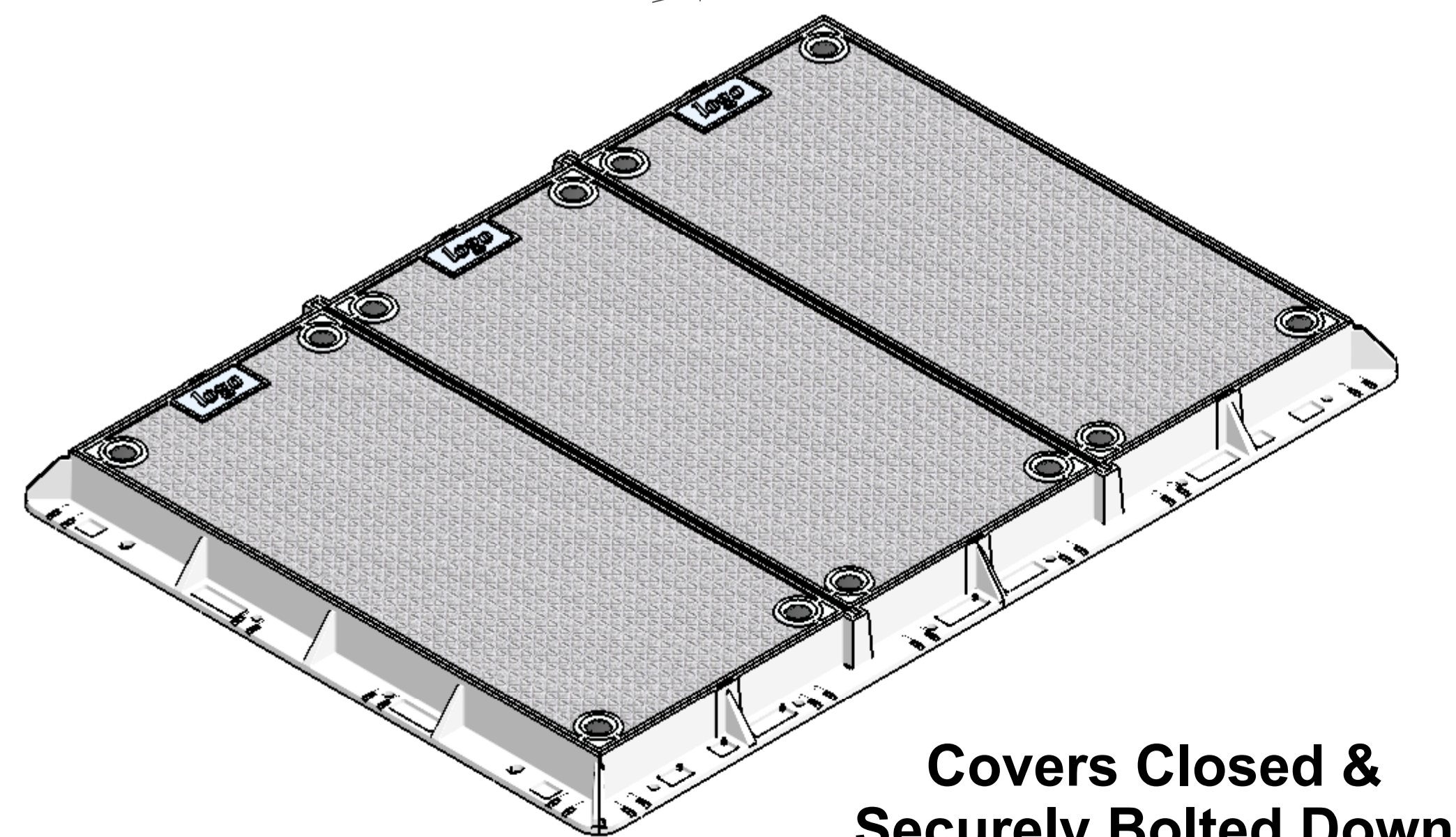


Centre Beam

Masses:

Frame Assy = 50 kg
Cover Assy = 38 kg Each
Beam = 23 kg Each
Total = 210 kg



Refer Sika Installation Guide

Issue:	Issued By:	Chkd By:	Appvd By:	Date:
A	DH			01-03-03
Released For Manufacture				
B	db			29-05-12
Recorded, Was D-31812-01				
C	db			09-07-14
Updated To As Built				

CLIENT

PROJECT:

Aluminium Security Access Cover Set Bolted 1200 x 1800

To Class D210kN Loads To AS 3996:2006

TITLE:

Bolted Cover Set 1200 x 1800 Solid Top



PO Box 58-491, Greenmount Auckland, New Zealand.
Phone: +64 +9 274 5929
Fax: +64 +9 273 9509
Email: info@sikatech.co.nz
Website: www.sikatech.co.nz

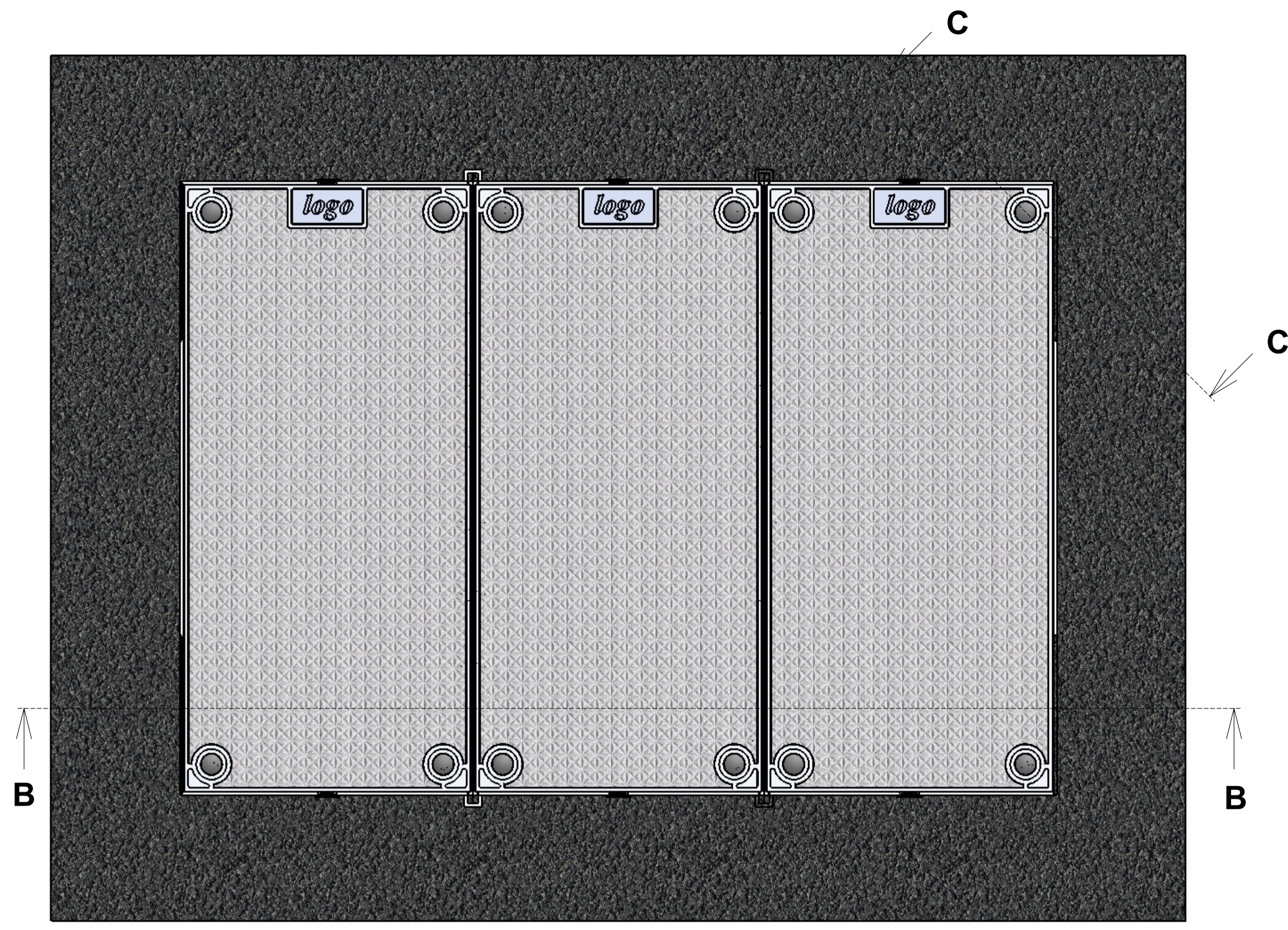
COPYRIGHT RESERVED ©

THIS INFORMATION IS HIGHLY CONFIDENTIAL & IS THE EXCLUSIVE PROPERTY OF SIKA TECHNOLOGY LIMITED.

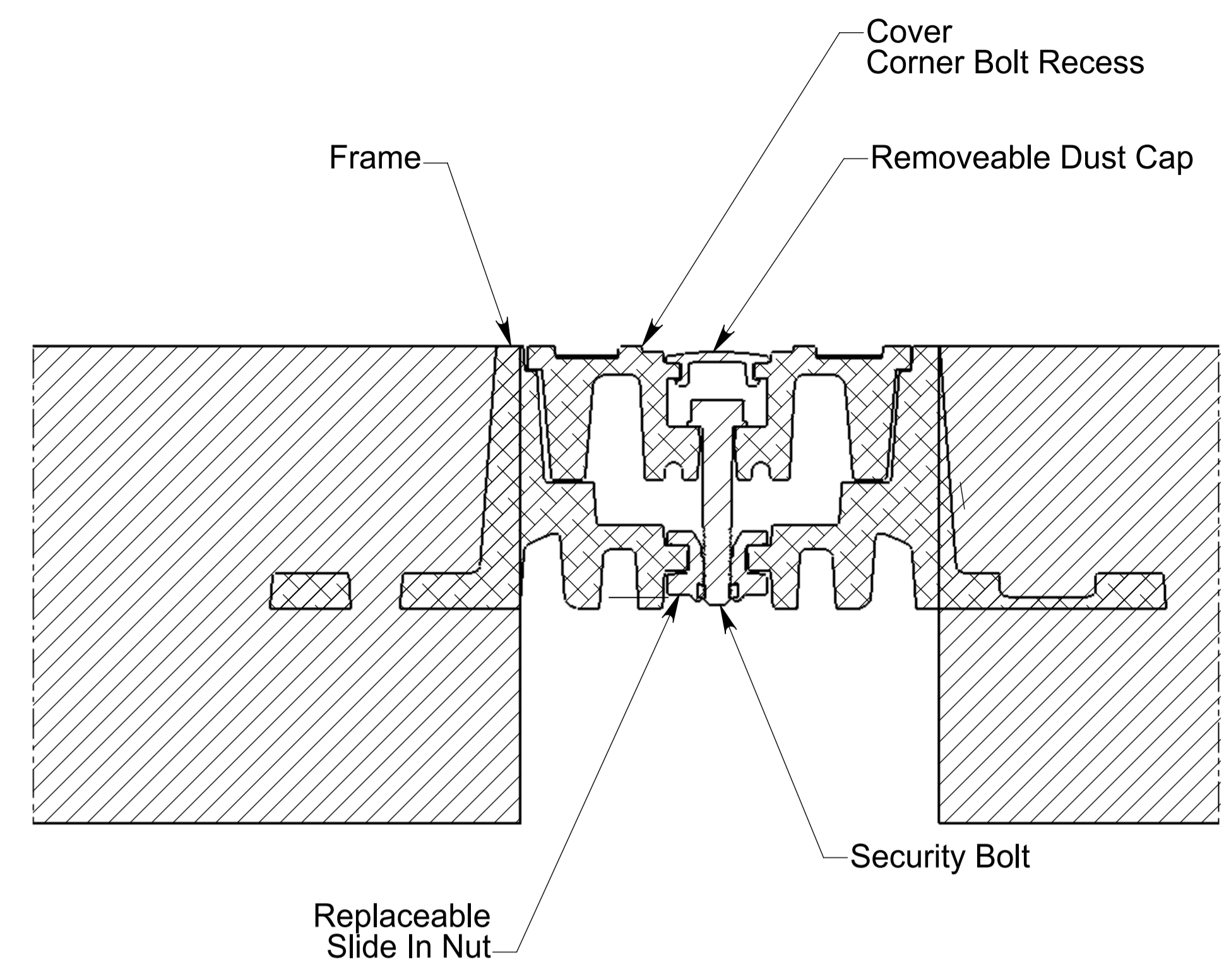
Unless Specified:
All Dimensions In Millimeters
Drawn to AS 1100

Drawn By:	NL	Date:	01-03-03
Engineer:	GS	Date:	01-03-03
Checked By:		Date:	
Approved By:		Date:	
Drg Size:	A1	Sht:	1
SCALE At A1:	1:6	Of:	2
Drg No:	D210-303-1218-ST-A00		

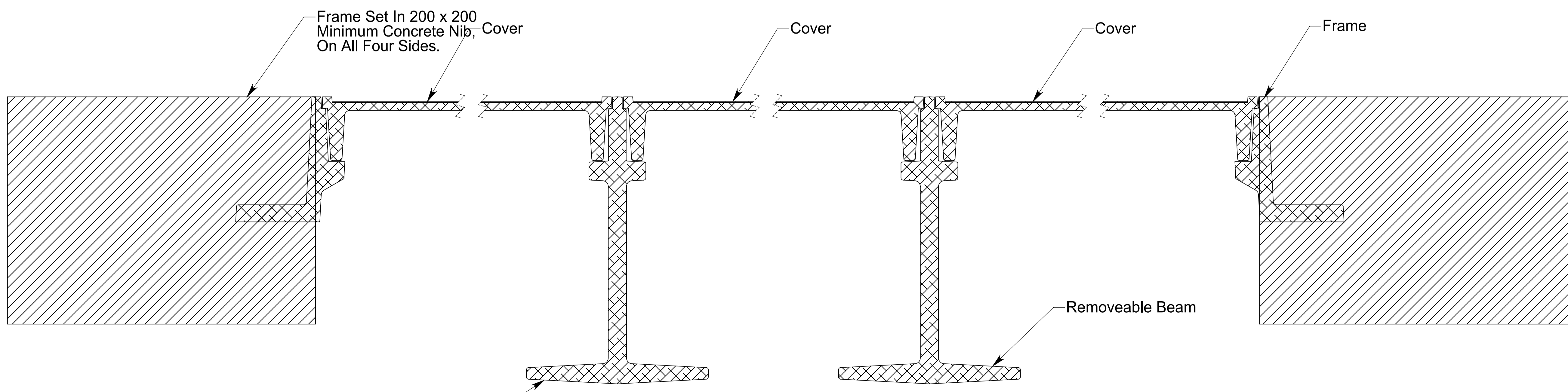
Issue:	Issued By:	Chkd By:	Appvd By:	Date:
A	DH			01-03-03
Released For Manufacture				
B	db			29-05-12
Recorded, Was D-31812-01				
C	db			09-07-14
Updated To As Built				



**Cover Set In Ground,
Set In Concrete Nib & Asphalt**



Typical Cover Bolting Down Section C-C



Typical Installation Section B-B

Refer Sika Installation Guide

CLIENT
•

PROJECT:
**Aluminium Security
Access Cover Set
Bolted 1800 x 1200**

To Class D210kN Loads
To AS 3996:2006

TITLE:
**Bolted Cover Set
1800 x 1200 Solid Top**



PO Box 58-491, Greenmount
Auckland, New Zealand.
Phone: +64 +9 274 5929
Fax: +64 +9 273 9509
Email: info@sikatech.co.nz
Website: www.sikatech.co.nz

COPYRIGHT RESERVED ©
THIS INFORMATION IS HIGHLY CONFIDENTIAL
& IS THE EXCLUSIVE PROPERTY OF
SIKA TECHNOLOGY LIMITED.

Unless Specified:
All Dimensions In Millimeters
Drawn to AS 1100

Drawn By:	NL	Date:	01-03-03
Engineer:	GS	Date:	01-03-03
Checked By:		Date:	
Approved By:		Date:	
Drg Size:	A1	Sht:	2
SCALE At A1:	1:5	Of:	2
Drg No:	D210-303-1218-ST-A00		