

Issue:	Issued By:	Or No:	Appvd By:	Date:
A	NL			11-12-09

Released

CLIENT
.

PROJECT:
**Alum Jointing Chamber
2600L x 600W x 700H**

**To Class D210kN Loads
To AS 3996 : 2006**

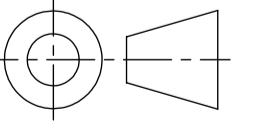
TITLE:
**Chamber 2600 x 600 x
700**



10 Blackburn Rd, East Tamaki
PO Box 58-491, Greenmount
Auckland, New Zealand.
Phone: +64 +9 274 5929
Fax: +64 +9 273 9509
Email: info@sikatech.co.nz
Website: www.sikatech.co.nz
COPYRIGHT RESERVED ©

THIS INFORMATION IS HIGHLY CONFIDENTIAL
& IS THE EXCLUSIVE PROPERTY OF
SIKA TECHNOLOGY LIMITED.

Unless Specified:
All Dimensions In Millimeters
Drawn to AS 1100



Drawn By:	N Lush	Date:	11-12-09
Engineer:	D Hill	Date:	11-12-09
Checked By:		Date:	
Approved By:		Date:	

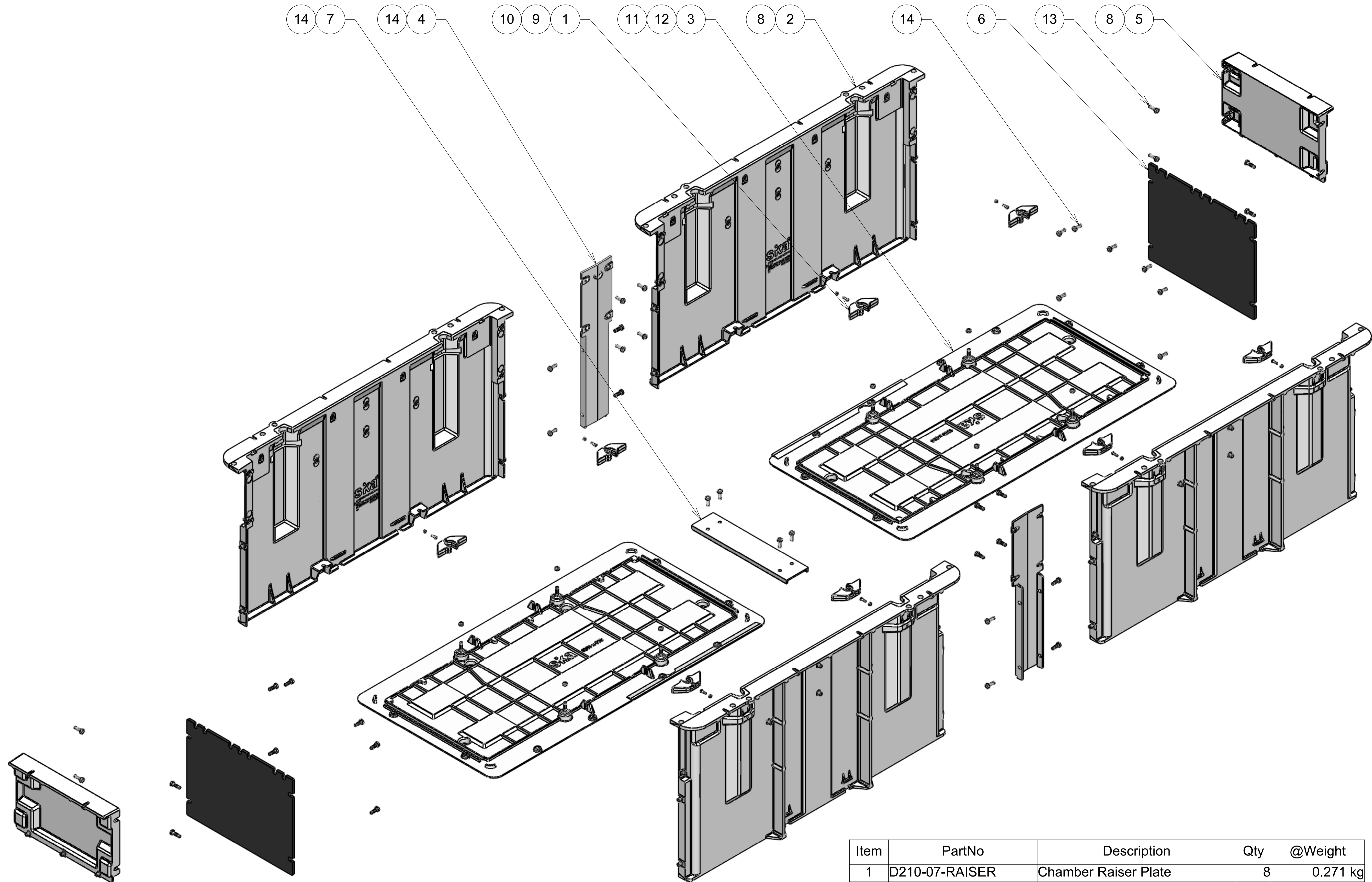
Drg Size: A1 Sht: 1 Iss:
SCALE At A1: 1:10 Of: 3 A

Drg No:
D210-07-260607-A00

Refer the Following 3D Cad File for Visual Reference:
D210-07-260607-A00 - Iss A - D210kN Chamber 2600 x 600 x 700.EASM

Total Mass = 146.3 kg

Refer Sika Installation Guide



Exploded View
Total Mass = 146.3 kg

Item	PartNo	Description	Qty	@Weight
1	D210-07-RAISER	Chamber Raiser Plate	8	0.271 kg
2	D210-07-1207-SIDE	Chamber 1200L x 700H Side	4	20.59 kg
3	D210-07-1206-BASE	Chamber 1200L x 600W Base	2	17.09 kg
4	D210-07-07-SJ	Chamber 700 Side Joiner	2	2.010 kg
5	D210-07-0607-END	Chamber 600W x 700H End	2	7.743 Kg
6	D210-07-06-CPDEP	Polyprop Duct Entry Panel	2	2.210 kg
7	D210-07-06-BJ	Chamber 600 Base Joiner	1	1.021 kg
8		RivNut St-St M10	70	0.019 Kg
9		Bolt St-St M6 x 20 Long	8	0.007 kg
10		Nut St-St M6	8	0.003 kg
11		Nut St-St M10	12	0.008 kg
12		Bolt St-St M10 x 45 Long	8	0.038 kg
13		Bolt St-St M10 x 35 Long	8	0.032 kg
14		Bolt St-St M10 x 30 Long	34	0.029 kg

Refer the Following 3D Cad File for Visual Reference:
D210-07-260607-A00 - Iss A - D210kN Chamber 2600 x 600 x 700.EASM

CLIENT
 .

PROJECT:
Alum Jointing Chamber
2600L x 600W x 700H

To Class D210kN Loads
To AS 3996 : 2006

TITLE:
Chamber 2600 x 600 x 700



10 Blackburn Rd, East Tamaki
 PO Box 58-491, Greenmount
 Auckland, New Zealand.
 Phone: +64 +9 274 5929
 Fax: +64 +9 273 9509
 Email: info@sikatech.co.nz
 Website: www.sikatech.co.nz
 COPYRIGHT RESERVED ©

THIS INFORMATION IS HIGHLY CONFIDENTIAL
 & IS THE EXCLUSIVE PROPERTY OF
 SIKA TECHNOLOGY LIMITED.

Unless Specified:
 All Dimensions In Millimeters
 Drawn to AS 1100

Drawn By:	N Lush	Date:	11-12-09
Engineer:	D Hill	Date:	11-12-09
Checked By:		Date:	
Approved By:		Date:	
Drg Size:	A1	Sht:	2
SCALE At A1:	1:10	Of:	3
Iss:			A

D210-07-260607-A00

Refer the Following 3D Cad File for Visual Reference:
D210-07-260607-A00 - Iss A - D210kN Chamber 2600 x 600 x 700.EASM

Issue:	Issued By:	Or No:	Appvd By:	Date:
A	NL			11-12-09

Released

CLIENT
 .

PROJECT:
**Alum Jointing Chamber
 2600L x 600W x 700H**

**To Class D210kN Loads
 To AS 3996 : 2006**

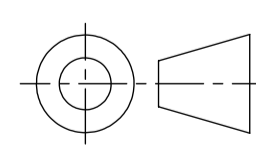
TITLE:
**Chamber 2600 x 600 x
 700**



10 Blackburn Rd, East Tamaki
 PO Box 58-491, Greenmount
 Auckland, New Zealand.
 Phone: +64 +9 274 5929
 Fax: +64 +9 273 9509
 Email: info@sikatech.co.nz
 Website: www.sikatech.co.nz

COPYRIGHT RESERVED ©
 THIS INFORMATION IS HIGHLY CONFIDENTIAL
 & IS THE EXCLUSIVE PROPERTY OF
 SIKA TECHNOLOGY LIMITED.

Unless Specified:
 All Dimensions In Millimeters
 Drawn to AS 1100



Drawn By:	N Lush	Date:	11-12-09
Engineer:	D Hill	Date:	11-12-09
Checked By:		Date:	
Approved By:		Date:	

Drg Size: A1 Sht: **3** Iss:
 SCALE At A1: 1:10 Of: **3** **A**

Drg No:
D210-07-260607-A00

