

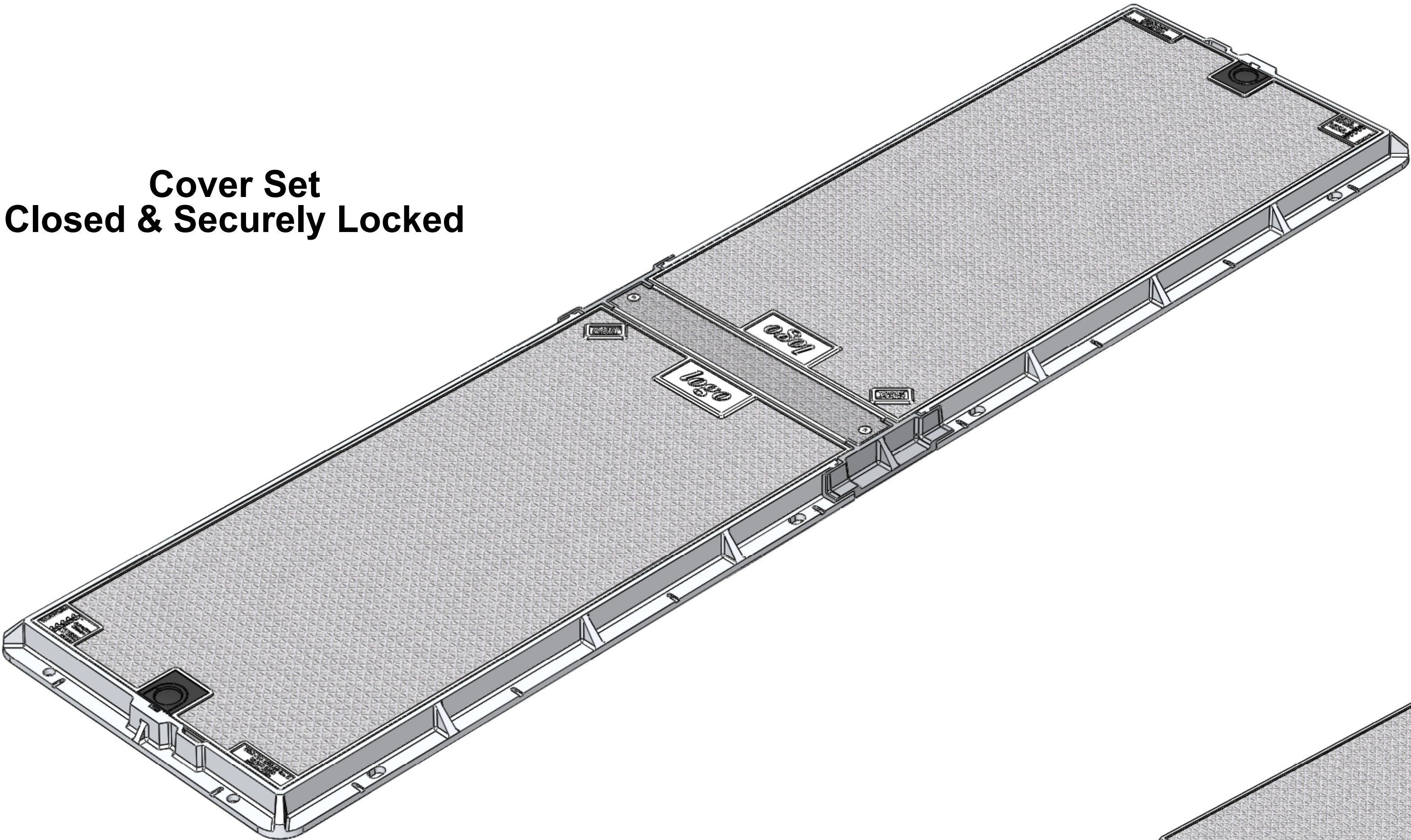
Section A-A

Refer the Following 3D Cad File for Visual Reference:  
**B080-403-2606-ST-A00 - Iss B - B080kN Lock Block Cover Set 2600 x 600 Solid Top . EASM**

**Refer To Sika Installation Guide**

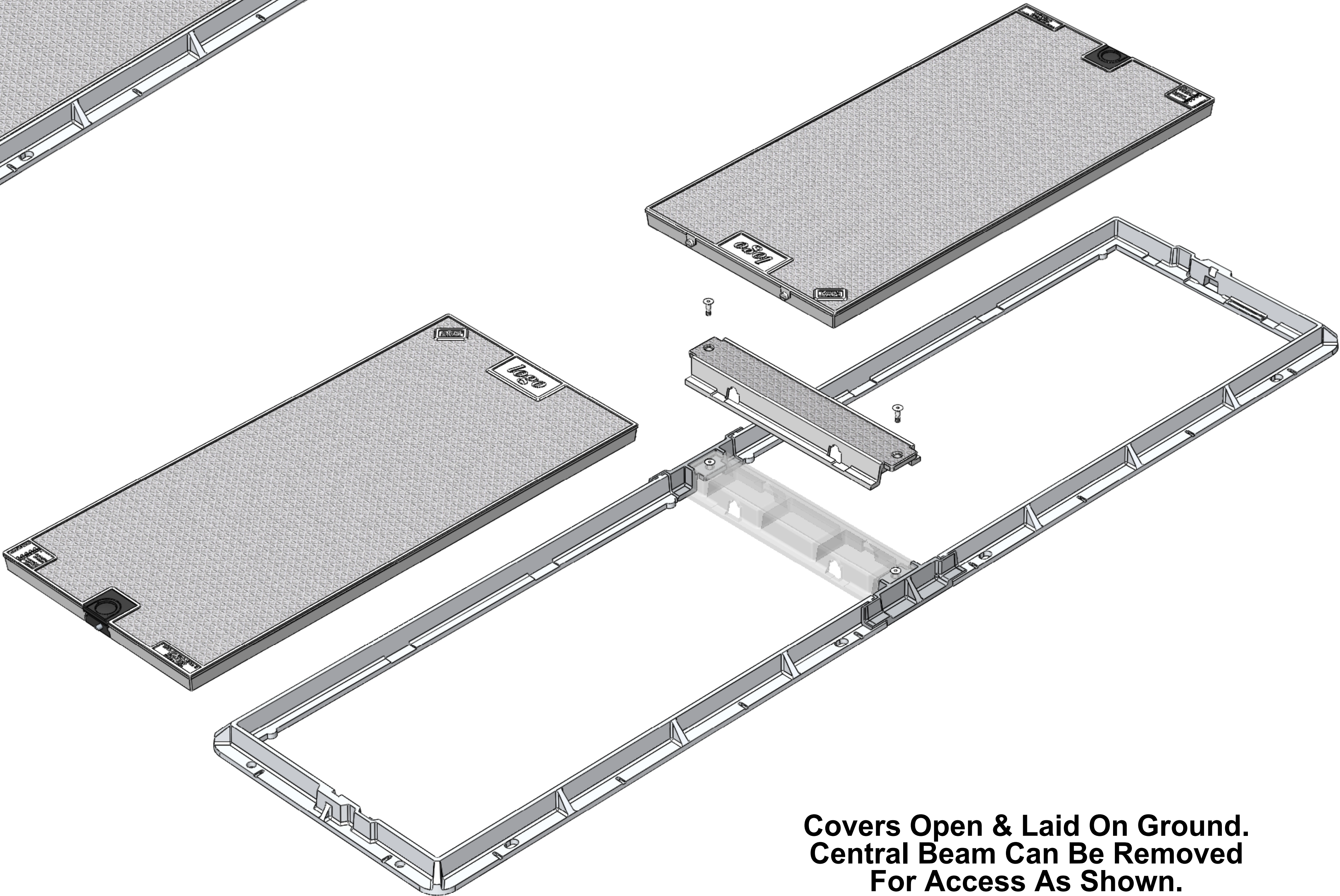
Issue:	Issued By:	Or No:	Appvd By:	Date:
A	NL			07-07-09
Released For Information				
B	db			17-08-21
Reviewed and Updated				
CLIENT				
PROJECT:				
Aluminium Security Access Cover Set 2600 x 600				
To Class B080kN Loads To AS 3996 : 2006				
TITLE:				
Lock Block Cover Set 2600 x 600 Solid Top				
<div><div><div>sika®</div><div>PO Box 58-491, Greenmount Auckland, New Zealand. Phone: +64 09 274 5929 Fax: +64 09 273 9509 Email: info@sikatech.co.nz Website: www.sikatech.co.nz</div><div>COPYRIGHT RESERVED ©</div><div>THIS INFORMATION IS HIGHLY CONFIDENTIAL &amp; IS THE EXCLUSIVE PROPERTY OF SIKA TECHNOLOGY LIMITED.</div></div><div>Unless Specified: All Dimensions In Millimeters Drawn to AS 1100</div><div><div><div><div>Drawn By:</div><div>N Lush</div><div>Date:</div><div>07-07-09</div></div><div><div>Engineer:</div><div>D Hill</div><div>Date:</div><div>07-07-09</div></div><div><div>Checked By:</div><div></div><div>Date:</div><div></div></div><div><div>Approved By:</div><div></div><div>Date:</div><div></div></div></div><div><div>Drg Size: A1</div><div>Sht: 1</div><div>Iss:</div></div><div><div>SCALE At A1: 1:5</div><div>Of: 3</div><div>B</div></div><div><div>Drg No:</div><div>B080-403-2606-ST-A00</div></div></div></div>				





Cover Set  
Closed & Securely Locked

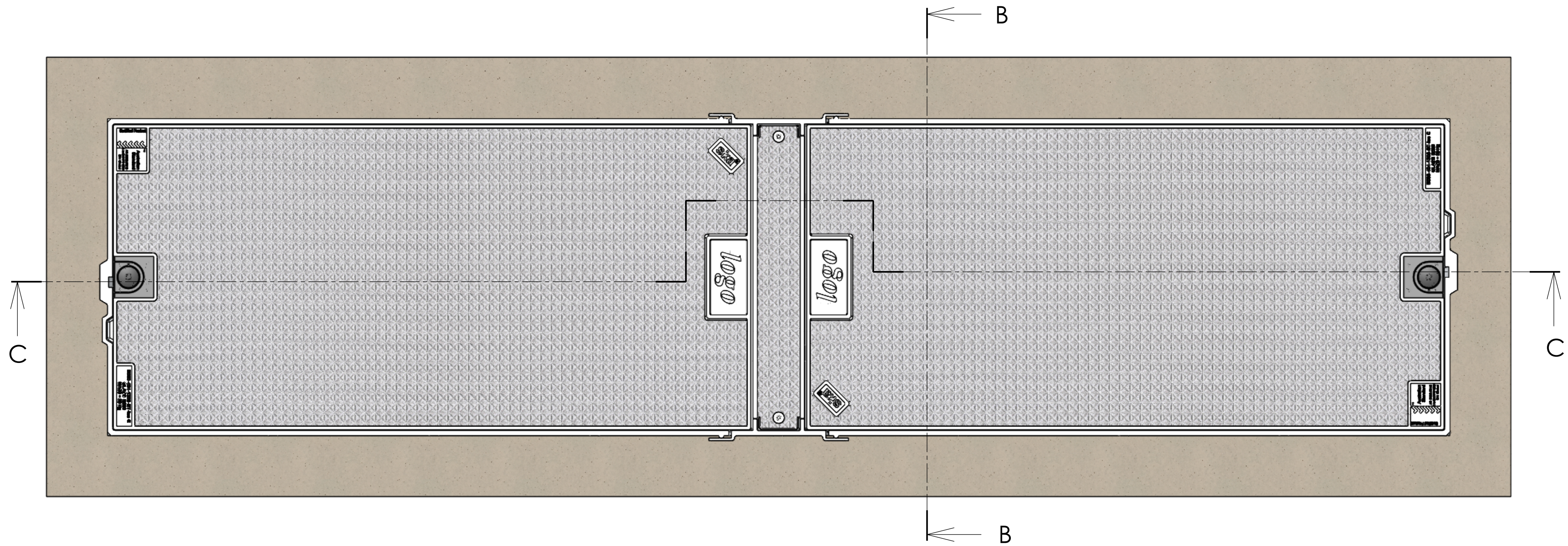
Masses:  
1200 x 600 Cover = 30 kg x2  
2600 x 600 Frame = 29 kg  
Beam = 4 kg  
Total = 93 kg



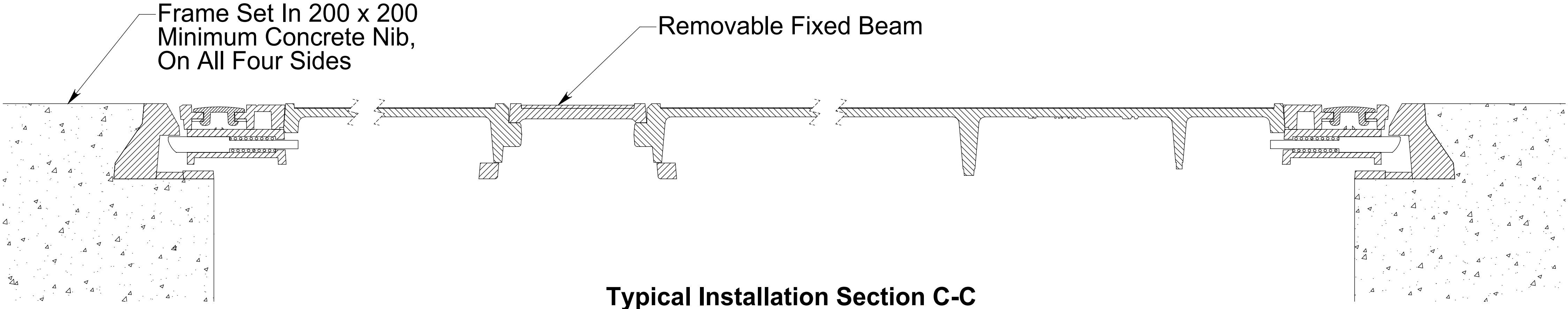
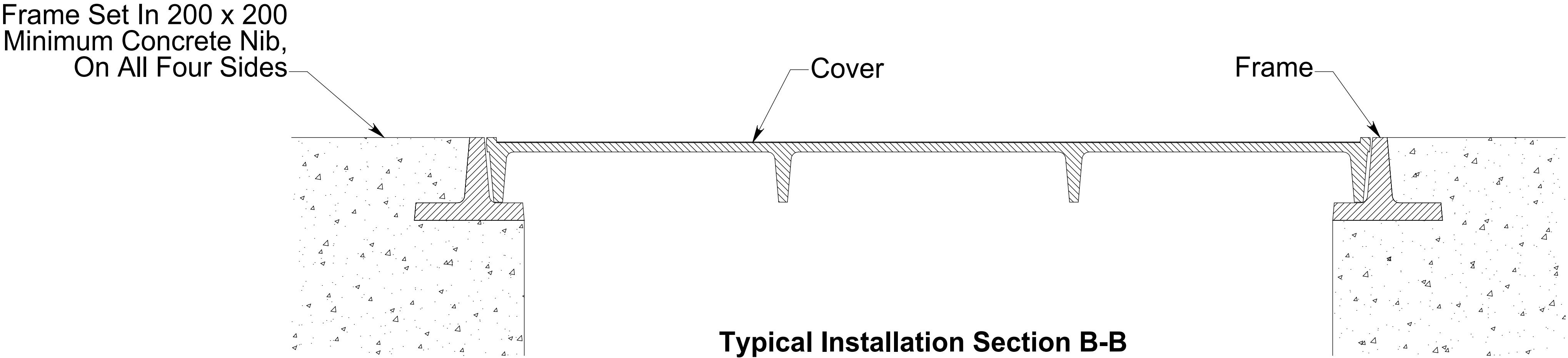
Covers Open & Laid On Ground.  
Central Beam Can Be Removed  
For Access As Shown.

Issue:	Issued By:	Or No:	Appvd By:	Date:
A	NL			07-07-09
Released For Information				
B	db			17-08-21
Reviewed and Updated				
CLIENT				
PROJECT:				
Aluminium Security Access Cover Set 2600 x 600				
To Class B080kN Loads To AS 3996 : 2006				
TITLE:				
Lock Block Cover Set 2600 x 600 Solid Top				
<div><div>sika<sup>®</sup></div><div>PO Box 58-491, Greenmount Auckland, New Zealand. Phone: +64 09 274 5929 Fax: +64 09 273 9509 Email: info@sikatech.co.nz Website: www.sikatech.co.nz COPYRIGHT RESERVED © THIS INFORMATION IS HIGHLY CONFIDENTIAL &amp; IS THE EXCLUSIVE PROPERTY OF SIKA TECHNOLOGY LIMITED.</div></div>				
Unless Specified: All Dimensions In Millimeters Drawn to AS 1100				
Drawn By:	N Lush	Date:	07-07-09	
Engineer:	D Hill	Date:	07-07-09	
Checked By:		Date:		
Approved By:		Date:		
Drq Size:	A1	Sht:	2	Iss:
SCALE At A1:	1:5	Of:	3	B
Drq No: B080-403-2606-ST-A00				





Cover Set In Ground  
Set In Concrete Nib



Refer To Sika Installation Guide

Issue:	Issued By:	Or No:	Appvd By:	Date:
A	NL			07-07-09
Released For Information				
B	db			17-08-21
Reviewed and Updated				
CLIENT				
PROJECT:				
Aluminium Security Access Cover Set 2600 x 600				
To Class B080kN Loads To AS 3996 : 2006				
TITLE:				
Lock Block Cover Set 2600 x 600 Solid Top				
 PO Box 58-491, Greenmount Auckland, New Zealand. Phone: +64 09 274 5929 Fax: +64 09 273 9509 Email: info@sikatech.co.nz Website: www.sikatech.co.nz COPYRIGHT RESERVED © THIS INFORMATION IS HIGHLY CONFIDENTIAL & IS THE EXCLUSIVE PROPERTY OF SIKA TECHNOLOGY LIMITED.				
Unless Specified: All Dimensions In Millimeters Drawn to AS 1100				
Drawn By:	N Lush	Date:	07-07-09	
Engineer:	D Hill	Date:	07-07-09	
Checked By:		Date:		
Approved By:		Date:		
Drg Size:	A1	Sht:	3	Iss:
SCALE At A1:	1:5	Of:	3	B
Drg No: B080-403-2606-ST-A00				