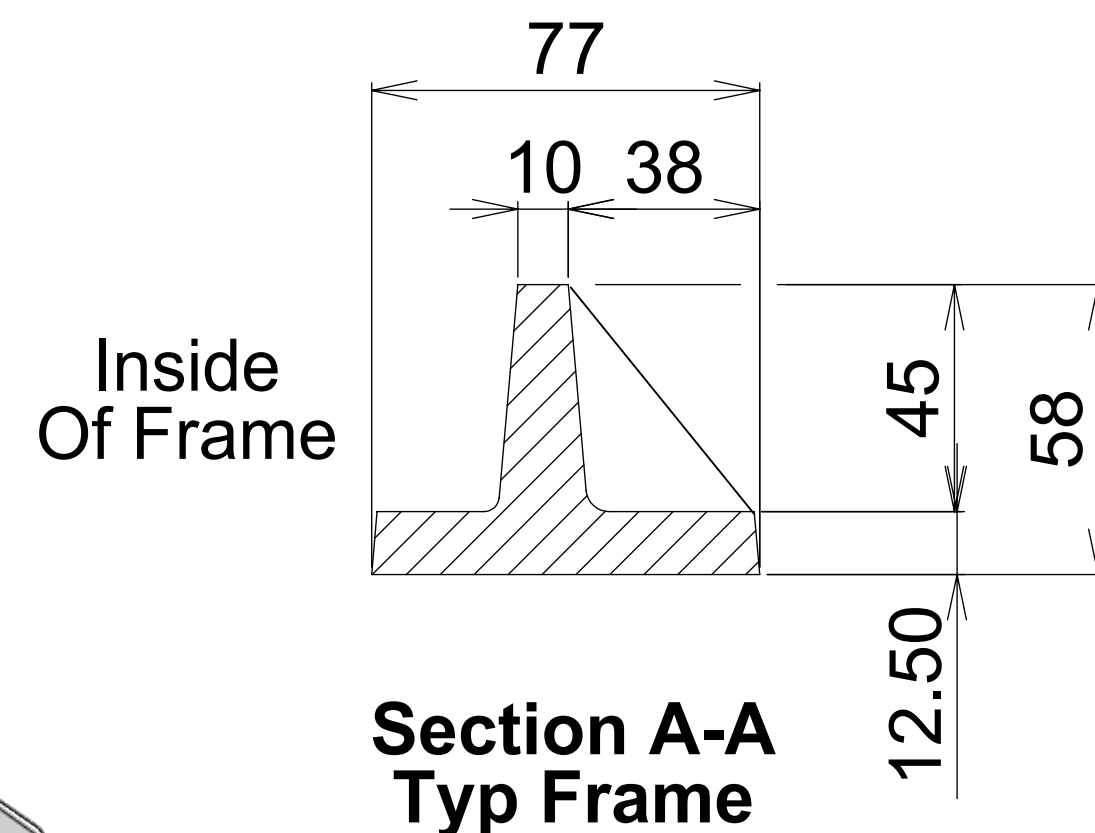


Frame

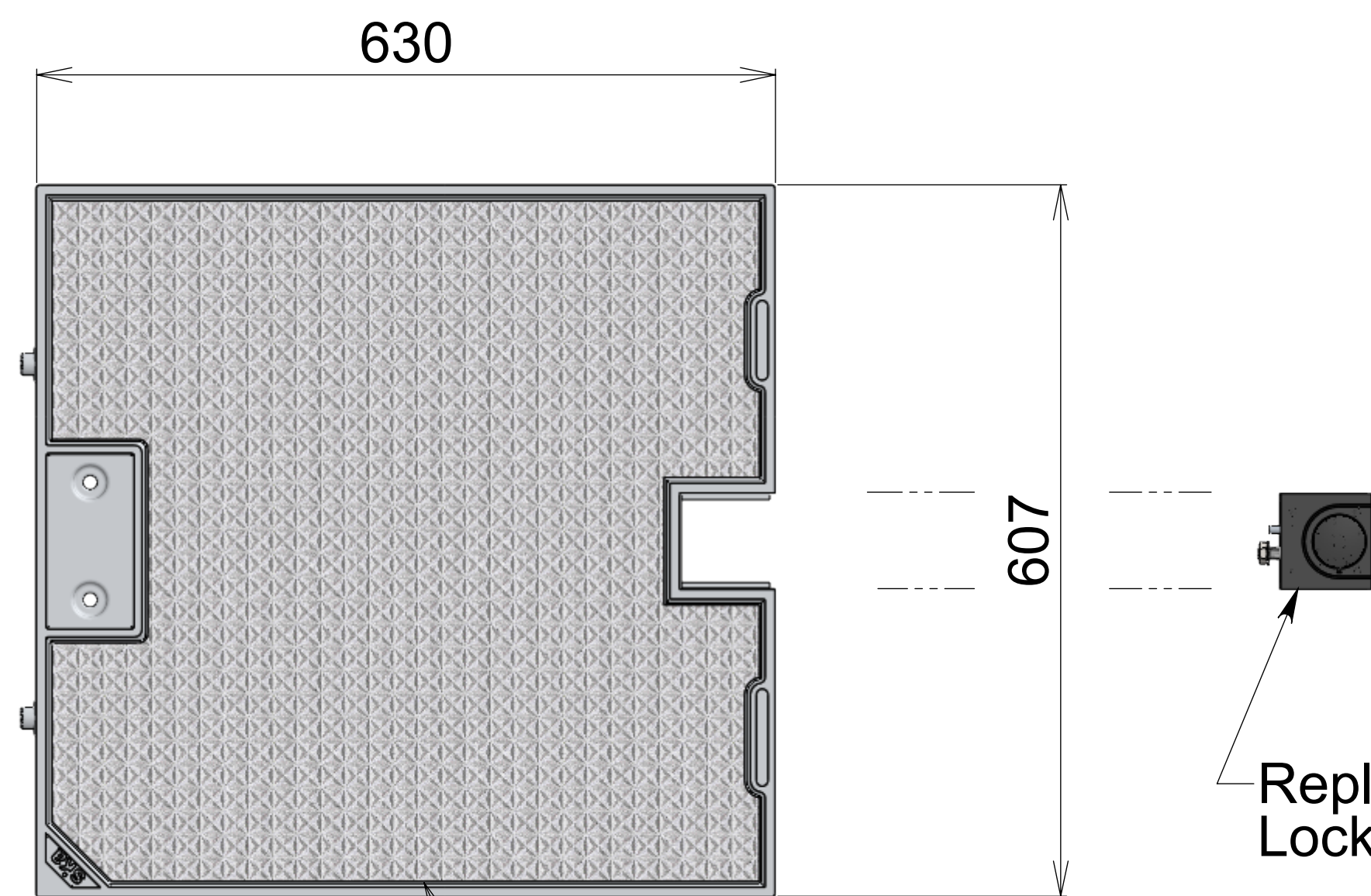
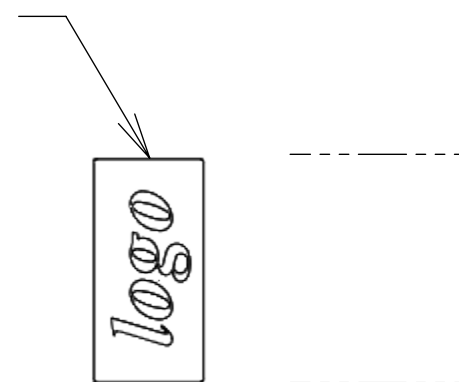
Cover Closed & Locked



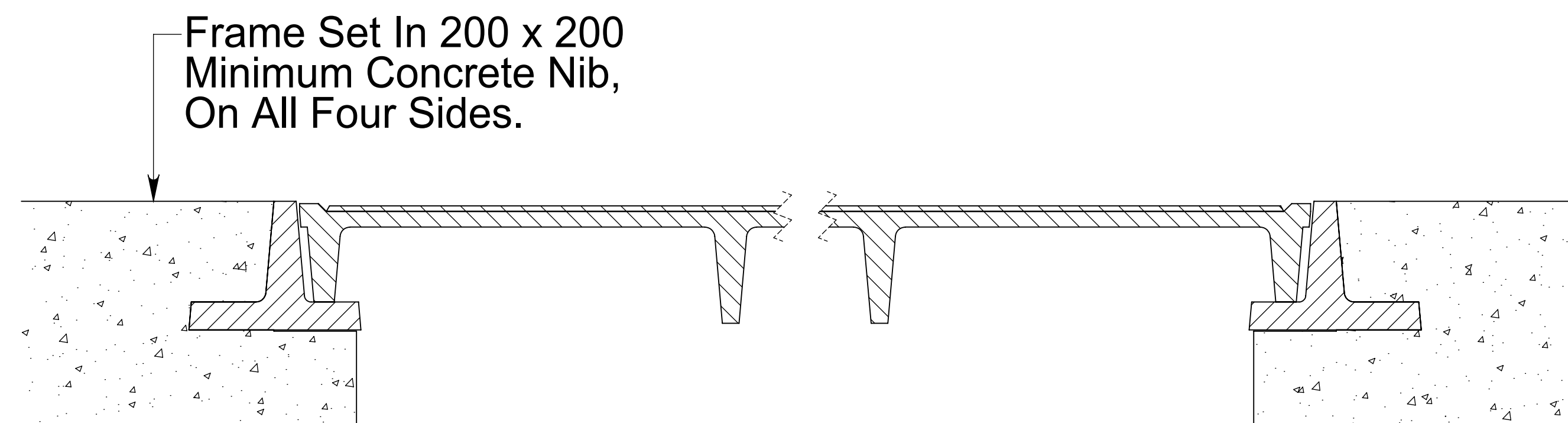
Masses:
Frame 11 Kg
Cover Assy 16 Kg

Cover Open & Laid On Ground

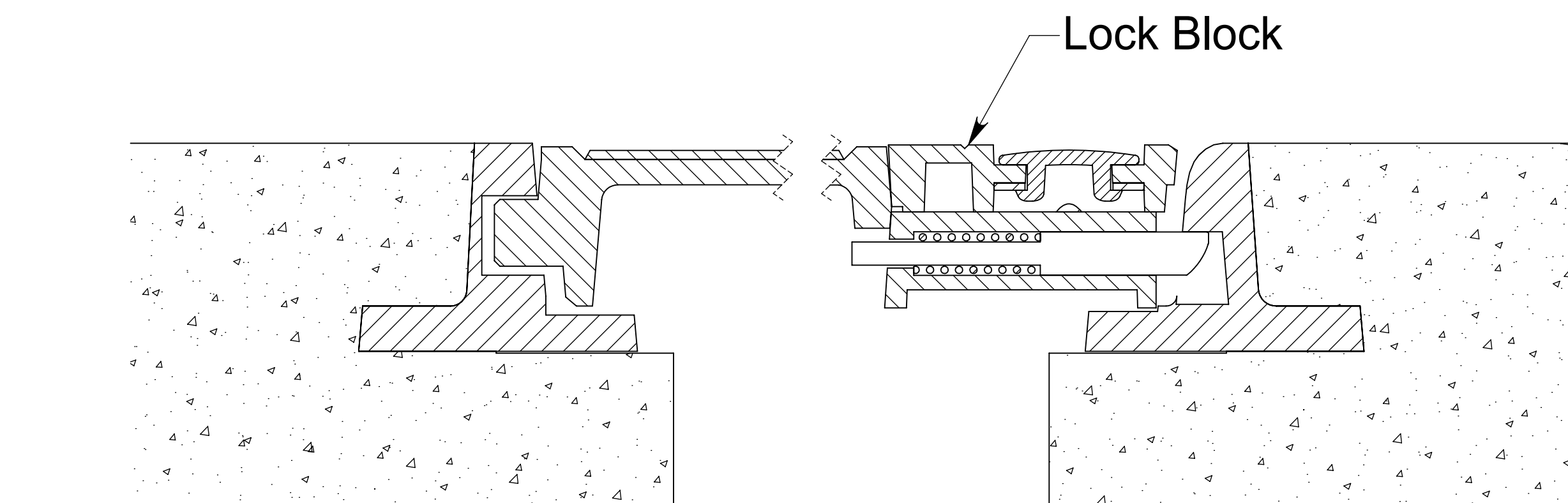
Embossed Logo
To Suit Client's
Requirements



Cover Assy



Typical Installation Section



Typical Installation Section

Frame Set In 200 x 200
Minimum Concrete Nib,
On All Four Sides.

Refer To Sika Installation Guide

Issue:	Issued By:	Or No:	Appvd By:	Date:
A	GS	.	.	01-01-02
Released For Catalogue				
B	GS	.	.	01-03-03
Title Change				
C	NL	.	.	18-06-09
Remodeled for QA Report Code Changed: was B-3606-01				
D	db	.	.	17-08-21
Reviewed and Updated				

CLIENT

PROJECT:
**Aluminium Security
Access Cover Set
600 x 600**

**To Class B080kN Loads
To AS 3996 : 2006**

TITLE:
**Lock Block Cover Set
600 x 600 Solid Top**

sika[®]

PO Box 58-491, Greenmount
Auckland, New Zealand.
Phone: +64 09 274 5929
Fax: +64 09 273 9509
Email: info@sikatech.co.nz
Website: www.sikatech.co.nz

COPYRIGHT RESERVED ©

THIS INFORMATION IS HIGHLY CONFIDENTIAL
& IS THE EXCLUSIVE PROPERTY OF
SIKA TECHNOLOGY LIMITED.

Unless Specified:
All Dimensions In Millimeters
Drawn to AS 1100

Drawn By:	N Lush	Date:	10-05-01
Engineer:	G Spain	Date:	10-05-01
Checked By:		Date:	
Approved By:		Date:	
Drg Size:	A1	Sht:	1
SCALE At A1:	NTS	Of:	1
Drg No:	B080-403-0606-ST-A00		