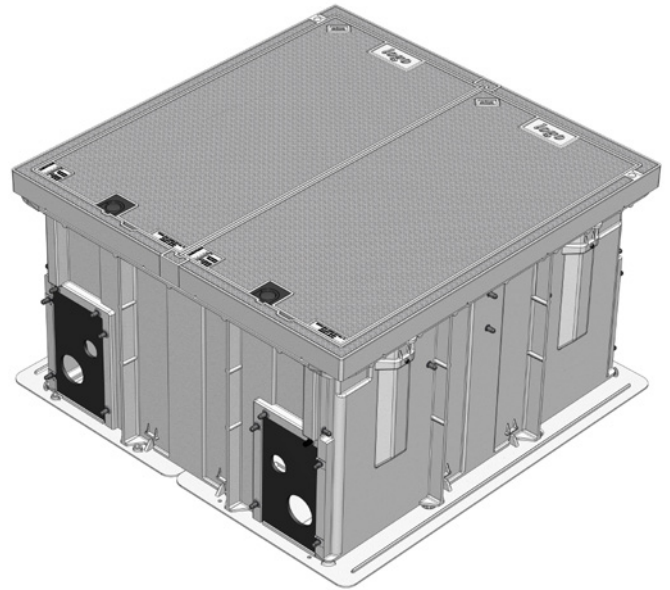
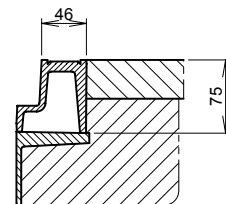
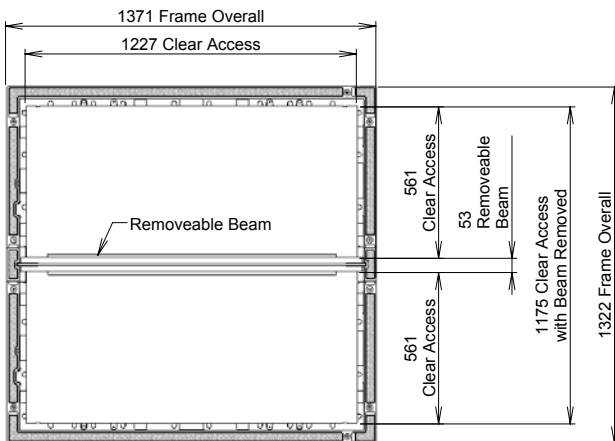


## CLASS B CHAMBER AND COVER SET PACKAGE 1200 X 1200 X 700H

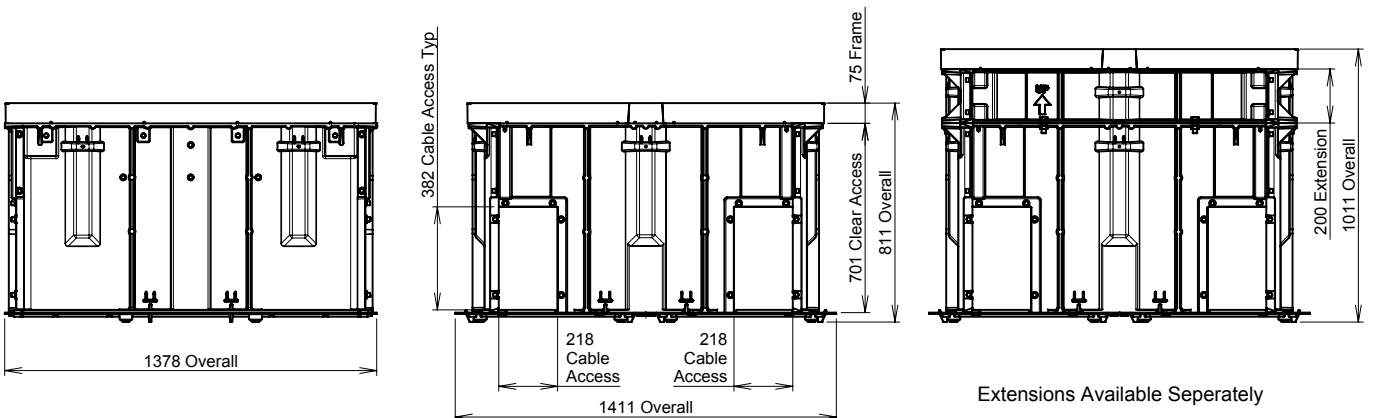
<b>Dimensions:</b>	1200 X 1200 x 700
<b>Standard:</b>	AS 3996-2006
<b>Design Load:</b>	Class B80kN
<b>Weight:</b>	Covers 30 kg ea Frame 20 kg Beam 10 kg; Chamber 111 kg
<b>Security:</b>	Lock Block, Key Lifter Required for Operation
<b>Product Code:</b>	B080 4C08 1212 ST



<b>1200</b> LONG	<b>1200</b> WIDE	<b>700</b> HIGH	<b>AS</b>	<b>CLASS B</b>	<b>80</b> kN
---------------------	---------------------	--------------------	-----------	----------------	-----------------



Typical Installation  
Frame Supported by  
Chamber / Extension Flange



Extensions Available Separately