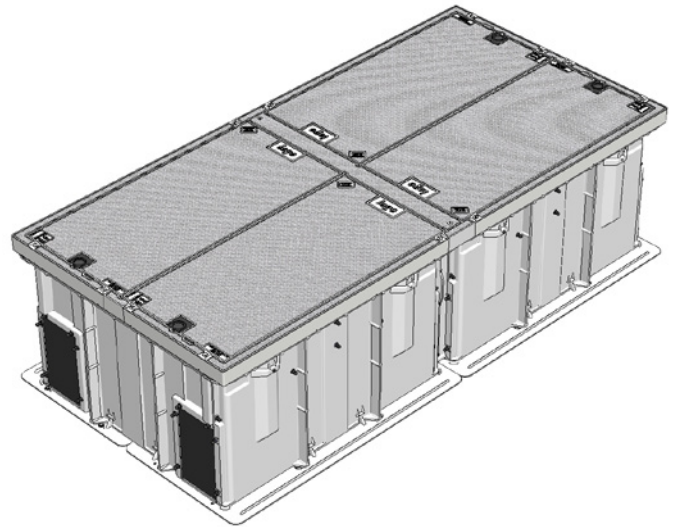
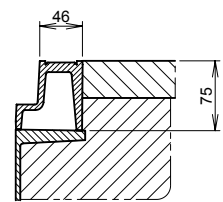
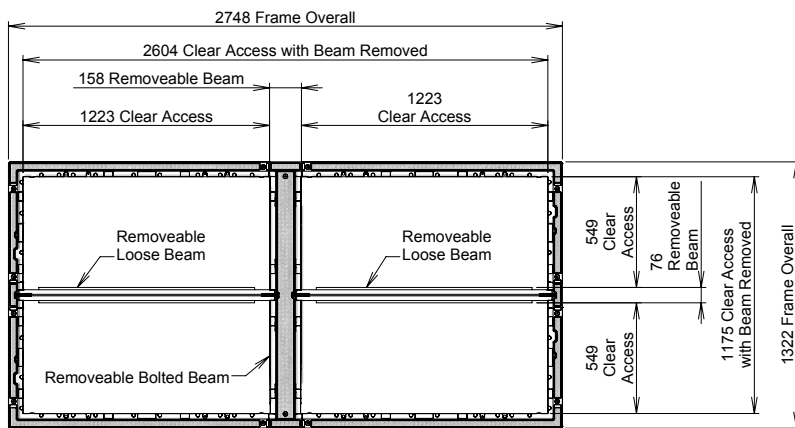


CLASS B CHAMBER AND COVER SET PACKAGE 2600 X 1200 X 700H

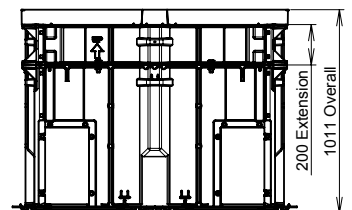
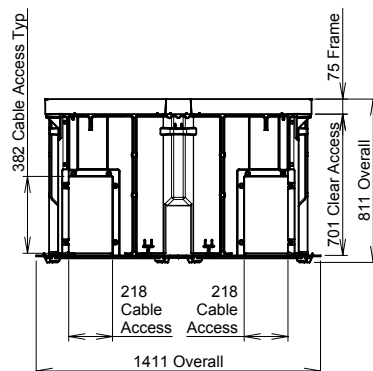
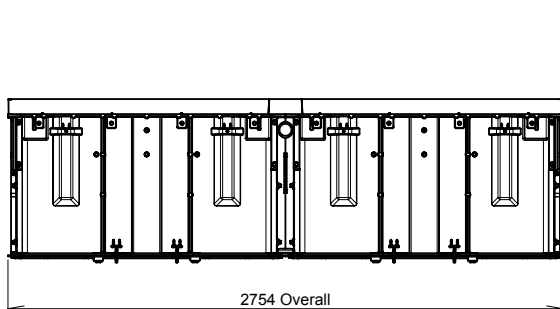
Dimensions: 2600 X 1200 x 700
Standard: AS 3996-2006
Design Load: Class B80kN
Weight: Covers 30 kg ea Frame
 32 kg Beams 20 kg, 17 kg; Chamber 200 kg
Security: Lock Block, Key Lifter
 Required for Operation
Product Code: B080 4C08 2612 STF



2600 LONG	1200 WIDE	700 HIGH		AS	CLASS B	80 kN
---------------------	---------------------	--------------------	--	-----------	---------	-----------------



Typical Installation
Frame Supported by
Chamber / Extension Flange



Extensions Available Separately