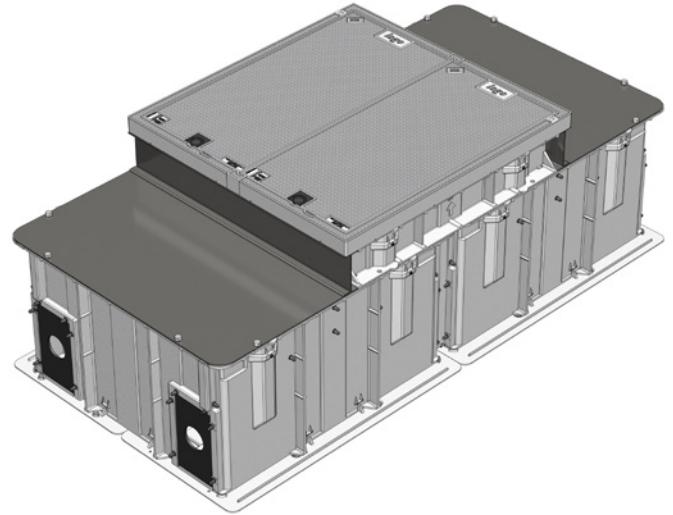
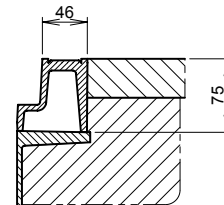
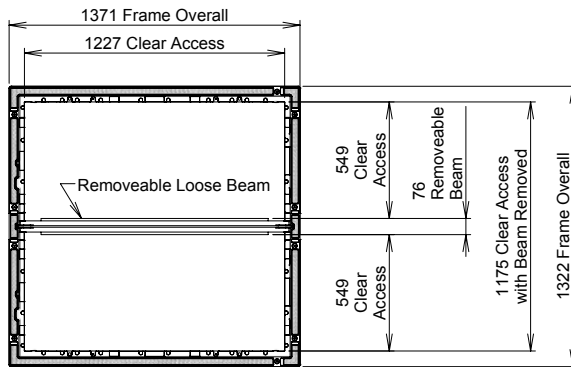


CLASS B CHAMBER AND COVER SET PACKAGE 2600 X 1200 X 700H PARTIAL ACCESS

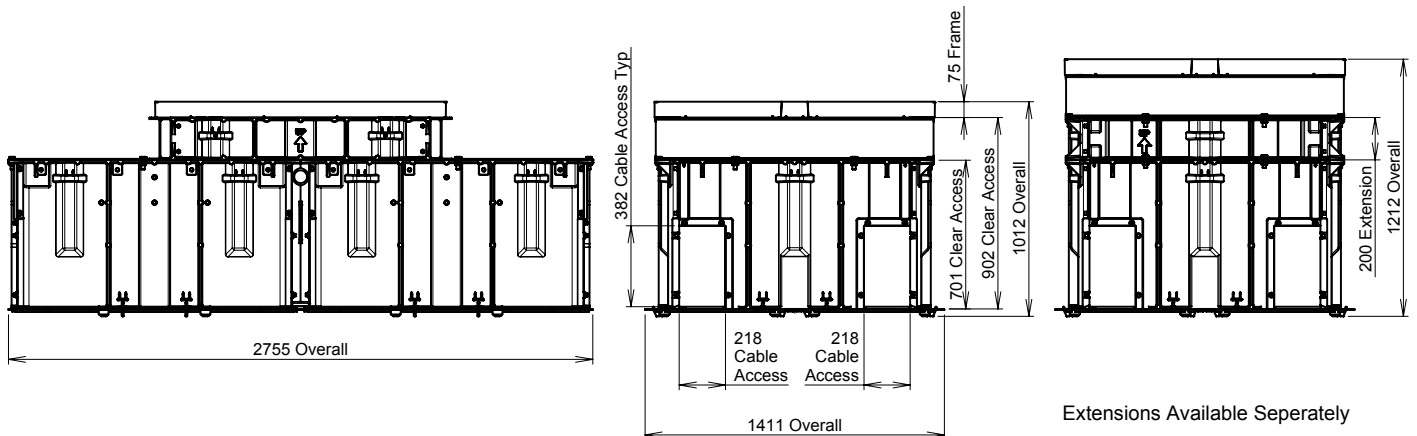
- Dimensions:** 2600 X 1200 x 700
- Standard:** AS 3996-2006
- Design Load:** Class B80kN
- Weight:** Covers 30 kg ea Frame 20 kg Beam 10 kg; Chamber 200 kg
- Security:** Lock Block, Key Lifter Required for Operation
- Product Code:** B080 4C08 2612 STP



2600 LONG	1200 WIDE	700 HIGH	AS	CLASS B	80 kN
---------------------	---------------------	--------------------	-----------	----------------	-----------------



Typical Installation
Frame Supported by
Chamber / Extension Flange



Extensions Available Separately