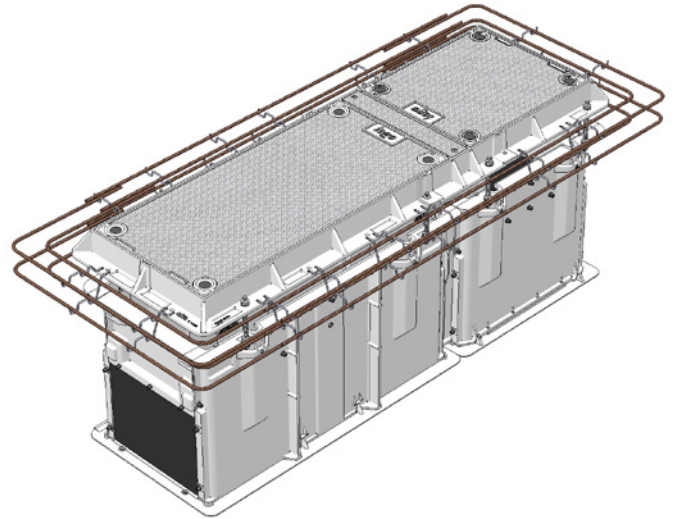
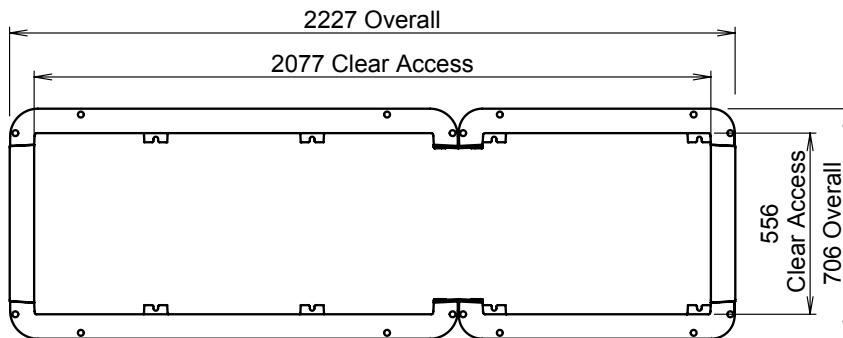


CLASS D CHAMBER AND COVER SET PACKAGE 2100 X 600 X 700H

Dimensions:	2100 X 600 x 700
Standard:	AS 3996-2006
Design Load:	Class D210kN
Weight:	Covers 40 kg, 25 kg; Frame 45 kg Beam 9 kg; Chamber 110 kg
Security:	Bolting Torque Coupling Req'd for Operation
Product Code:	D210 308 210607 ST

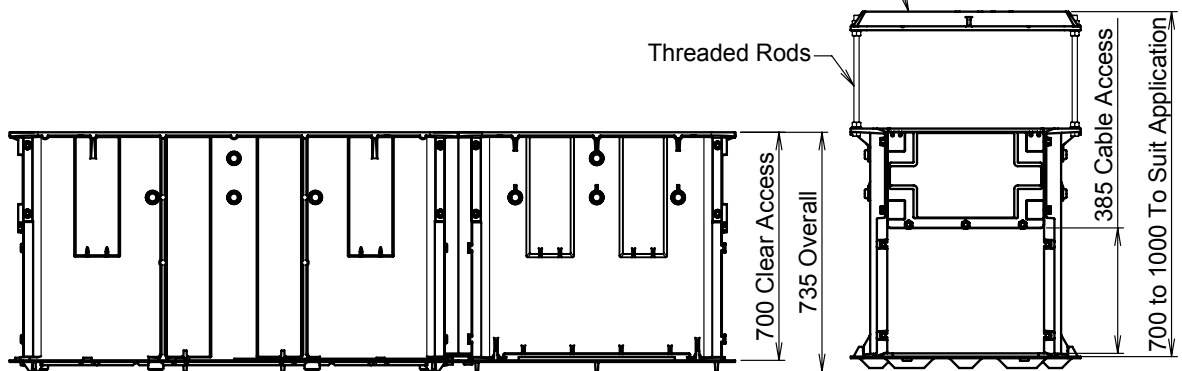


2100 LONG	600 WIDE	700 HIGH		AS	CLASS D	210 kN
---------------------	--------------------	--------------------	--	-----------	---------	------------------



Plan

Matching Cover Set Shown.
Easily Adjusted For
Height & Ground Slope,
Via Threaded Rods.



Side Elevation

End Elevation