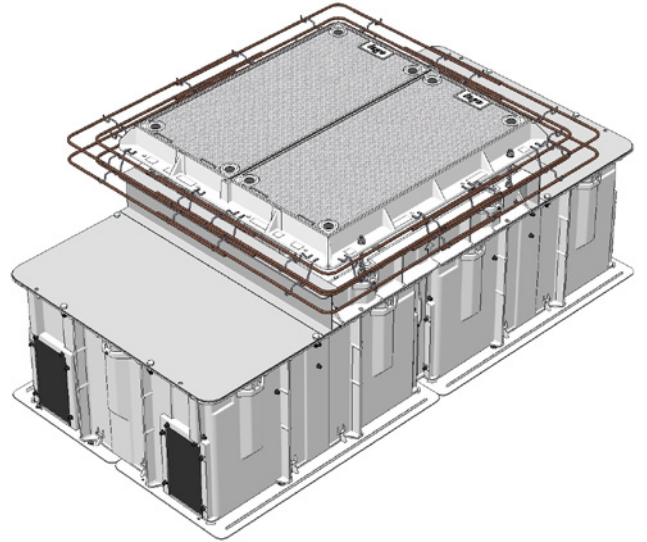
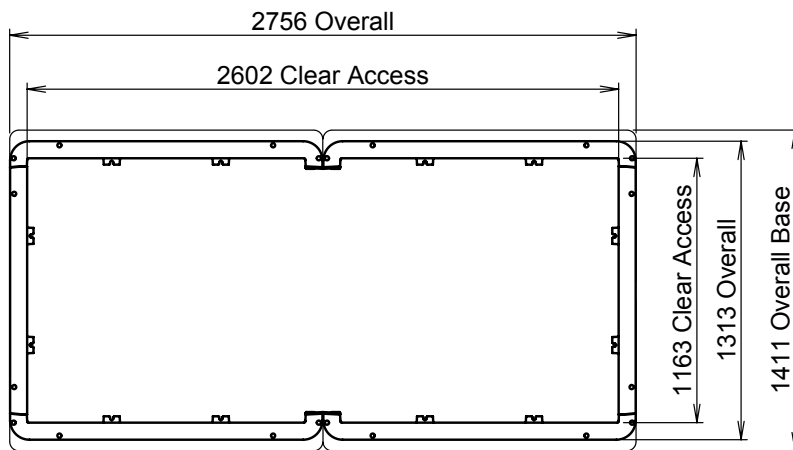


CLASS D CHAMBER AND COVER SET PACKAGE 2600 X 1200 X 700H

Dimensions:	2600 X 1200 x 700
Standard:	AS 3996-2006
Design Load:	Class D210kN
Weight:	Covers 40 kg ea Frame 39 kg Beam 22 kg; Chamber 200 kg
Security:	Bolting Torque Coupling Req'd for Operation
Product Code:	D210 308 261207 SP

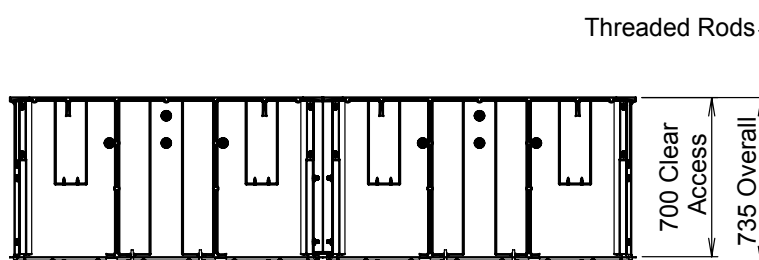


2600 LONG	1200 WIDE	700 HIGH	AS	CLASS D	210 KN
---------------------	---------------------	--------------------	-----------	----------------	------------------

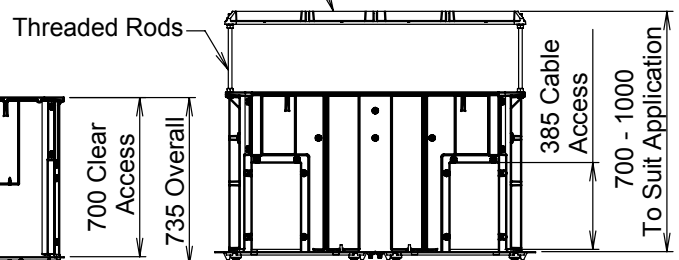


Plan

Matching Cover Set Shown.
Easily Adjusted For
Height & Ground Slope,
Via Threaded Rods.



Side Elevation



End Elevation