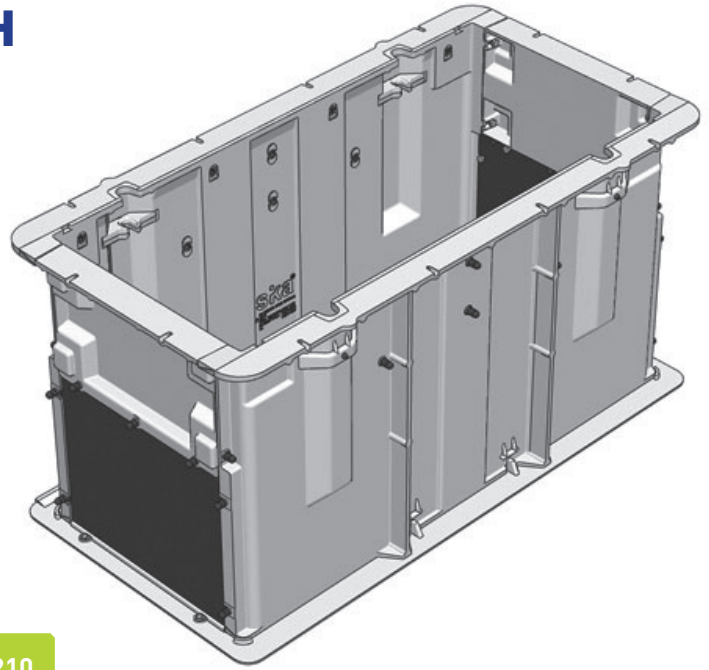


CHAMBER 1200 X 600 X 700H

Aluminium Sika Chambers are lightweight, strong and durable. Delivered flat-pack for convenient transportation and engineered for rapid installation in challenging locations. Get the hole cost advantage.

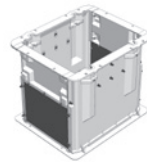
- Dimensions:** 1200 X 600 X 700
- Standard:** AS 3996-2006
- Design Load:** Class D 210kN
- Weight:** 71kg
- Heaviest Part:** 20kg
- Product Code:** D210-07-120607



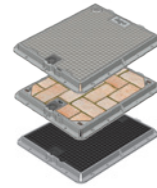
1200 LONG	600 WIDE	700 HIGH	71 KG	AS	CLASS D	210 kN
---------------------	--------------------	--------------------	-----------------	-----------	----------------	------------------

MAKE IT A PACKAGE

WITH SIKA COVER SETS



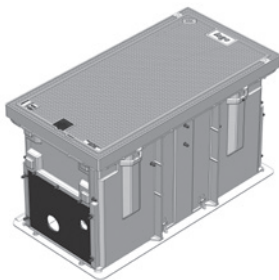
CHAMBER



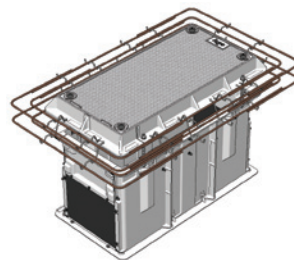
COVER SET



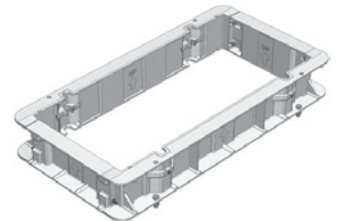
THE HOLE PACKAGE



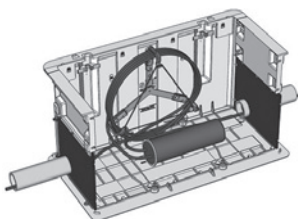
CLASS B CHAMBER AND COVER SET PACKAGE 1200 X 600 X 700H



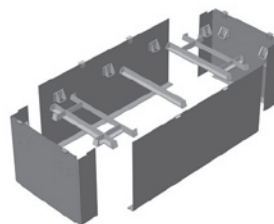
CLASS D CHAMBER AND COVER SET PACKAGE 1200 X 600 X 700H



CHAMBER EXTENSION



CABLE MANAGEMENT BRACKET



REUSABLE CHAMBER SHUTTERS

Visit our website for product details: sikatech.co.nz